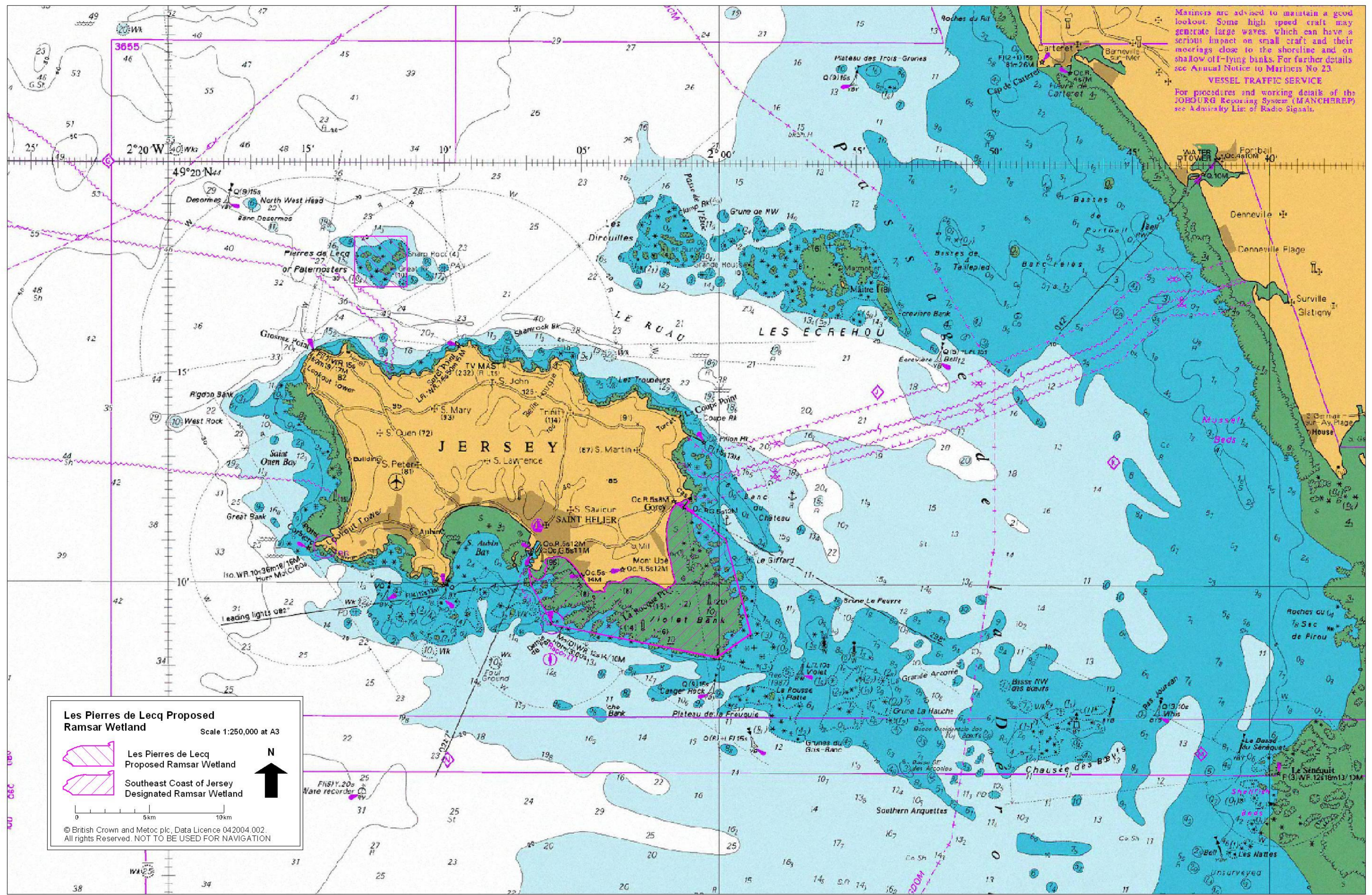




Mariners are advised to maintain a good lookout. Some high speed craft may generate large waves, which can have a serious impact on small craft and their moorings close to the shoreline and on shallow of-l-lying banks. For further details see Annual Notice to Mariners No 23.

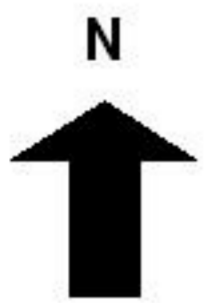
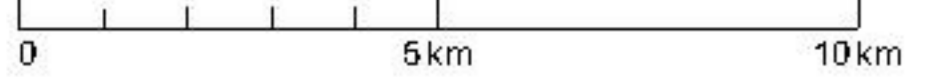
**VESSEL TRAFFIC SERVICE**

For procedures and working details of the JOBOURG Reporting System (MANCHREP) see Admiralty List of Radio Signals.



**Les Pierres de Lecq Proposed Ramsar Wetland**  
 Scale 1:250,000 at A3

 Les Pierres de Lecq Proposed Ramsar Wetland  
 Southeast Coast of Jersey Designated Ramsar Wetland

 N  
 0 5km 10km

© British Crown and Metoc plc, Data Licence 042004 002.  
 All rights Reserved. NOT TO BE USED FOR NAVIGATION