

THE SWALE (Phase 2) S.P.A./RAMSAR SITE KENT MAP 1

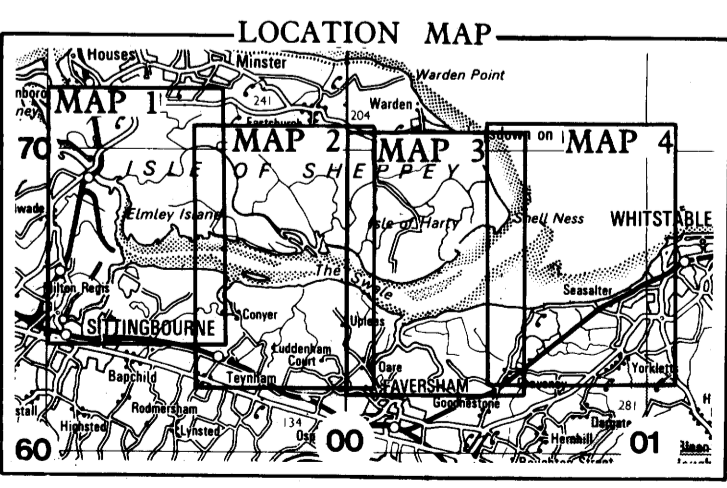
Nature Conservancy Council for England
 ENGLISH NATURE

S.P.A. / Ramsar Site boundary thus
 Land not previously included in designation 17.7.85

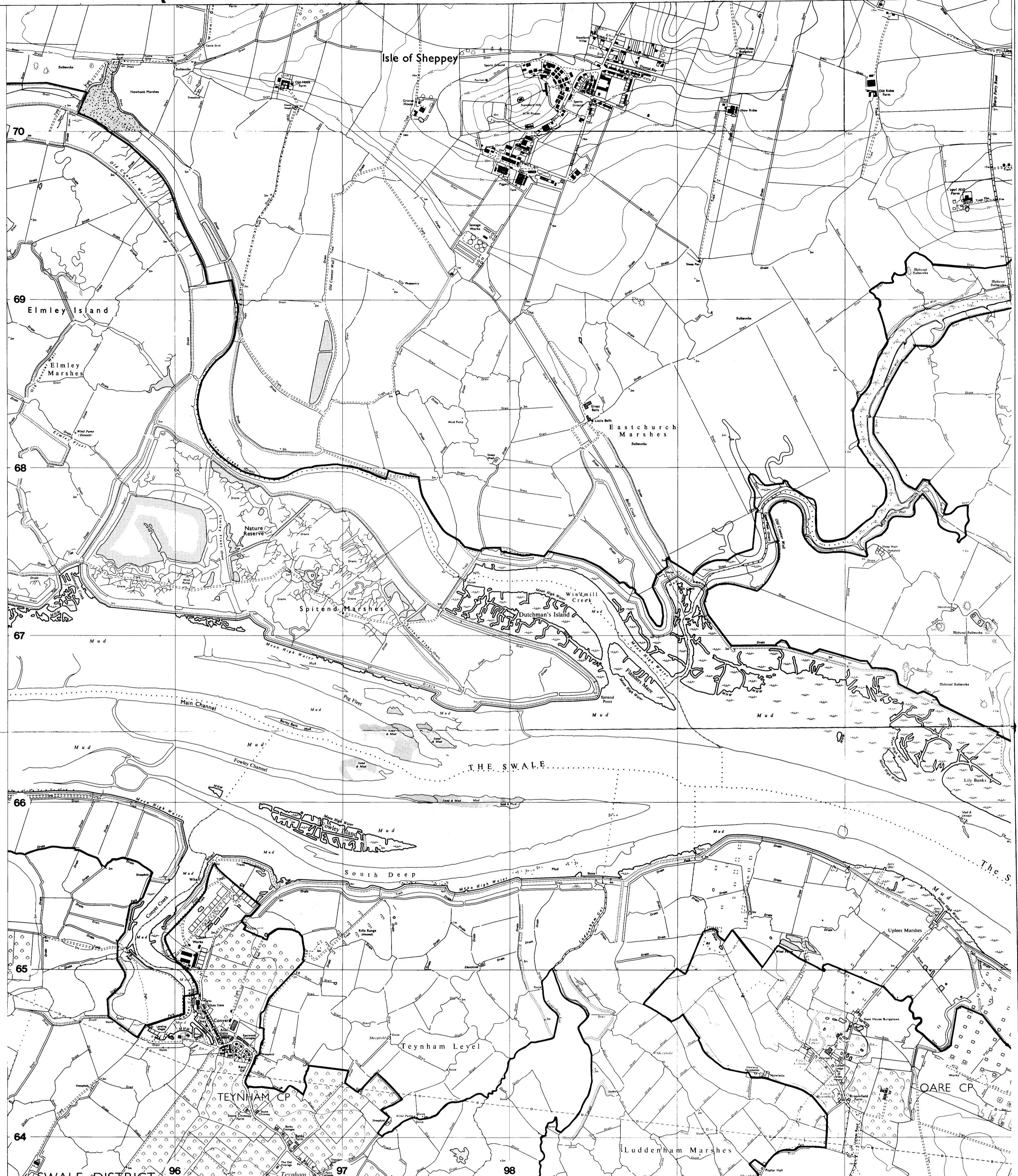
Scale 1:15 000 Designation date: 15-12-93

0 metres 500 1500

© English Nature



Note: Where the boundary follows a narrow water body such as a ditch or drain, it runs along the crest of the bank furthest from the bulk of the site, thus including the water and both banks.



THE SWALE (Phase 2) S.P.A./RAMSAR SITE KENT MAP 2

Note: Where the boundary follows a narrow water body such as a ditch or drain, it runs along the crest of the bank furthest from the bulk of the site, thus including the water and both banks.

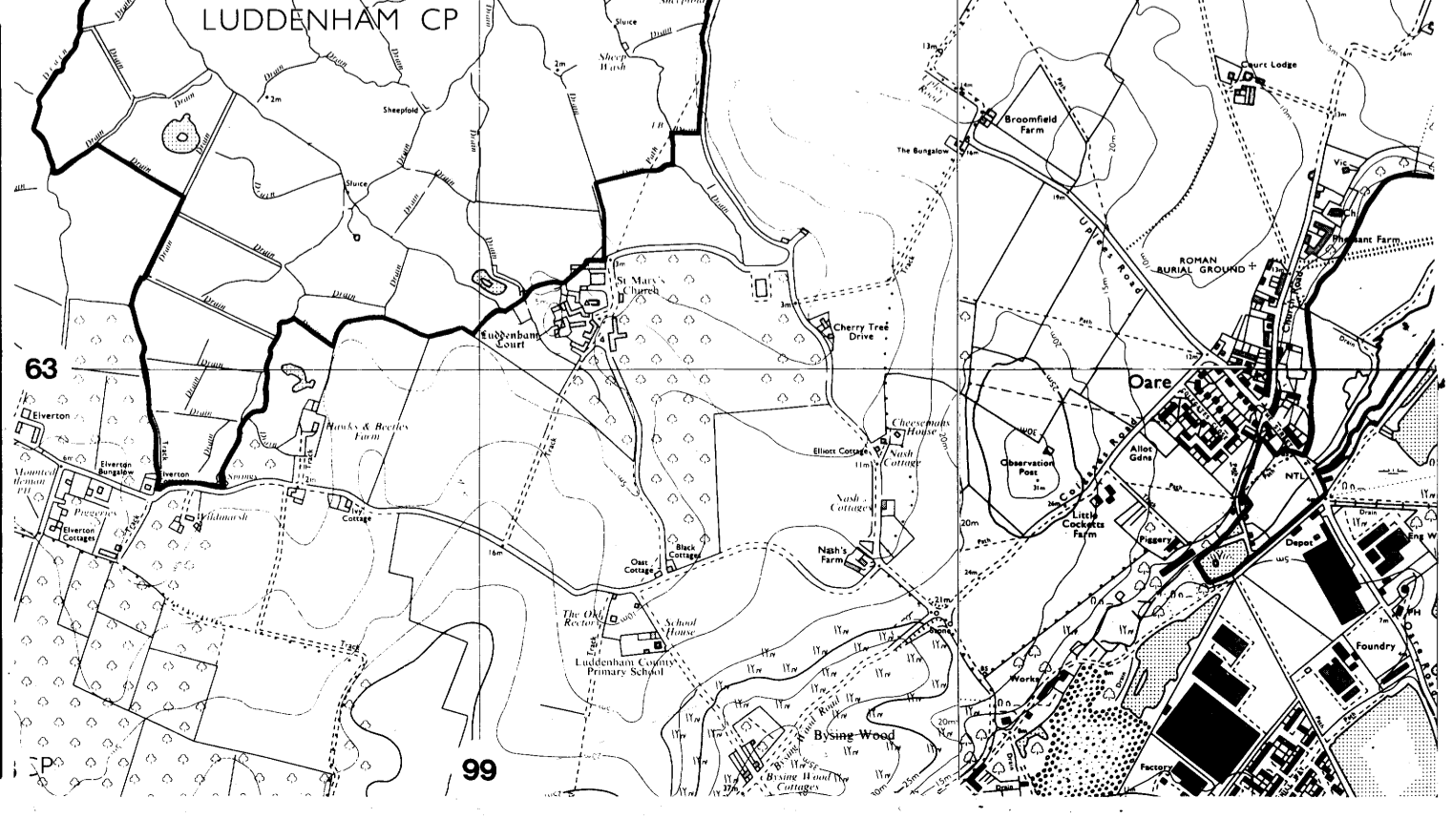
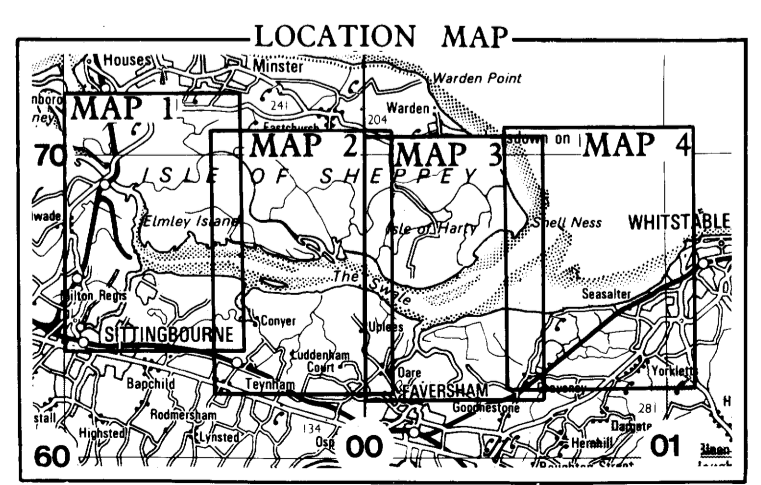
English Nature
Nature Conservancy Council for England

S.P.A./Ramsar Site boundary thus

Scale 1:15 000 Designation date: 15-12-93

0 metres / 500 0 feet / 1500

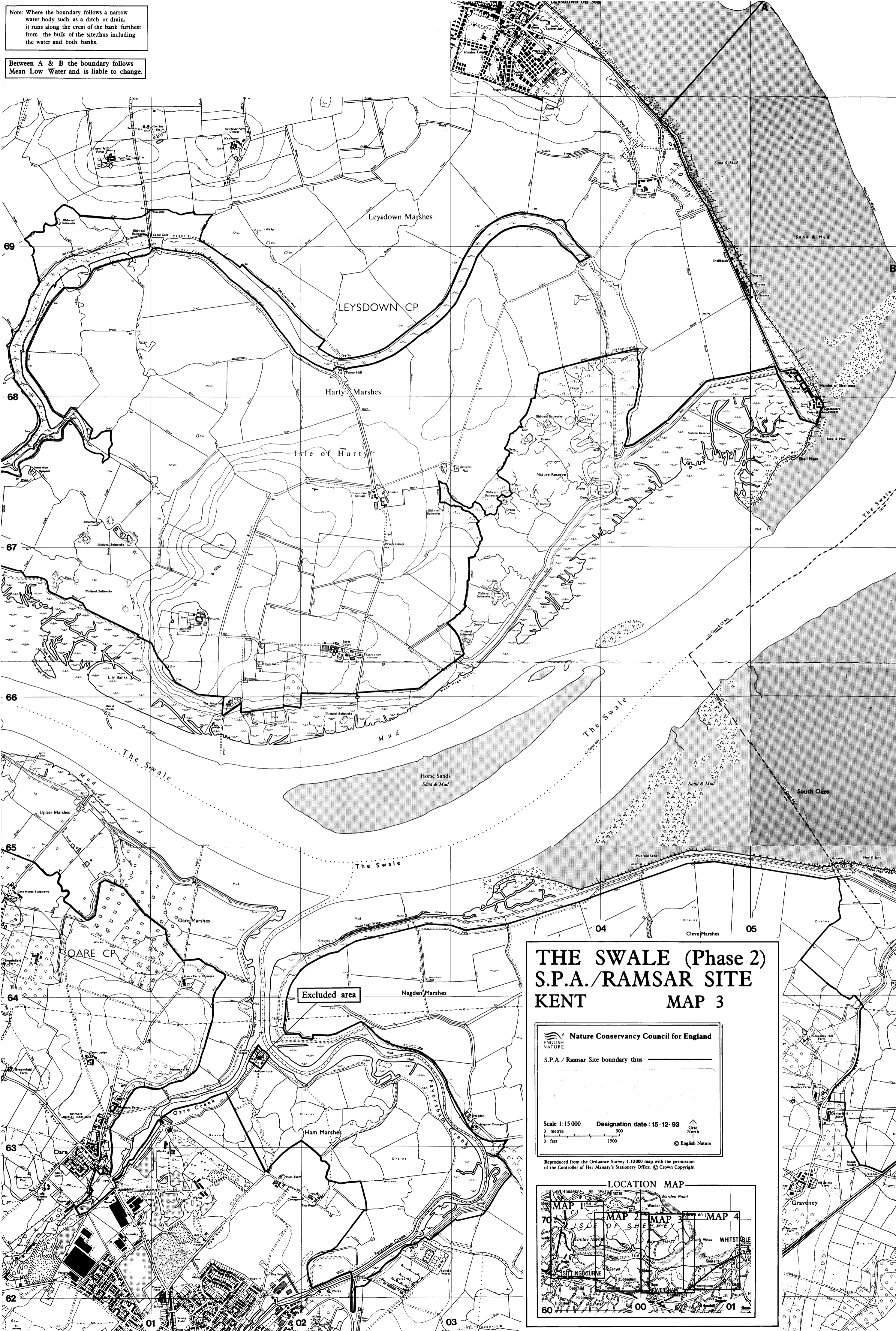
© English Nature



Reproduced from the Ordnance Survey 1:10 000 map with the permission of the Controller of Her Majesty's Stationery Office. © Crown Copyright

Note: Where the boundary follows a narrow water body such as a ditch or drain, it runs along the crest of the bank furthest from the bulk of the site, thus including the water and both banks.

Between A & B the boundary follows Mean Low Water and is liable to change.



THE SWALE (Phase 2) S.P.A./RAMSAR SITE KENT MAP 3

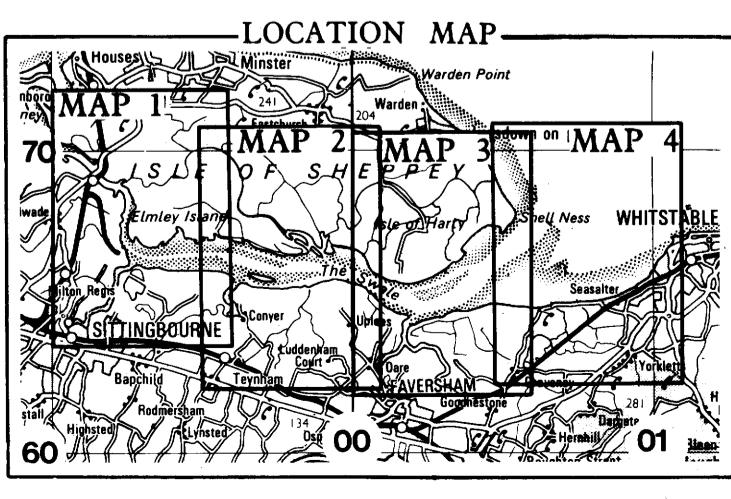
English Nature
Nature Conservancy Council for England

S.P.A./Ramsar Site boundary thus

Scale 1:15 000 Designation date: 15-12-93

0 metres 500 Grid North
0 feet 1500 © English Nature

Reproduced from the Ordnance Survey 1:10 000 map with the permission of the Controller of Her Majesty's Stationery Office. © Crown Copyright




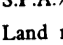
Excluded area

THE SWALE (Phase 2) S.P.A./RAMSAR SITE KENT

MAP 4

Note: Where the boundary follows a narrow water body such as a ditch or drain, it runs along the crest of the bank furthest from the bulk of the site, thus including the water and both banks.

Nature Conservancy Council for England
ENGLISH NATURE

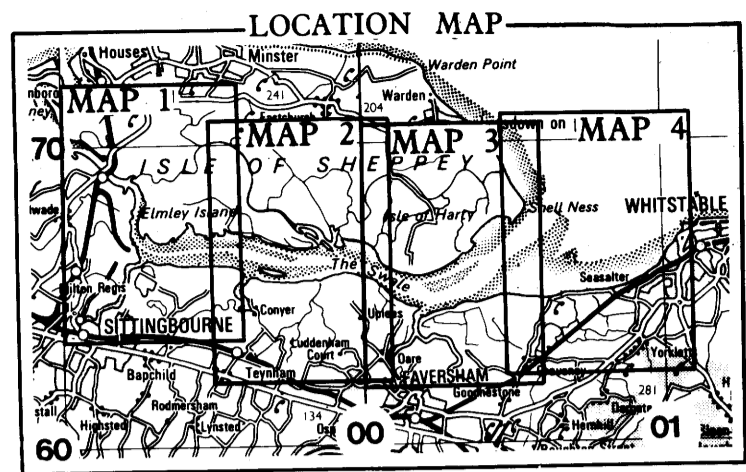
S.P.A./Ramsar Site boundary thus 
Land not previously included in designation 17.7.85 

Scale 1:15 000 Designation date: 15-12-93 Grid North

0 metres 500 1500
0 feet

© English Nature

Reproduced from the Ordnance Survey 1:10 000 map with the permission of the Controller of Her Majesty's Stationery Office. © Crown Copyright



Between A & B, C & D and E & F the boundary follows Mean Low Water and is liable to change.

Between D & E the boundary follows the Local Planning Authority boundary.

