

Khor Kalba Protected Area Ramsar Site



Kalba Conservation Area

1 km : 4.5 cm

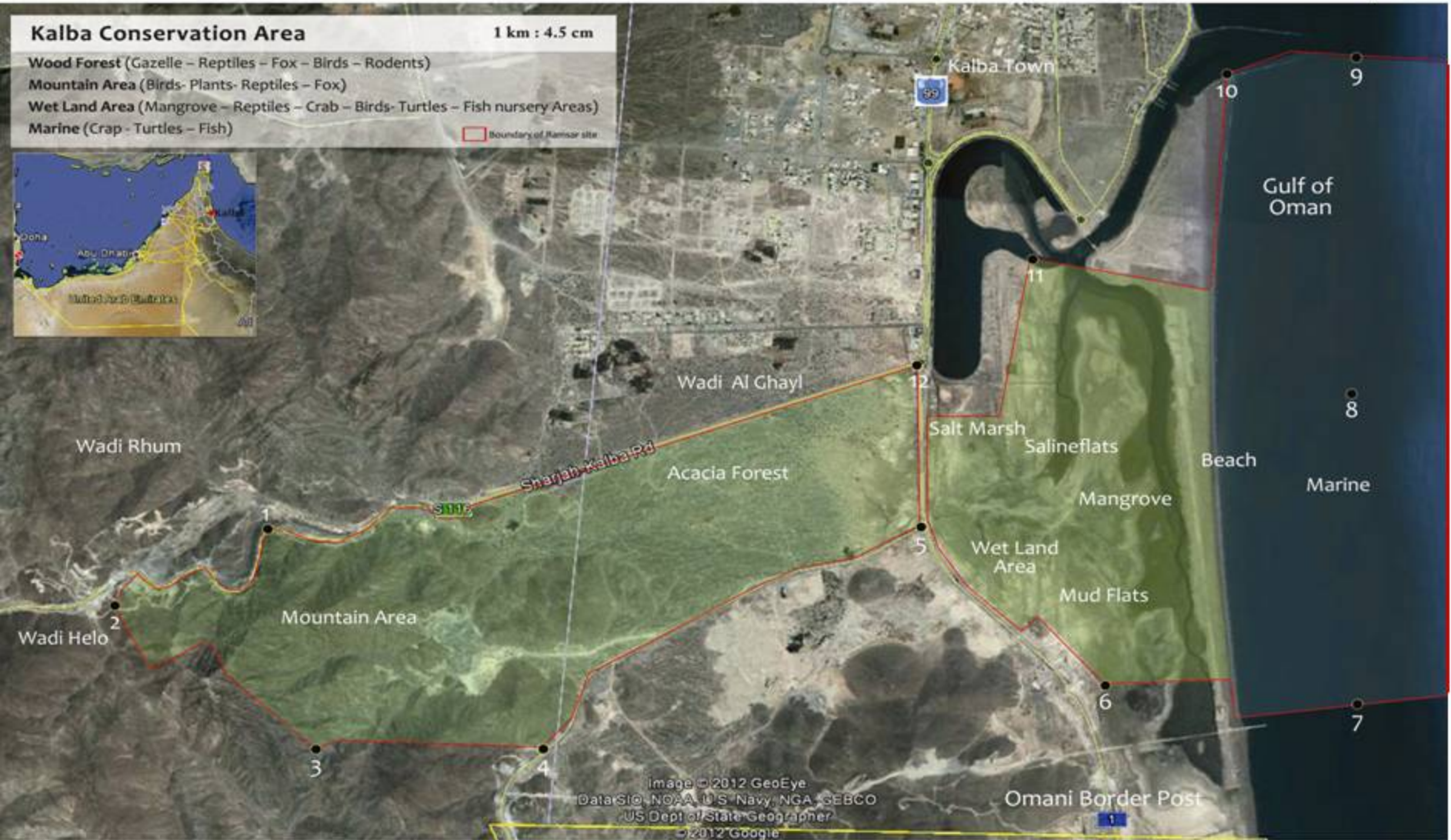
Wood Forest (Gazelle – Reptiles – Fox – Birds – Rodents)

Mountain Area (Birds- Plants- Reptiles – Fox)

Wet Land Area (Mangrove – Reptiles – Crab – Birds- Turtles – Fish nursery Areas)

Marine (Crap - Turtles – Fish)

Boundary of Ramsar site



1• 12° 59'23.64"N 56 18'16.82"E 442 ft

2• 24° 58'58.60"N 56 17'34.22"E 917 ft

3• 24° 58'28.67"N 56 18'27.65"E 708 ft

4• 24° 58'47.15"N 56 19'34.72"E 246 ft

5• 24° 59'36.41"N 56 21'02.42"E 3 ft

6• 24° 58'58.22"N 56 21'53.10"E 0 ft

7• 24° 58'59.61"N 56 23'09.28"E -8 ft

8• 25° 00'18.53"N 56 23'03.03"E -8 ft

9• 25° 01'44.18"N 56 23'07.02"E -8 ft

10• 25° 01'36.93"N 56 22'11.62"E 0 ft

11• 25° 00'46.71"N 56 21'31.67"E 1 ft

12• 25° 00'17.40"N 56 20'58.83"E 8 ft