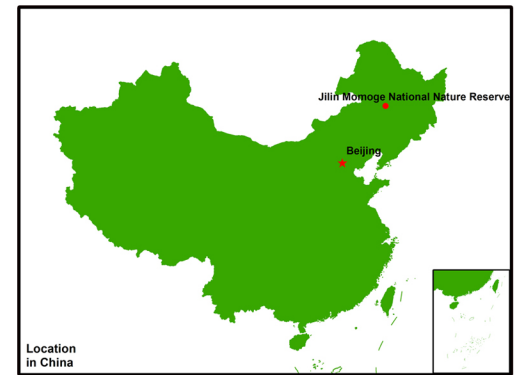
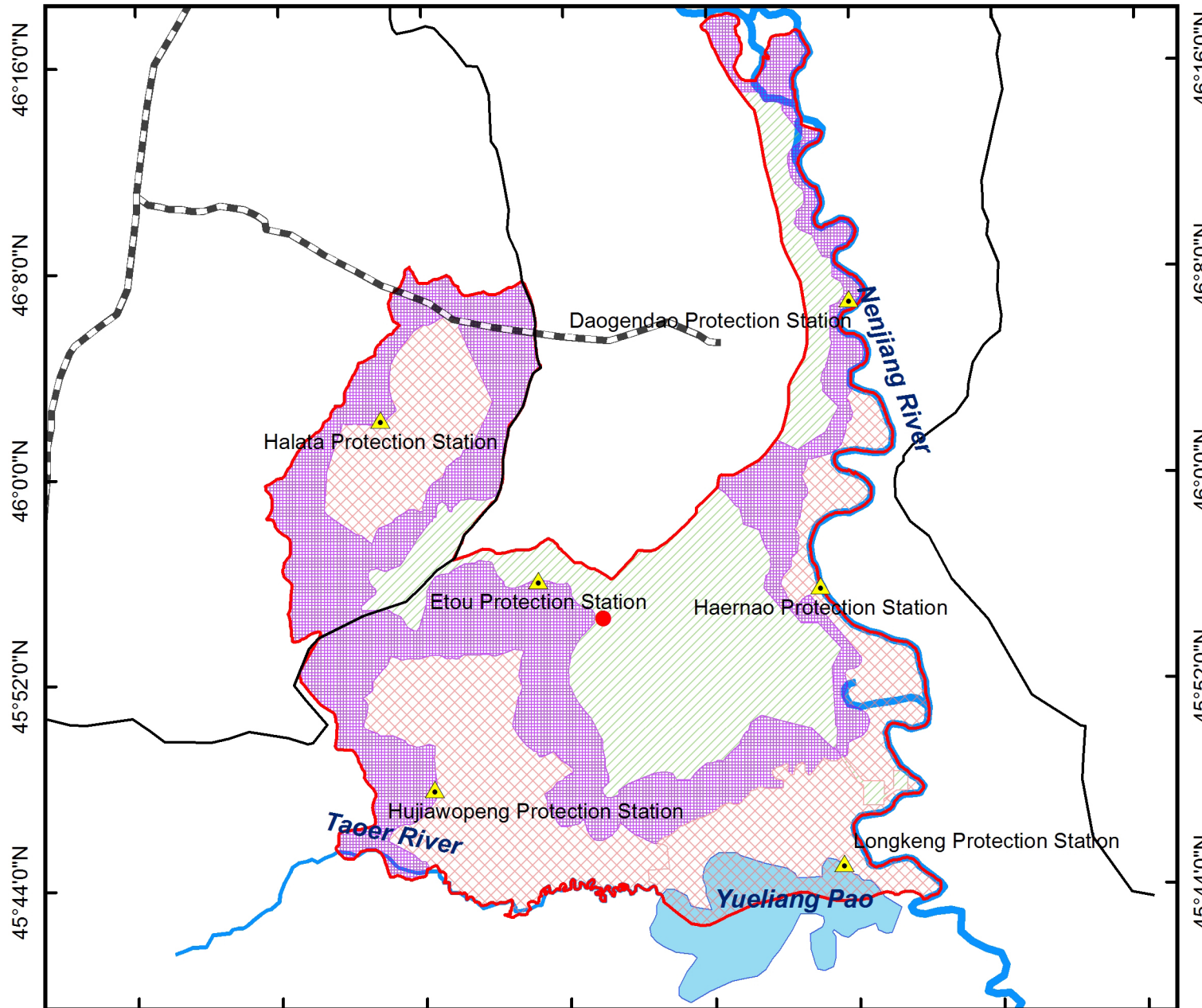


# Jilin Momoge National Nature Reserve Ramsar Site

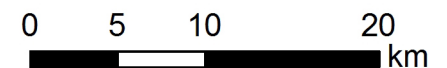
(Total area 144,000 ha)

123°20'0"E 123°28'0"E 123°36'0"E 123°44'0"E 123°52'0"E 124°0'0"E 124°8'0"E 124°16'0"E



## Legend

- Site Center
- ▲ Protection Stations
- Taoer River
- Nenjiang River
- Railway
- Provincial Roads
- Boundary of the Ramsar Site
- Core Area
- Buffer Area
- Experimental Area
- lake



123°20'0"E 123°28'0"E 123°36'0"E 123°44'0"E 123°52'0"E 124°0'0"E 124°8'0"E 124°16'0"E

46°16'0"N  
46°8'0"N  
46°0'0"N  
45°52'0"N  
45°44'0"N

46°16'0"N  
46°8'0"N  
46°0'0"N  
45°52'0"N  
45°44'0"N