

Glenelg Estuary and Discovery Bay Ramsar Site

Boundary Description



Author

Brooks, S.

Citation

Department of Environment, Land, Water and Planning (2017). Glenelg Estuary and Discovery Bay Ramsar Site Boundary Description. Department of Environment, Land, Water and Planning. East Melbourne, Victoria.

Steering committee membership

The steering committee was comprised of the following: Gavin Prentice, Helen Arundel and Adam Bester (Glenelg Hopkins Catchment Management Authority), Andrea White and Peter Lawson (DELWP), Bernadette Hoare (Parks Victoria) and the Commonwealth Department of Environment and Energy.

Photo credit

Glenelg River estuary and mouth looking east along Discovery Bay, October 2015, © Marcel Hoog Antink

© The State of Victoria Department of Environment, Land, Water and Planning 2017



This work is licensed under a Creative Commons Attribution 4.0 International licence. You are free to re-use the work under that licence, on the condition that you credit the State of Victoria as author. The licence does not apply to any images, photographs or branding, including the Victorian Coat of Arms, the Victorian Government logo and the Department of Environment, Land, Water and Planning (DELWP) logo. To view a copy of this licence, visit <http://creativecommons.org/licenses/by/4.0/>

ISBN 978-1-76047-946-6 (pdf/online)

Disclaimer

This publication may be of assistance to you but the State of Victoria and its employees do not guarantee that the publication is without flaw of any kind or is wholly appropriate for your particular purposes and therefore disclaims all liability for any error, loss or other consequence which may arise from you relying on any information in this publication.

Accessibility

If you would like to receive this publication in an alternative format, please telephone the DELWP Customer Service Centre on 136186, email customer.service@delwp.vic.gov.au, or via the National Relay Service on 133 677 www.relayservice.com.au. This document is also available on the internet at www.delwp.vic.gov.au.

Contents

1	Introduction	2
2	Method of Boundary Alignment	3
3	Location	4
4	Written description of the Glenelg Estuary and Discovery Bay Ramsar Site boundary	5
5	References	6

1 Introduction

Ramsar wetlands are wetlands of international importance listed under the Convention on Wetlands (Ramsar, Iran 1971). Victoria currently has 11 wetlands listed under this convention.

It is a requirement of the Convention on Wetlands that a suitable map or maps are provided for each Ramsar wetland. The Australian Government Department of the Environment requires that both the written description and the spatial data of the Ramsar site boundaries are accurate. This information is used to gazette the boundary of the declared Ramsar wetland in accordance with Section 327 of the *Environment Protection and Biodiversity Conservation Act 1999* (EPBC Act). Under the EPBC Act there are requirements for approval of activities which have, or are likely to have a significant impact on the ecological character of a declared Ramsar wetland. Precise identification of site boundaries helps to ensure that the exact boundaries of the Ramsar site can be easily identified, which can facilitate compliance with the EPBC Act as well as its effective enforcement.

This is the written description of the proposed Glenelg Estuary and Discovery Bay Ramsar Site to explicitly define the Ramsar boundaries, along with accompanying maps in accordance with the Australian Government Department of the Environment guidelines (Commonwealth of Australia 2014).

2 Method of Boundary Alignment

The proposed Ramsar boundary follows the boundaries of crown land parcels designated as parts of the Discovery Bay Coastal Park, Lower Glenelg National Park and Nelson Streamside Reserve. Vicmap Property data were supplied by Glenelg Hopkins Catchment Management Authority (also available from <http://www.data.vic.gov.au> – updated 6 October 2017 by Department of Environment, Land, Water and Planning, Victoria) and land parcels within the proposed boundary were identified.

The mean low water mark is an ambulatory boundary (*sensu* Commonwealth of Australia 2014) that was mapped for visual presentation and area calculation using the most seaward extent of the Vicmap Index Framework (Line) 1:25,000 zero contour coastline (available from <http://www.data.vic.gov.au> – updated 13 March 2017 by Department of Environment, Land, Water and Planning, Victoria) and Vicmap Property parcel boundaries.

Area in hectares has been calculated in the projection Albers Equal Area and rounded to the nearest single decimal place. Appendix A lists the area in hectares for the site. Appendix B includes maps of this Ramsar site.

3 Location

The proposed Glenelg Estuary and Discovery Bay Ramsar Site is located 340km west of Melbourne in the state of Victoria on the coast adjacent to the state border with South Australia (Figure). It includes the Glenelg Estuary and adjacent Lower Glenelg National Park and the part of the Discovery Bay Coastal Park that contains Oxbow Lake, Long Swamp, Lake Monibeong, Swan Lake, Malseed Lake and Bridgewater Lakes (Map 1). The site includes approximately 50km of coast down to the mean low water mark. It covers an area of approximately 22,289 ha.

Location of the Glenelg Estuary and Discovery Bay Ramsar Site

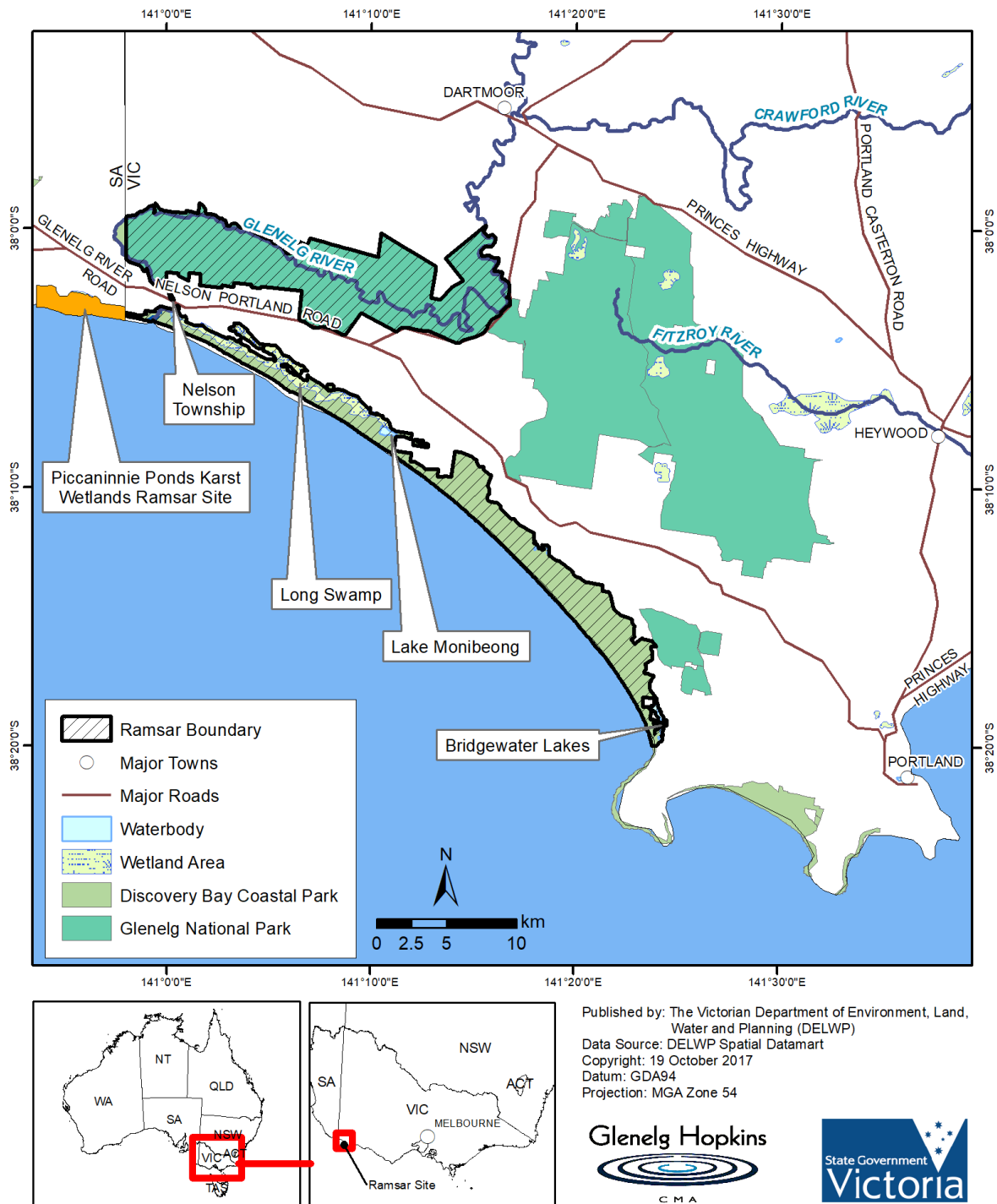


Figure 1 Glenelg Estuary and Discovery Bay Ramsar Site location.

4 Written description of the Glenelg Estuary and Discovery Bay Ramsar Site boundary

The Glenelg Estuary and Discovery Bay Ramsar Site consists of (Map 2):

- Seventeen crown land parcels of the Discovery Bay Coastal Park, namely:
 - All of crown allotment 11 of Section 5 on Parish Plan PP3202;
 - All of crown allotment 9 of Section A on Parish Plan PP2861;
 - All of crown allotments 6A, 7A, 15A, 12A, 41B, 24C and 8 on Parish Plan PP3749;
 - All of crown allotments 14A of Section A and 23A, 23B on Parish Plan PP2673;
 - All of crown allotments 1B, 5, 6 and 7 of Section A on Parish Plan PP3553;
 - All of crown allotment 12 of Section 9 on Parish Plan PP3553.
- All unallocated crown land bounded by the southward prolongation of the western boundary of crown allotment 23B on Parish Plan PP2673, the south-western boundaries of crown allotments 23B on Parish Plan PP2673, 8 on Parish Plan PP3749, 9 of Section A on Parish Plan PP2861, 11 of Section 5 on Parish Plan PP3202 and 5 of Section A on Parish Plan PP3553, the southern boundary of parcel 5 of Section A on Parish Plan PP3553 and the Mean Low Water Mark of the Southern Ocean.
- Three adjacent crown land parcels of the Glenelg River and Nelson Streamside Reserve, namely (Map 3):
 - All of crown allotment 44A on Parish Plan PP2673
 - All of crown allotments 2A and 30A of Section 5 on Parish Plan PP5584
- Ten adjacent crown land parcels of the Lower Glenelg National Park west of the Winnap-Nelson Road, namely:
 - All of crown allotments 1A, 38A and 41B on Parish Plan PP2055;
 - All of crown allotment 5A on Parish Plan PP2673;
 - All of crown allotment 17 of Section 5 on Parish Plan PP2861;
 - All of crown allotment 23 on Parish Plan PP2884;
 - All of crown allotment 17 on Parish Plan PP3365;
 - All of crown allotment 49 and 2001 on Parish Plan PP3733;
 - All of crown allotment 44 on Parish Plan PP3749.

The site excludes:

- All private land in the township of Nelson (Map 3).
- Crown land of the Glenelg River estuary south of and including the Nelson to Portland Road and north of Oxbow Lake that is defined by crown allotment 30B of Section 5 on Parish Plan PP5584, crown allotments 36B, 36C and 36D on Parish Plan PP2673, and the Nelson-Portland Road defined by Vicmap road casement persistent feature identifier (PFI) 132491075 (Map 4).
- Unnamed government roads near Lake Monibeong Vicmap PFI 132493250, 132492162 and 132496176 (Map 5).
- All of allotments 1, 1A, 2 and 3 of Section A on Parish Plan PP3553 adjacent to Bridgewater Lakes and unnamed government roads Vicmap PFI 132510790, 132492838 and 132500803 (Map 6).

5 References

Commonwealth of Australia (2014). Boundary Description and Mapping Guidelines (Second Edition).

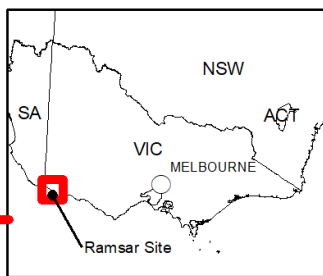
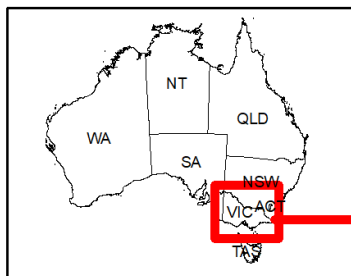
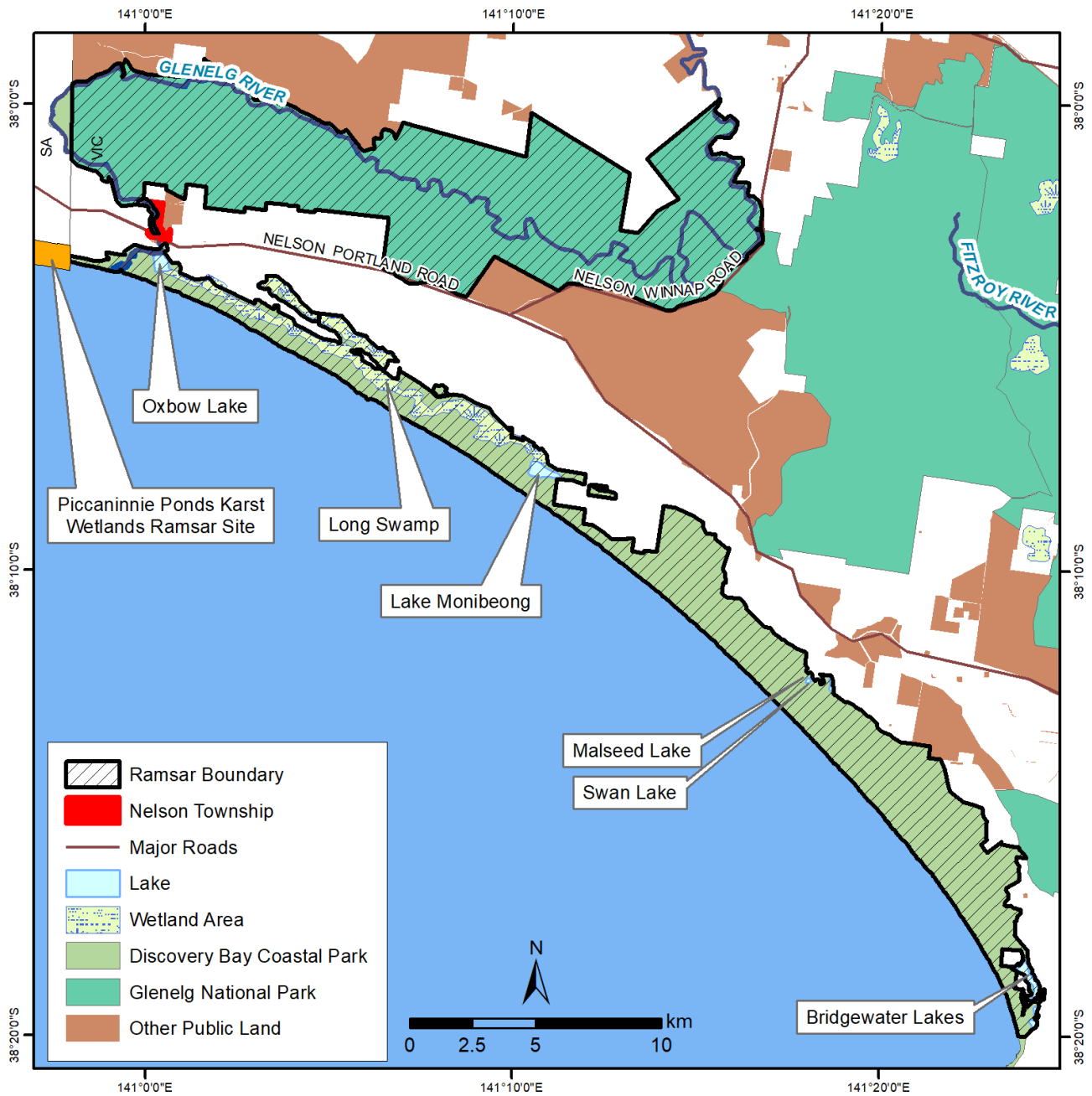
Appendix A: Area in hectares

Site Name	Albers equal area (hectares)
Glenelg Estuary and Discovery Bay Ramsar Site	22,289 ha

Appendix B: Maps

Map number	Description
1	Wetlands in the Glenelg Estuary and Discovery Bay Ramsar Site
2	Alignment of the Glenelg Estuary and Discovery Bay Ramsar Site with parcel boundaries
3	South-west extent of the Glenelg Estuary and Discovery Bay Ramsar Site
4	Crown land excluded from the Glenelg Estuary and Discovery Bay Ramsar Site within the township of Nelson
5	Long Swamp and Lake Monibeong in the Glenelg Estuary and Discovery Bay Ramsar Site
6	South-east extent of the Glenelg Estuary and Discovery Bay Ramsar Site

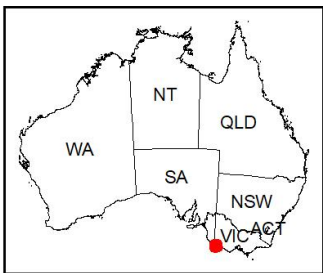
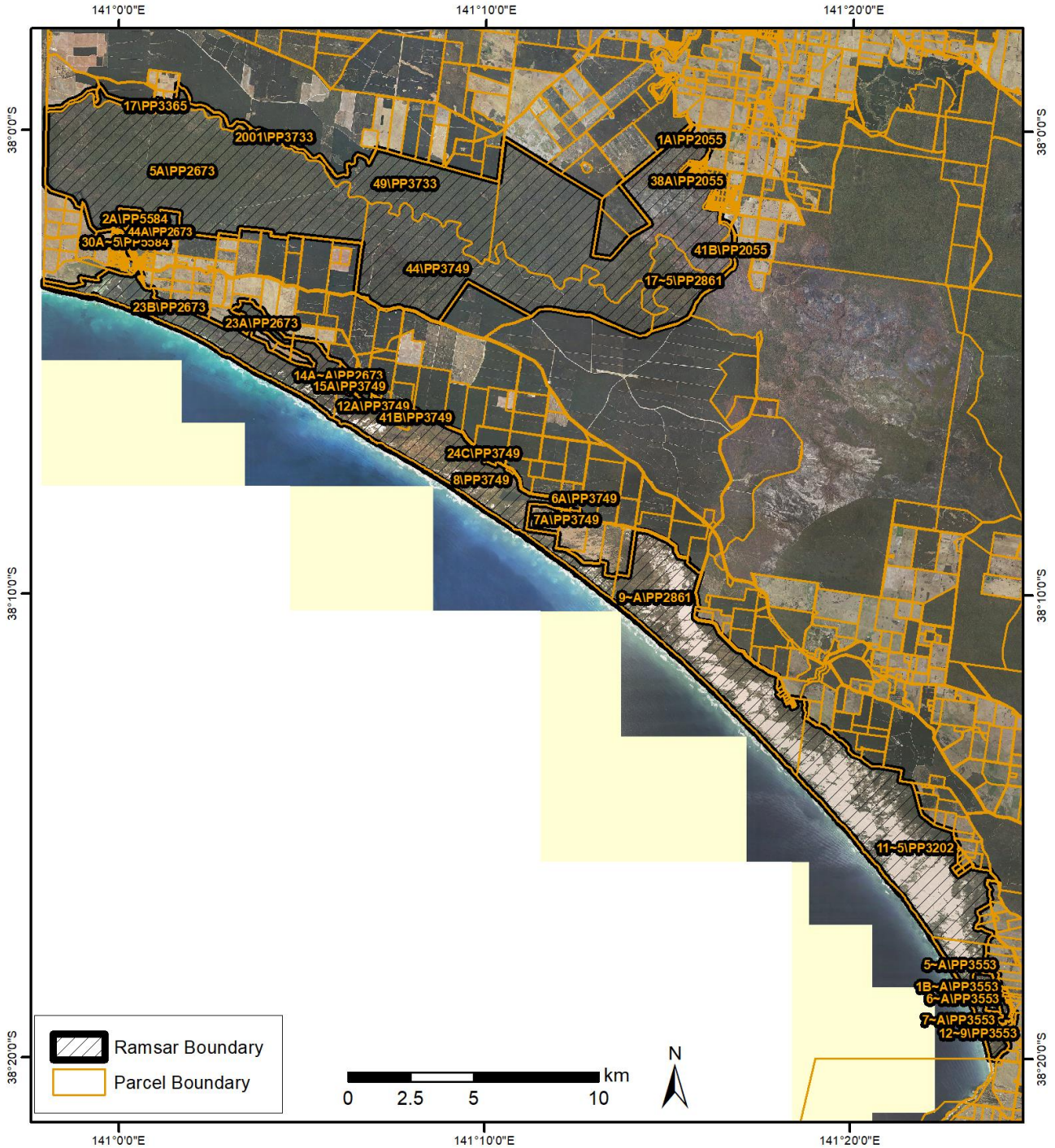
Map 1. Wetlands in the Glenelg Estuary and Discovery Bay Ramsar Site



Published by: The Victorian Department of Environment, Land, Water and Planning (DELWP)
 Data Source: DELWP Spatial Datamart
 Copyright: 19 October 2017
 Datum: GDA94
 Projection: MGA Zone 54



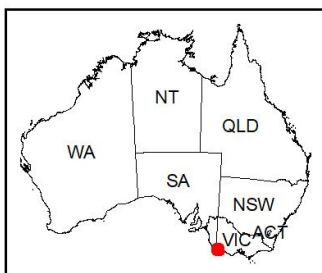
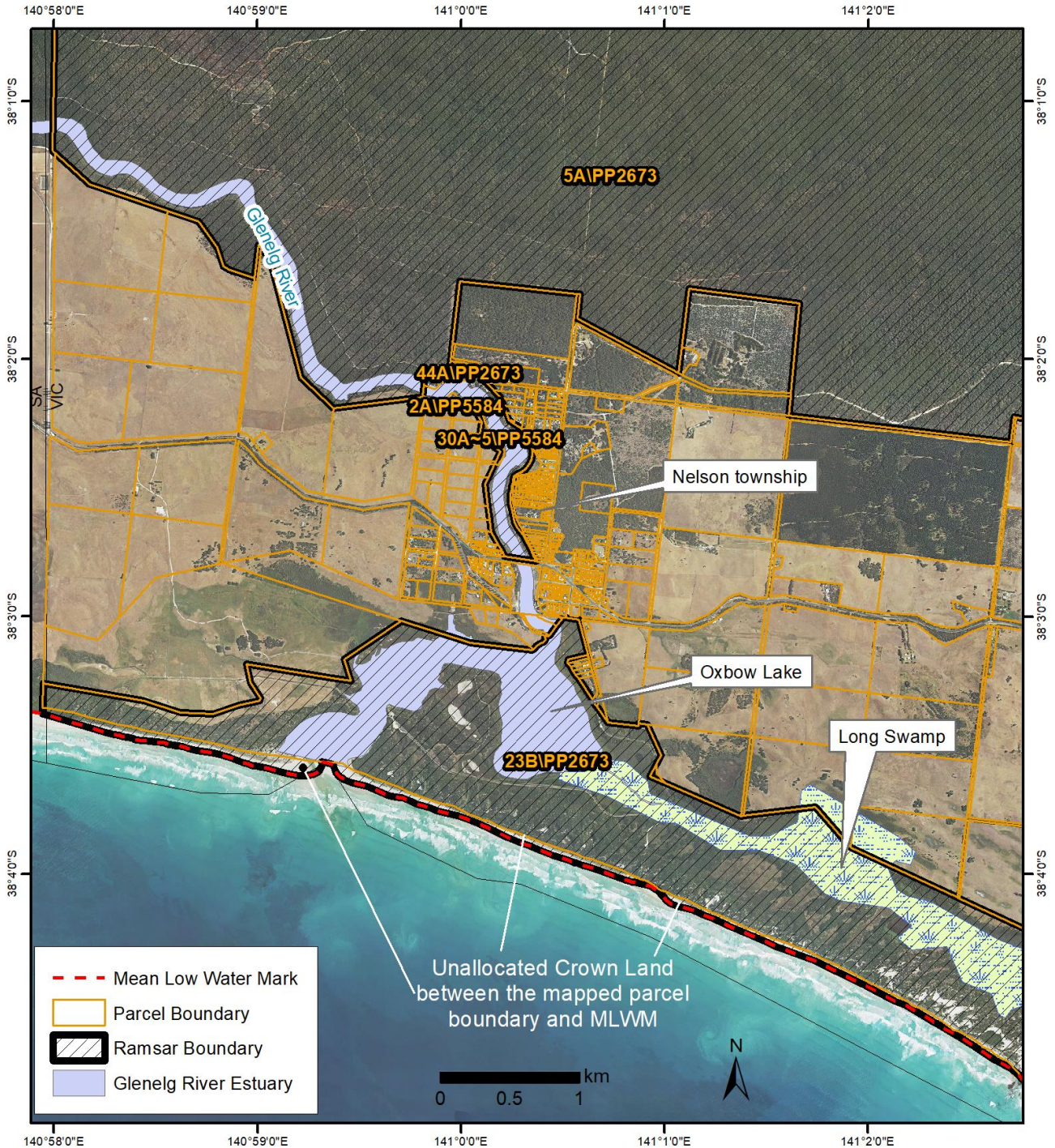
Map 2. Alignment of the Glenelg Estuary and Discovery Bay Ramsar Site with parcel boundaries



Published by: The Victorian Department of Environment, Land,
Water and Planning (DELWP)
Data Source: DELWP Spatial Datamart
Copyright: 19 October 2017
Datum: GDA94
Projection: MGA Zone 54



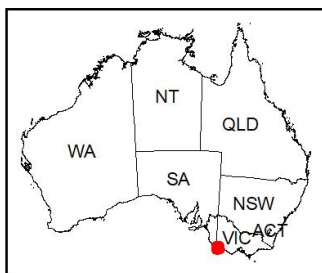
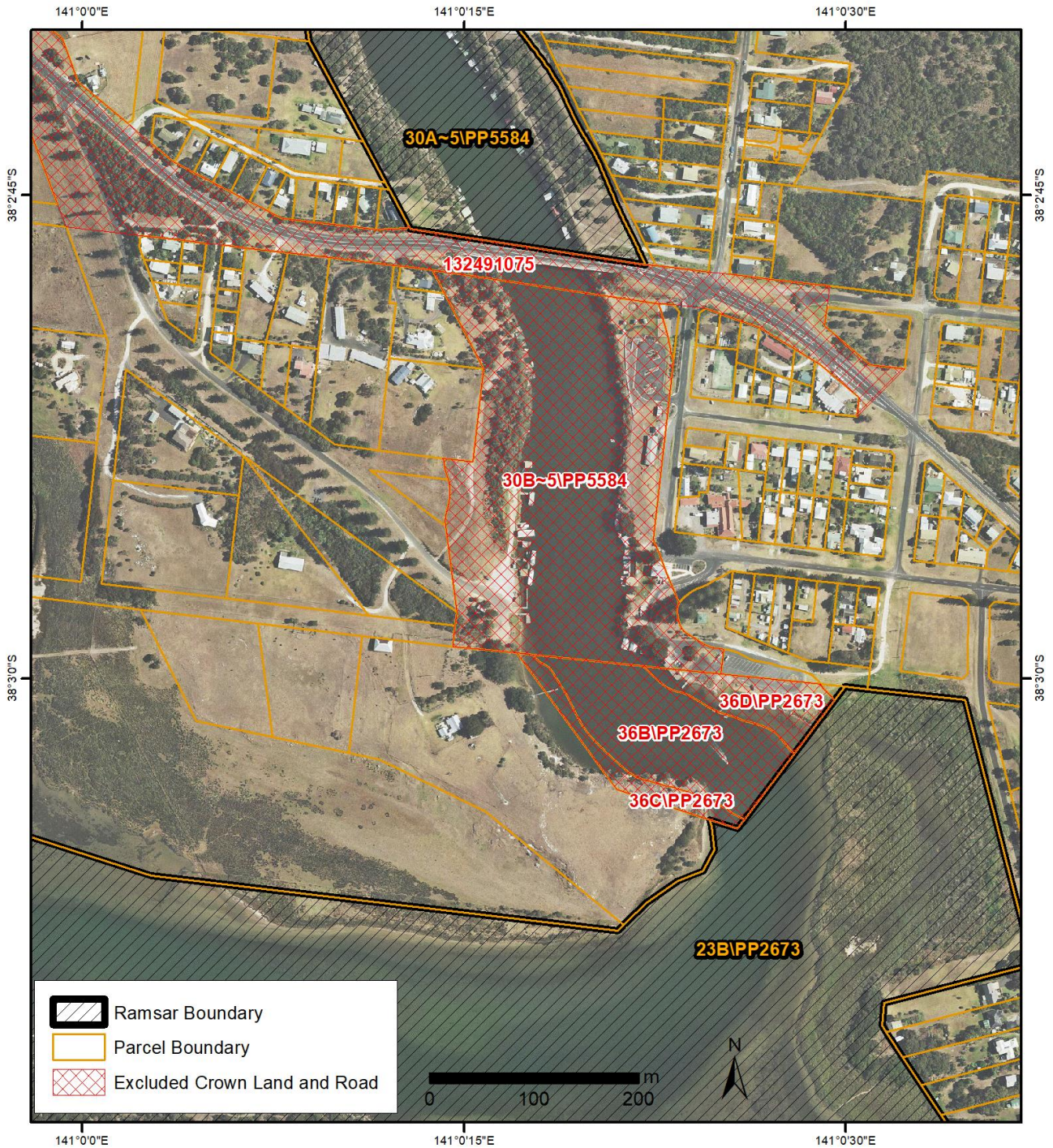
Map 3. South-west extent of the Glenelg Estuary and Discovery Bay Ramsar Site



Published by: The Victorian Department of Environment, Land,
Water and Planning (DELWP)
Data Source: DELWP Spatial Datamart
Copyright: 19 October 2017
Datum: GDA94
Projection: MGA Zone 54



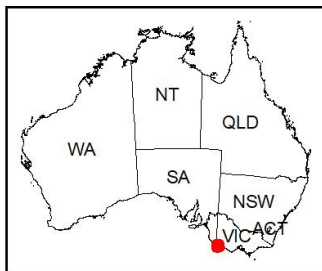
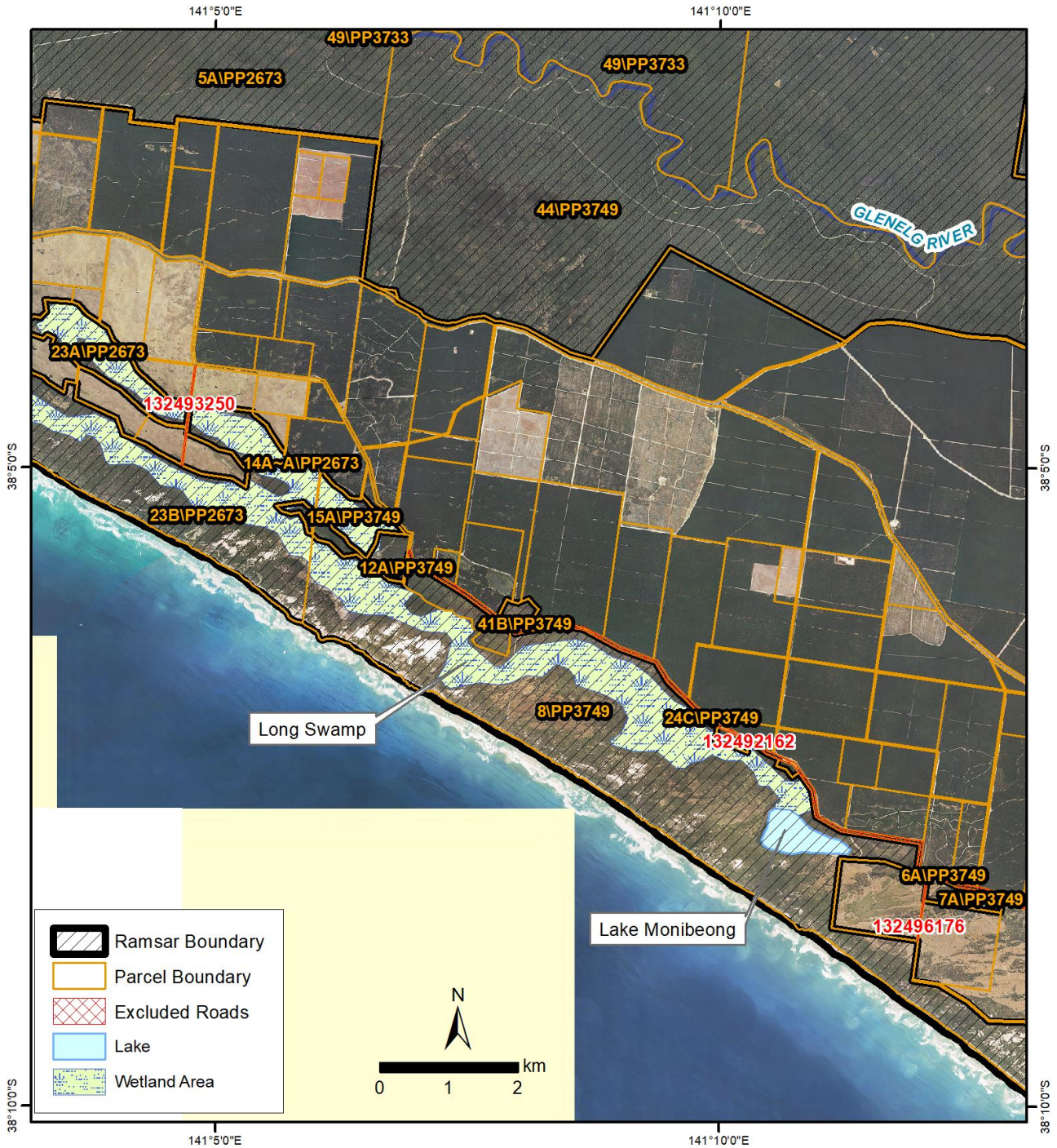
Map 4. Crown land excluded from the Glenelg Estuary and Discovery Bay Ramsar Site within the township of Nelson



Published by: The Victorian Department of Environment, Land, Water and Planning (DELWP)
 Data Source: DELWP Spatial Datamart
 Copyright: 19 October 2017
 Datum: GDA94
 Projection: MGA Zone 54



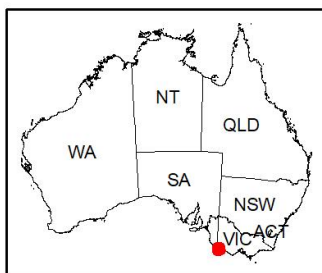
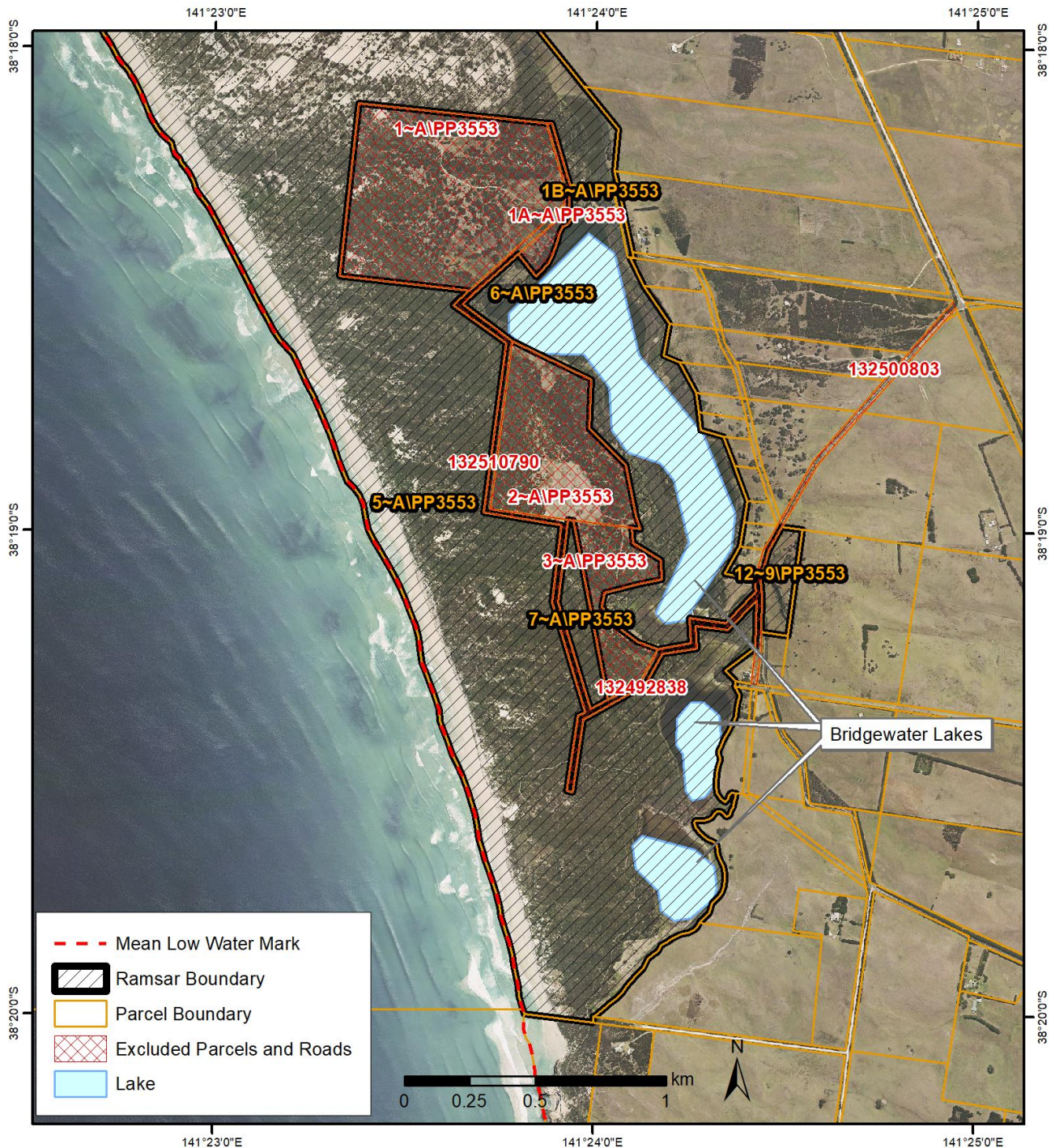
Map 5. Long Swamp and Lake Monibeong in the Glenelg Estuary and Discovery Bay Ramsar Site



Published by: The Victorian Department of Environment, Land,
Water and Planning (DELWP)
Data Source: DELWP Spatial Datamart
Copyright: 19 October 2017
Datum: GDA94
Projection: MGA Zone 54



Map 6. South-east extent of the Glenelg Estuary and Discovery Bay Ramsar Site



Published by: The Victorian Department of Environment, Land,
Water and Planning (DELWP)
Data Source: DELWP Spatial Datamart
Copyright: 19 October 2017
Datum: GDA94
Projection: MGA Zone 54



