



Door County Planning Dept.
421 Nebraska Street
Sturgeon Bay, WI 54235
(920) 746-2323

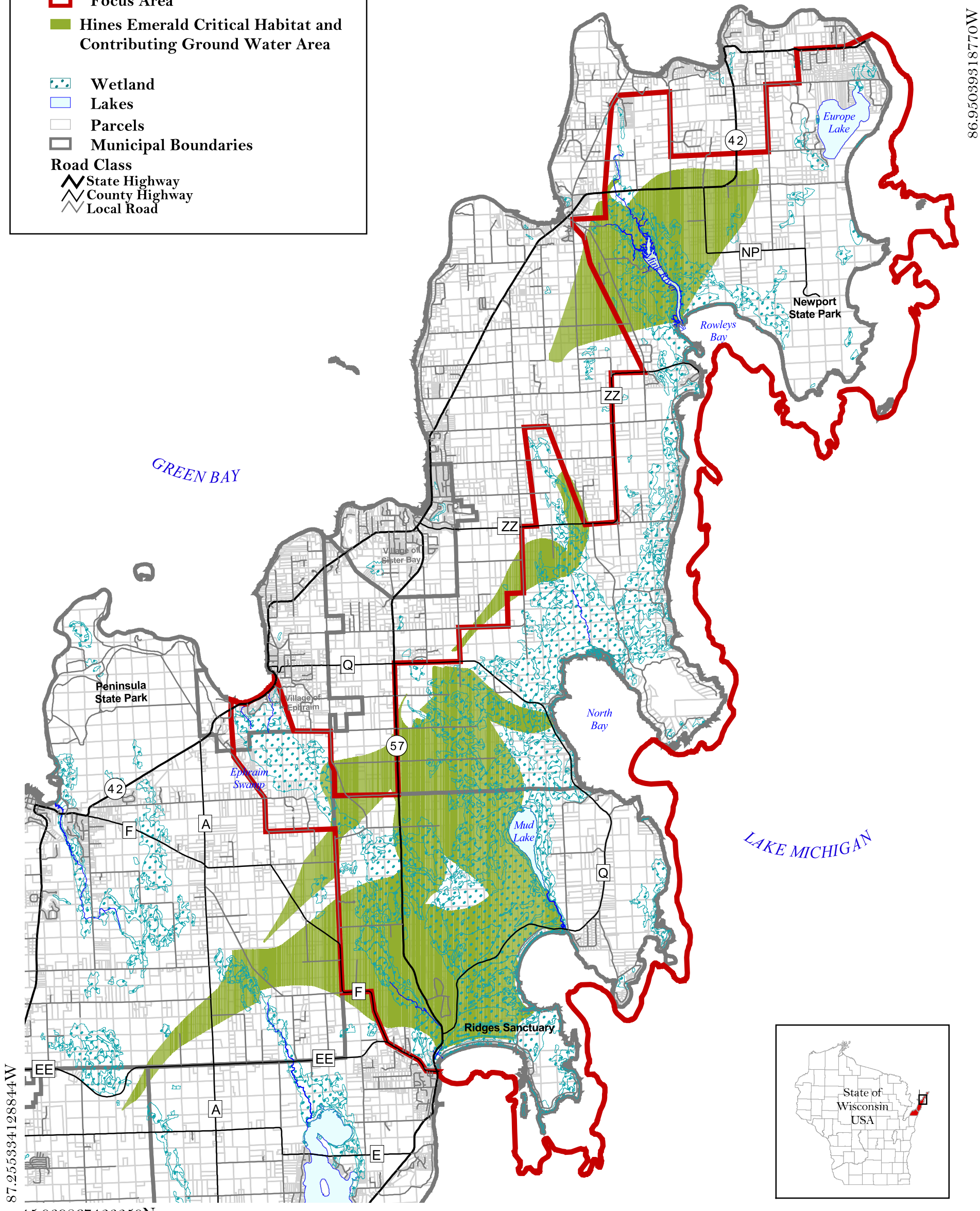
Map 2: Hines Emerald Habitat Door Peninsula Coastal Wetlands

May, 2014

45.299161054352N

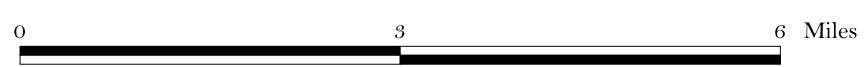
- Focus Area
- Hines Emerald Critical Habitat and Contributing Ground Water Area
- Wetland
- Lakes
- Parcels
- Municipal Boundaries
- Road Class**
- State Highway
- County Highway
- Local Road

86.95039318770W



87.255334128844W

45.039867423250N



Prepared for Ramsar Advisory Committee
by Door County Planning Department
May, 2014