

240215 242215 244215 246215 248215 250215



Ministério do Ambiente, do Ordenamento do Território e do Desenvolvimento Regional



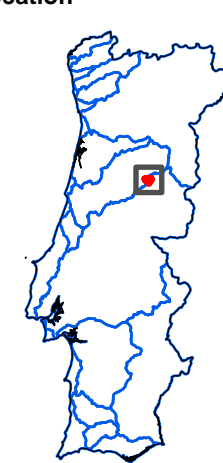
**ICN**  
Instituto da Conservação da Natureza



**Ramsar Site: Estrela Mountain upper Plateau and upper Zêzere River**

**Site boundaries and Ramsar wetland types**

**Location**



- Legend**
- Portugal boundaries
  - Catchment areas boundaries
  - Ramsar Site Location

0 100 200 Kilometers

**Legend:**

- RAMSAR Site boundaries
  - Roads
- Ramsar wetland types**
- U - Non-forest peatlands
  - Y - freshwater springs
  - M - Permanent rivers/streams/creeks
  - N - Seasonal/intermittent/irregular streams
  - Xf - Freshwater, tree dominated wetlands
  - 2 - Pond
  - 4 - Seasonally flooded agricultural land
  - 6 - Water storage areas
  - Tp - Permanent freshwater marshes/pools
  - Ts - Seasonal/intermittent freshwater marshes/pools on inorganic soils
  - Va - Alpine wetlands

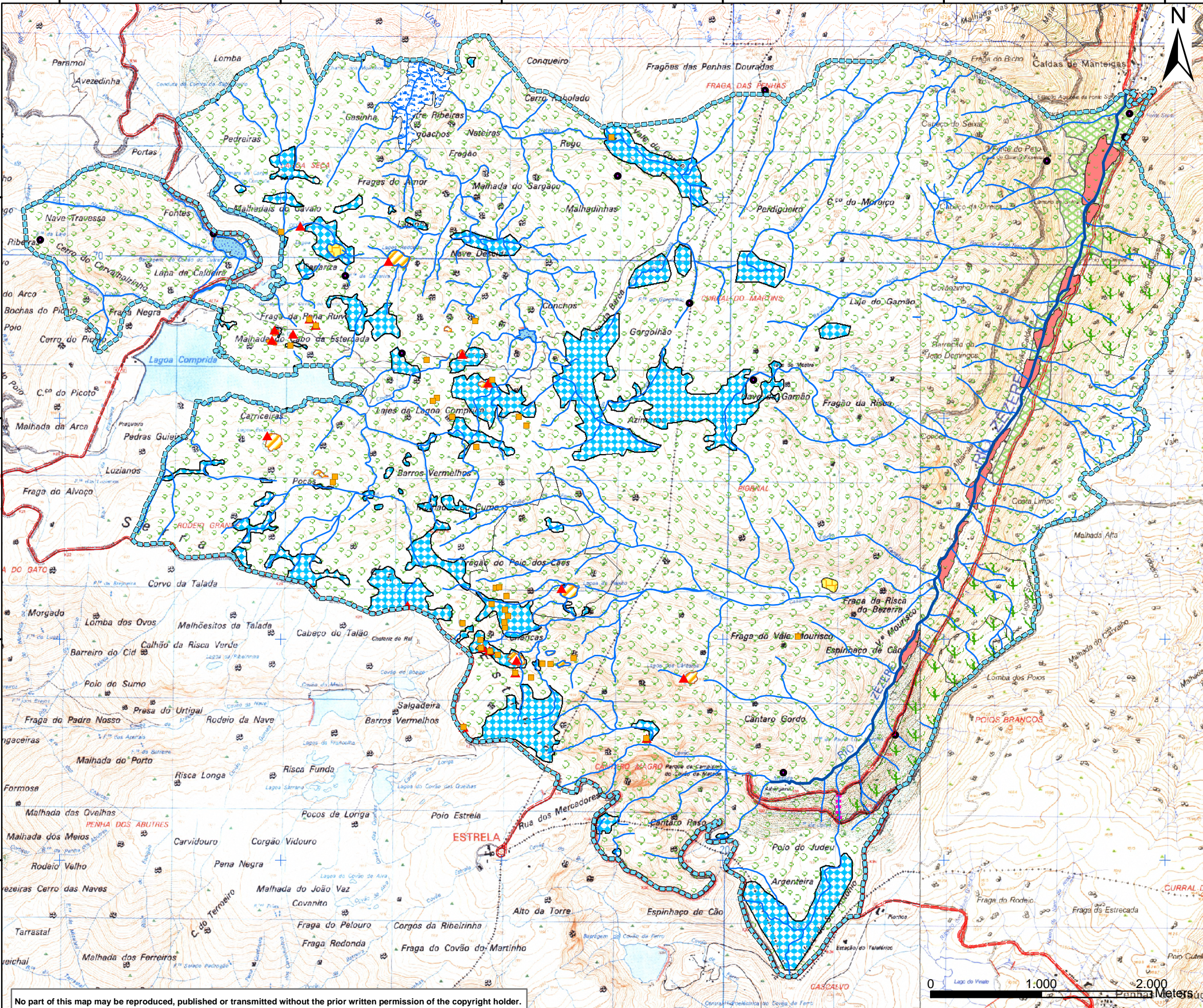
**Corine Land Cover**

- 2 - Agricultural areas
- 3.1 - Forests
- 3.2 - Scrub and/or herbaceous vegetation associations

Date: 2005 Scale: 1:35.000

Coordinate System:  
Gauss Projection  
International Ellipsoid  
Hayford Lisbon Datum  
HGM System (IGeoE)

Notes:  
Cartographic base:  
Portugal military maps  
maps nº 212, 213, 222,  
223 and 224  
1:25000, IGeoE



0 1.000 2.000 Meters

No part of this map may be reproduced, published or transmitted without the prior written permission of the copyright holder.

240215 242215 244215 246215 248215 250215

376632 376632 376632 376632 376632