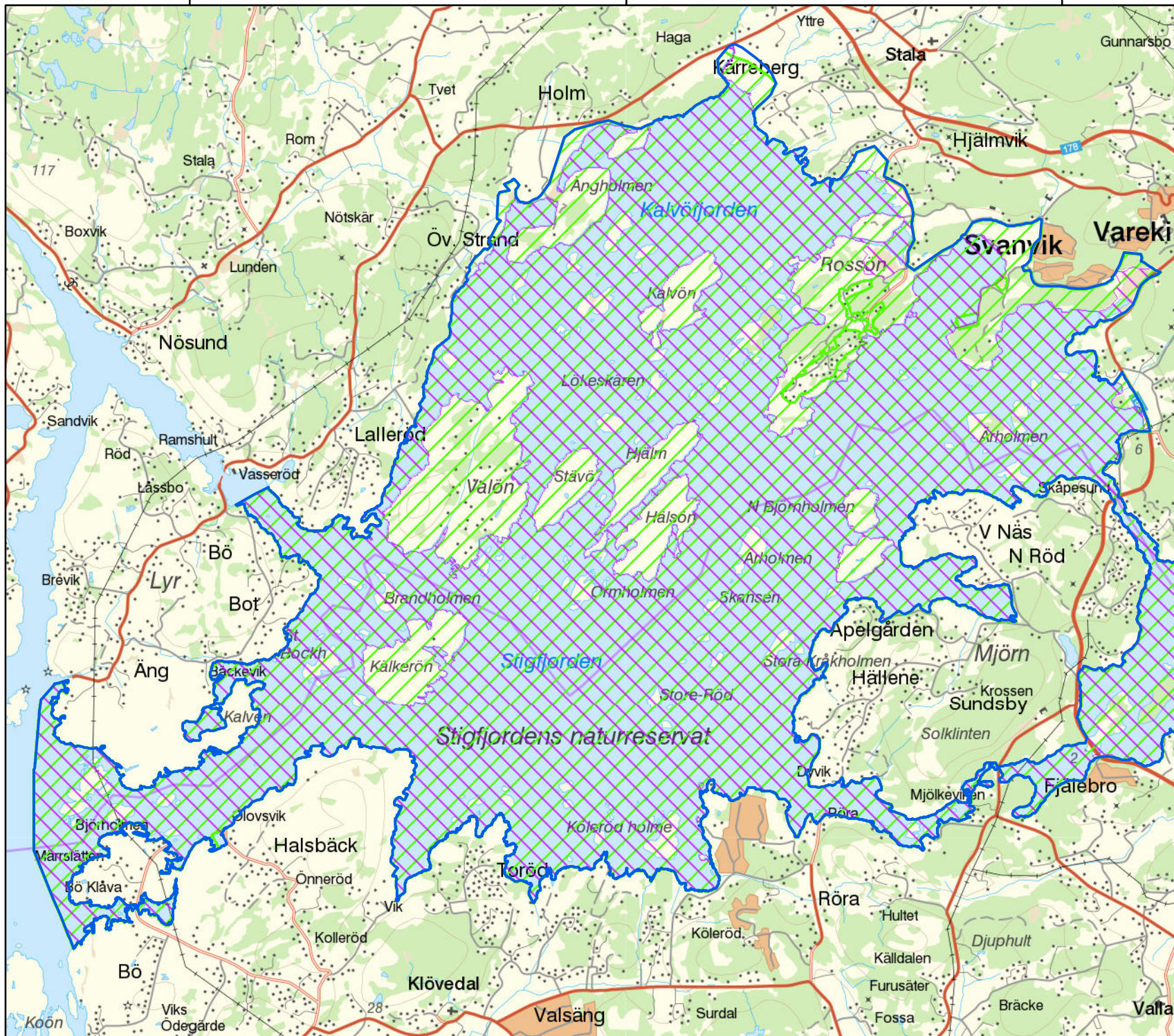


295000

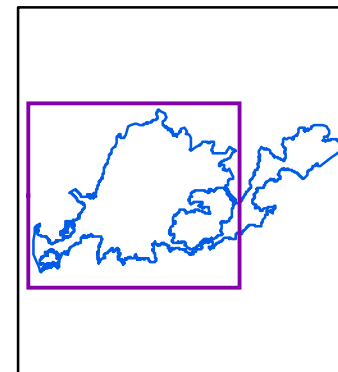
300000

305000











Stigfjorden

West part



Legend

	Ramsar site		Mire
	Protected area		Open area
	Natura 2000 site		Water
	Built-up area		Forest

Data sources

Topographic background map: ©Lantmäteriet
dnr:109-2011/3027
Ramsar sites vector data: ©Naturvårdsverket Oct 2014
Decision to be taken 2015
Natura 2000 vector data: ©Naturvårdsverket Jan 2014
Nature reserves vector data: ©Naturvårdsverket Oct 2014

This map was produced by Metria AB Oct 2014.
©2014 Naturvårdsverket

Cartographic information

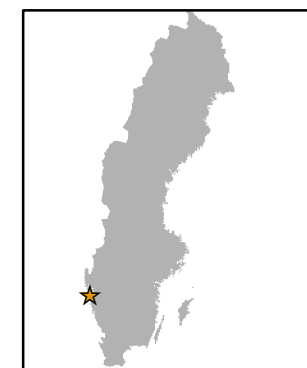
Coordinate system: SWEREF99
Projection: Transverse Mercator
Coordinates of Ramsar site:
58°5'N 11°36'E (West part)

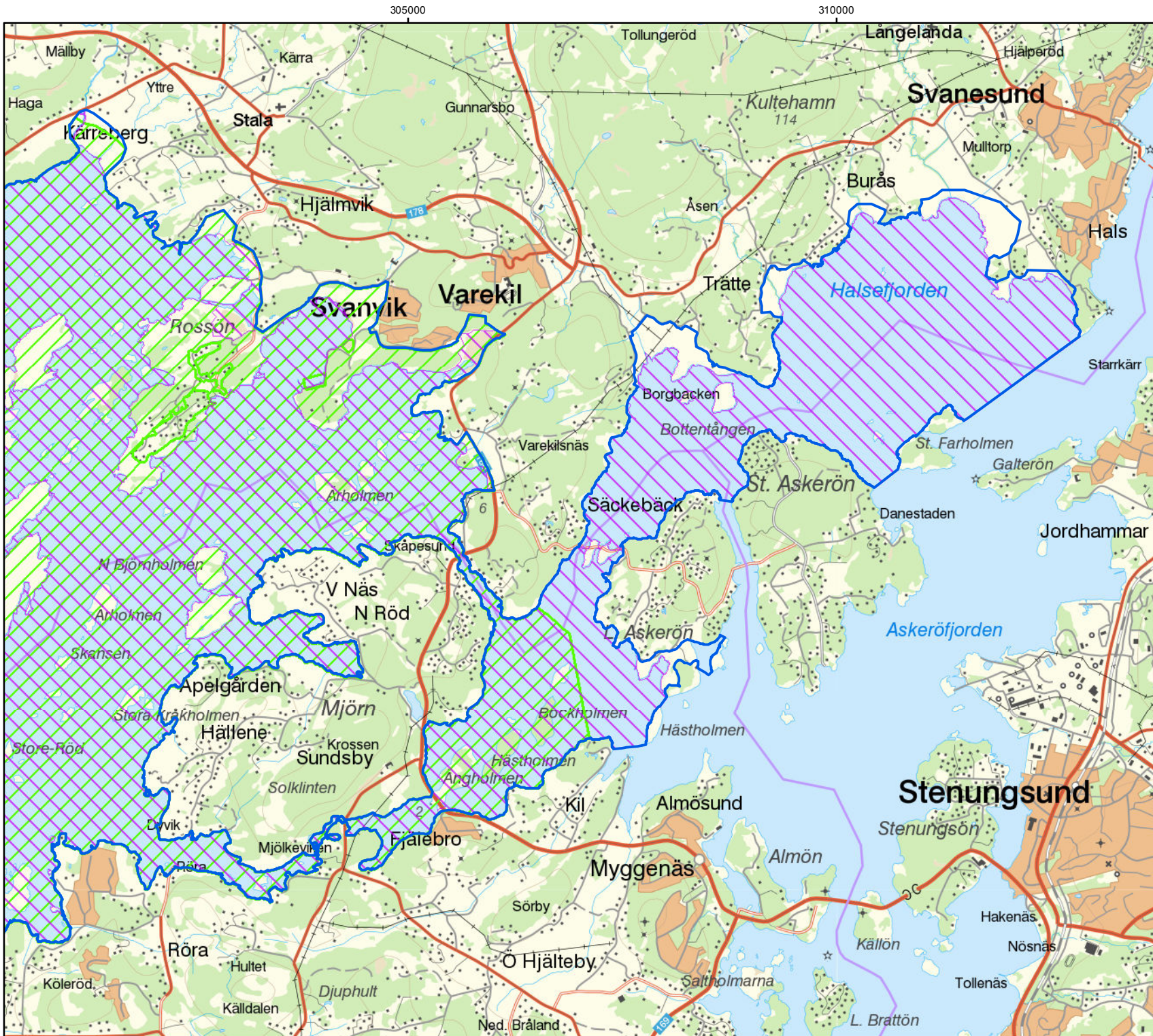
Scale: 1:60 000 for A4 prints



6440000

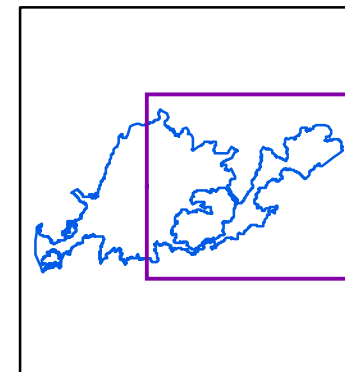
6440000





Stigfjorden

East part



Legend

- | | |
|------------------|-----------|
| Ramsar site | Mire |
| Protected area | Open area |
| Natura 2000 site | Water |
| Built-up area | Forest |

Data sources

Topographic background map: ©Lantmäteriet dnr:109-2011/3027
 Ramsar sites vector data: ©Naturvårdsverket Oct 2014 Decision to be taken 2015
 Natura 2000 vector data: ©Naturvårdsverket Jan 2014
 Nature reserves vector data: ©Naturvårdsverket Oct 2014

This map was produced by Metria AB Oct 2014.
 ©2014 Naturvårdsverket

Cartographic information

Coordinate system: SWEREF99
 Projection: Transverse Mercator
 Coordinates of Ramsar site: 58°5'N 11°44'E (East part)

Scale: 1:60 000 for A4 prints

