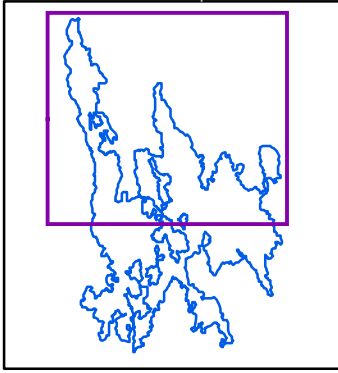


# Asnen

Northern part



## Legend

- Ramsar site
- Protected area
- Natura 2000 site
- Forest
- Water
- Built-up area
- Open area
- Mire

## Data sources

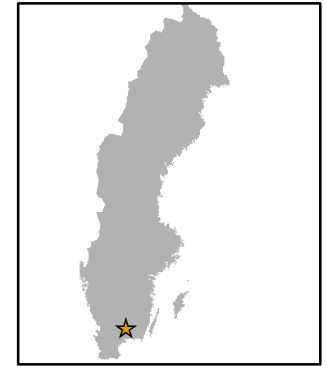
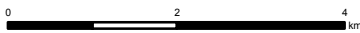
Topographic background map: ©Lantmäteriet dnr:109-2011/3027  
 Ramsar sites vector data: ©Naturvårdsverket Oct 2014 Decision to be taken 2015  
 Natura 2000 vector data: ©Naturvårdsverket Jan 2014  
 Nature reserves vector data: ©Naturvårdsverket Oct 2014  
 This map was produced by Metria AB Oct 2014.  
 ©2014 Naturvårdsverket

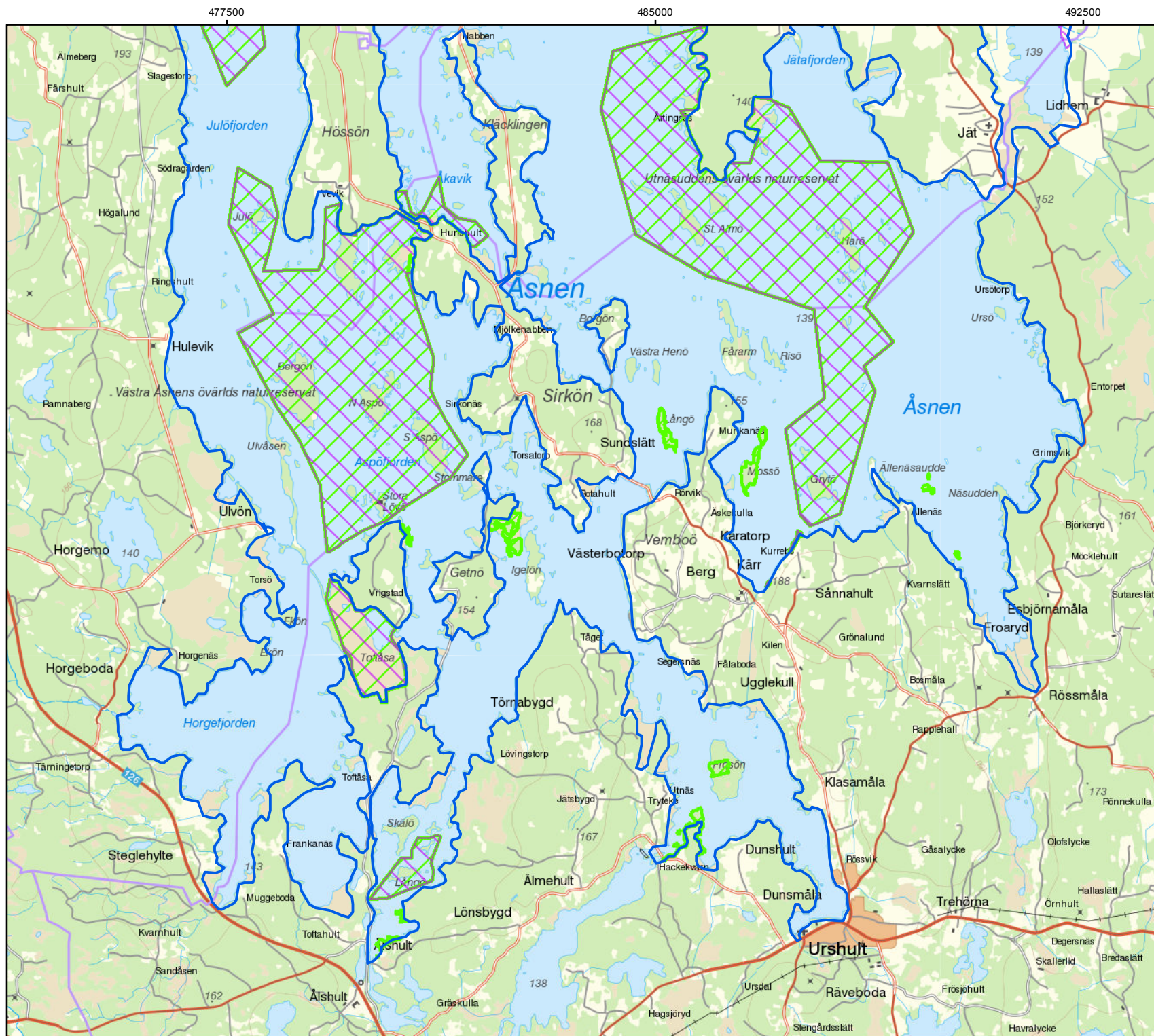
## Cartographic information

Coordinate system: SWEREF99  
 Projection: Transverse Mercator  
 Coordinates of Ramsar site: 56°40'N 14°41'E (Northern part)



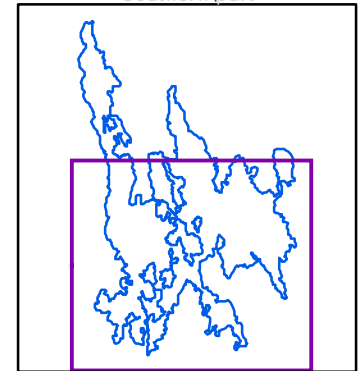
Scale: 1:90 000 for A4 prints





# Åsnen

Southern part



## Legend

- |                  |               |
|------------------|---------------|
| Ramsar site      | Water         |
| Protected area   | Built-up area |
| Natura 2000 site | Open area     |
| Forest           | Mire          |

## Data sources

Topographic background map: ©Lantmäteriet  
 dnr:109-2011/3027  
 Ramsar sites vector data: ©Naturvårdsverket Oct 2014  
 Decision to be taken 2015  
 Natura 2000 vector data: ©Naturvårdsverket Jan 2014  
 Nature reserves vector data: ©Naturvårdsverket Oct 2014  
 This map was produced by Metria AB Oct 2014.  
 ©2014 Naturvårdsverket

## Cartographic information

Coordinate system: SWEREF99  
 Projection: Transverse Mercator  
 Coordinates of Ramsar site:  
 56°35'N 14°42'E (Southern part)

Scale: 1:90 000 for A4 prints

