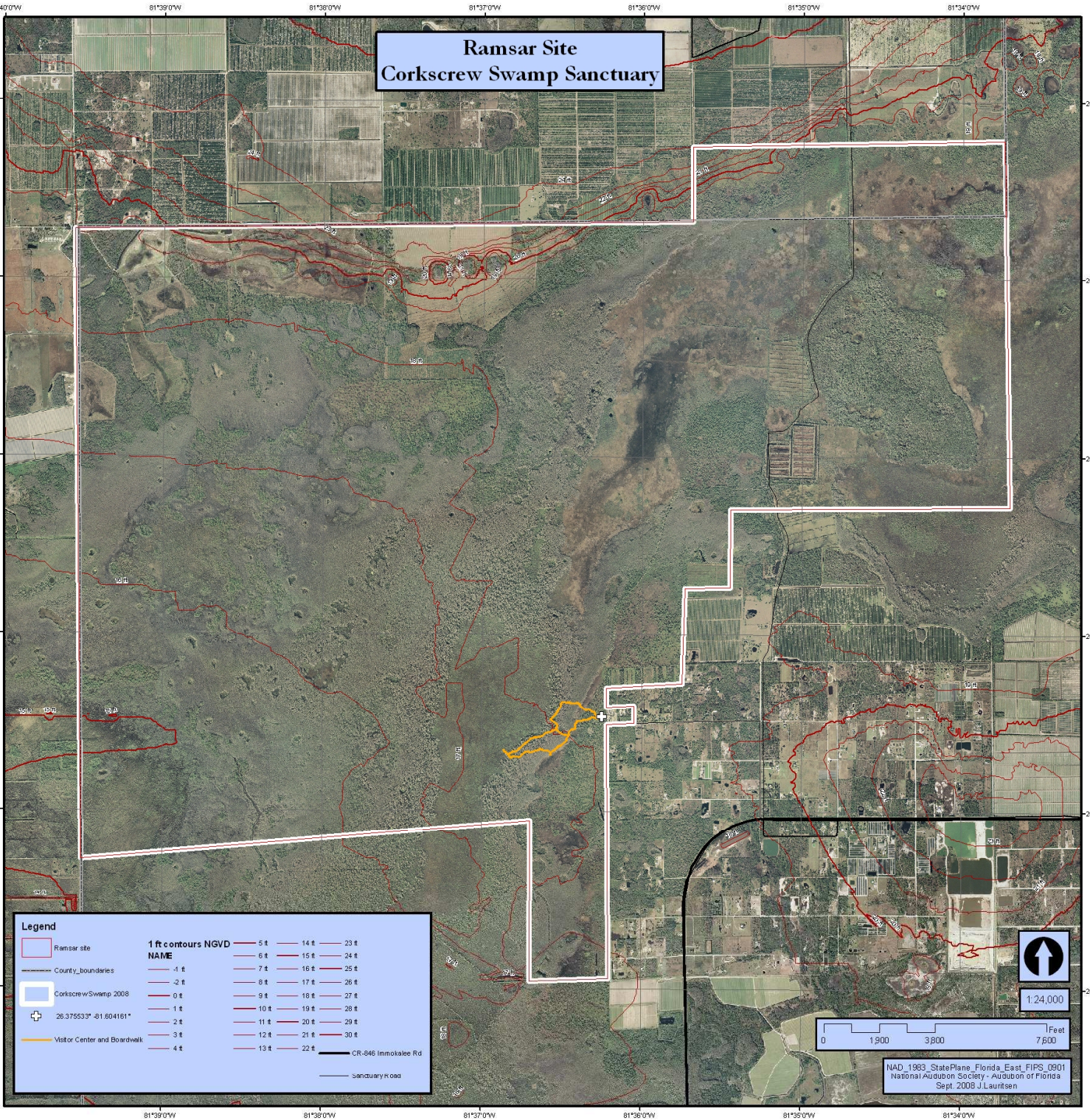


Ramsar Site Corkscrew Swamp Sanctuary



Legend

- Ramsar site
- County boundaries
- Corkscrew Swamp 2008
- + 26.375533°N -81.604161°W
- Visitor Center and Boardwalk
- CR-846 Immokalee Rd
- Sanctuary road

1 ft contours NGVD		
NAME		
	5 ft	14 ft
	6 ft	15 ft
	7 ft	16 ft
	8 ft	17 ft
	9 ft	18 ft
	10 ft	19 ft
	11 ft	20 ft
	12 ft	21 ft
	13 ft	22 ft
	14 ft	23 ft
	15 ft	24 ft
	16 ft	25 ft
	17 ft	26 ft
	18 ft	27 ft
	19 ft	28 ft
	20 ft	29 ft
	21 ft	30 ft



1:24,000



NAD_1983_StatePlane_Florida_East_FIPS_0901
National Audubon Society - Audubon of Florida
Sept. 2008 J Lauritsen