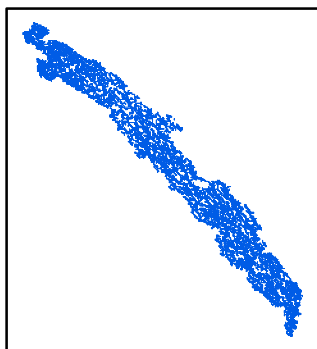






Vindelälven

Overview



Legend

-  Ramsar site
-  Water
-  Forest
-  Open area

Data sources

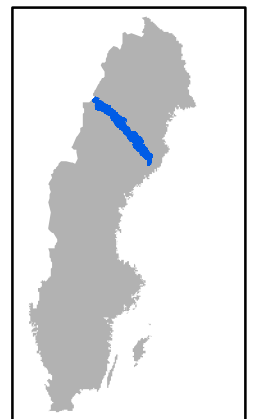
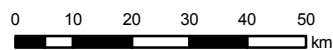
Topographic background map: ©Lantmäteriet
 dnr:109-2011/3027
 Ramsar sites vector data: ©Naturvårdsverket Sep 2012
 Natura 2000 vector data: ©Naturvårdsverket Sep 2012
 Nature reserves vector data: ©Naturvårdsverket Aug 2012

This map was produced by Metria AB October 2012.
 ©2012 Naturvårdsverket

Cartographic information

Coordinate system: SWEREF99
 Projection: Transverse Mercator
 Ramsar site coordinates: 61°56'N 15°30'E (NW corner)
 61°46'N 16°09'E (SE corner)

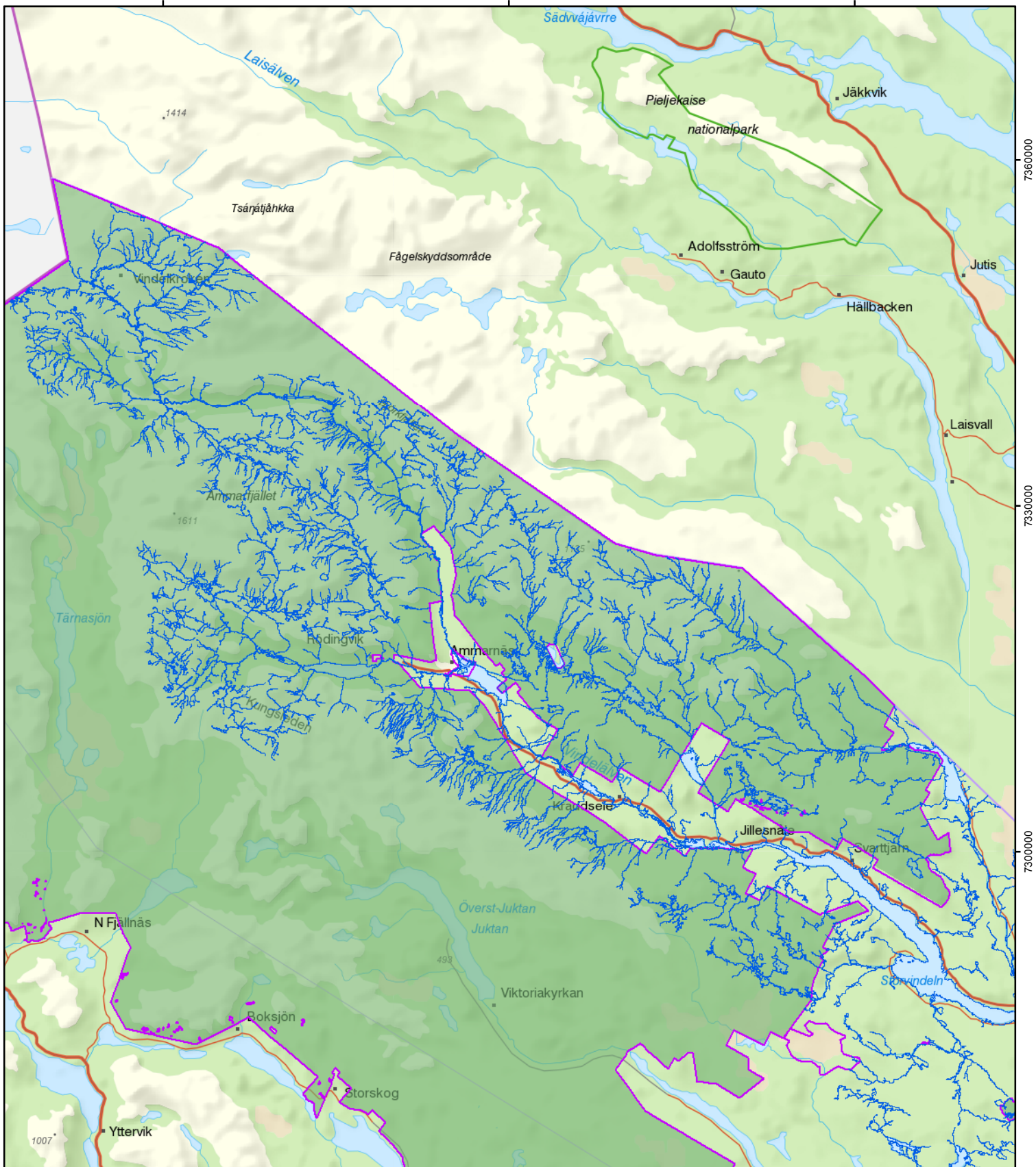
Scale: 1:1 300 000 for A4 prints



530000

560000

590000



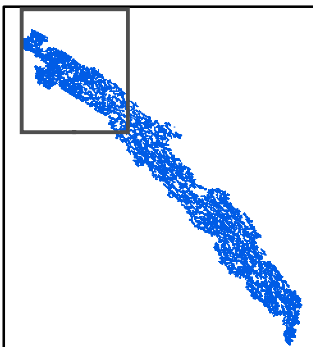
7360000

7300000

7300000

Vindelälven


Detailed map 1 of 4




Legend

 Ramsar site

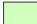
The whole Ramsar site is part of the Natura 2000 network. All Natura 2000 sites concerned except one is shown on the map. The one that is not shown; Vindelälven, coincides with the remaining part of the Ramsar site and is excluded on this map for cartographic reasons.


 Natura 2000 sites that overlap the Ramsar site or have adjacent land areas.

 Protected area (> 10 hectares)

 Mire

 Water

 Forest

 Open area

Data sources

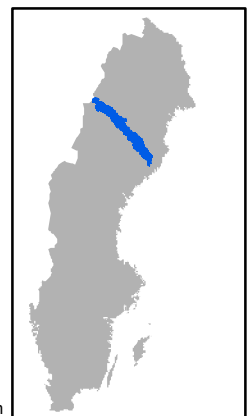
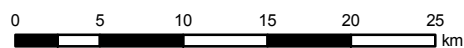
Topographic background map: ©Lantmäteriet
 dnr:109-2011/3027
 Ramsar sites vector data: ©Naturvårdsverket Sep 2012
 Natura 2000 vector data: ©Naturvårdsverket Sep 2012
 Nature reserves vector data: ©Naturvårdsverket Aug 2012

This map was produced by Metria AB October 2012.
 ©2012 Naturvårdsverket

Cartographic information

Coordinate system: SWEREF99
 Projection: Transverse Mercator
 Ramsar site coordinates: 61°56'N 15°30'E (NW corner)
 61°46'N 16°09'E (SE corner)

Scale: 1:450 000 for A4 prints



590000

620000

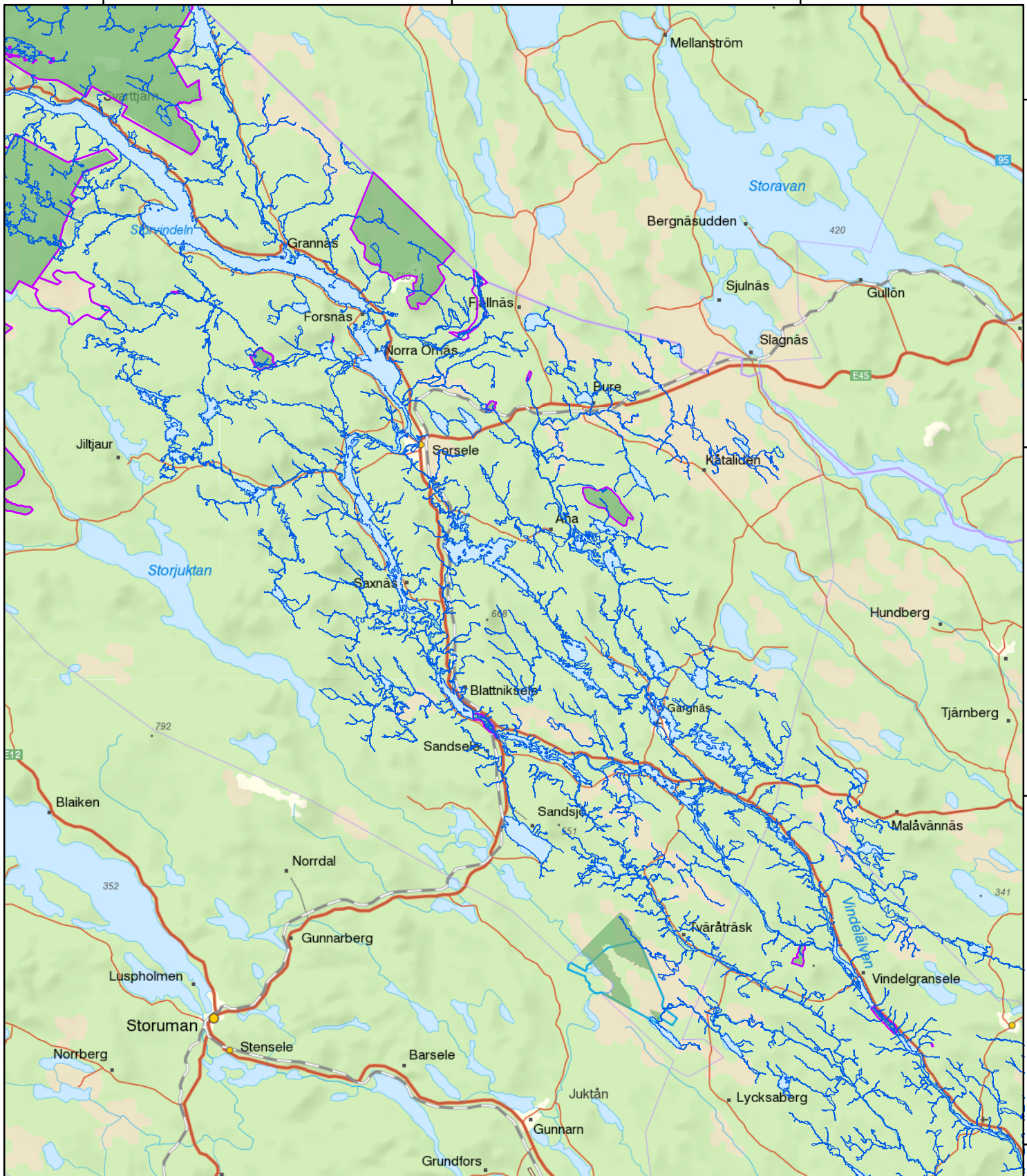
650000

730000

720000

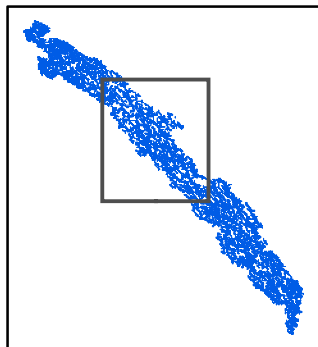
724000

7210000



Vindelälven

Detailed map 2 of 4



Legend

- Ramsar site
- Natura 2000 sites that overlap the Ramsar site or have adjacent land areas.
- Protected area (> 10 hectares)
- Mire
- Water
- Forest
- Open area
- Military firing range

The whole Ramsar site is part of the Natura 2000 network. All Natura 2000 sites concerned except one is shown on the map. The one that is not shown; Vindelälven, coincides with the remaining part of the Ramsar site and is excluded on this map for cartographic reasons.

Data sources

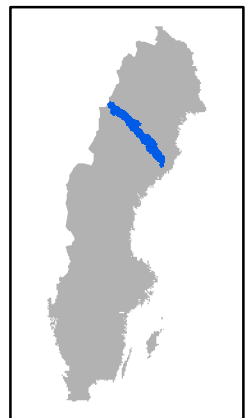
- Topographic background map: ©Lantmäteriet dnr:109-2011/3027
- Ramsar sites vector data: ©Naturvårdsverket Sep 2012
- Natura 2000 vector data: ©Naturvårdsverket Sep 2012
- Nature reserves vector data: ©Naturvårdsverket Aug 2012

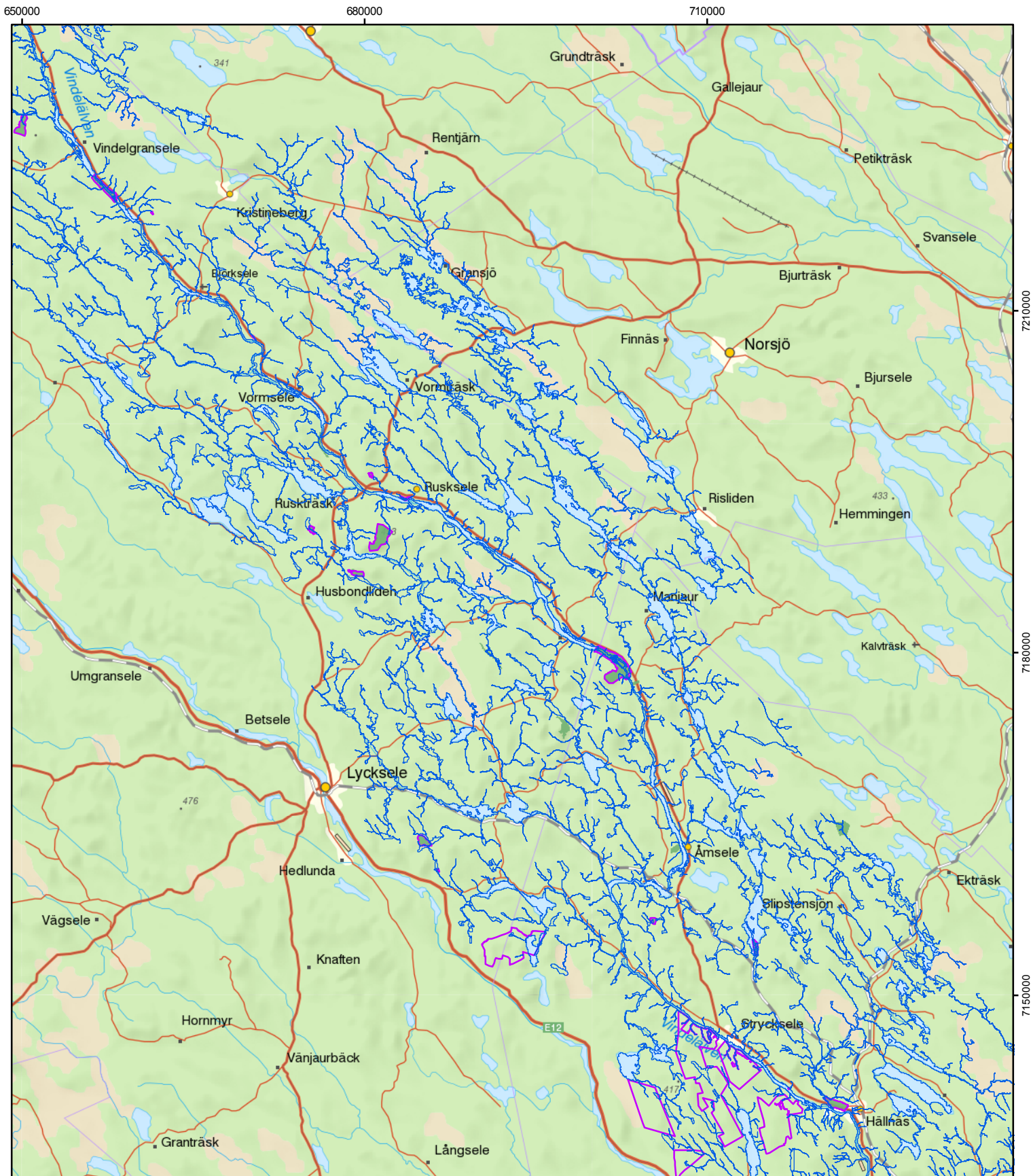
This map was produced by Metria AB October 2012.
©2012 Naturvårdsverket

Cartographic information

Coordinate system: SWEREF99
Projection: Transverse Mercator
Ramsar site coordinates: 61°56'N 15°30'E (NW corner)
61°46'N 16°09'E (SE corner)

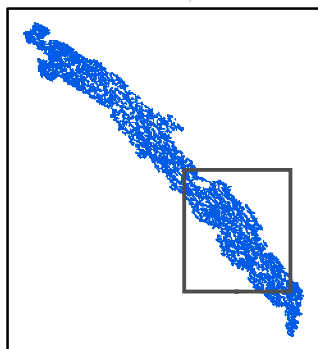
Scale: 1:450 000 for A4 prints





Vindelälven


Detailed map 3 of 4




Legend

 Ramsar site

The whole Ramsar site is part of the Natura 2000 network. All Natura 2000 sites concerned except one is shown on the map. The one that is not shown; Vindelälven, coincides with the remaining part of the Ramsar site and is excluded on this map for cartographic reasons.

 Natura 2000 sites that overlap the Ramsar site or have adjacent land areas.

 Protected area (> 10 hectares)

 Mire

 Water

 Forest

 Open area

Data sources

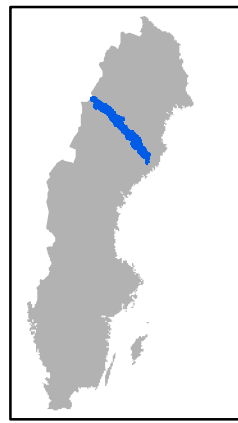
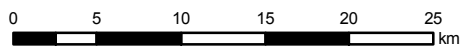
Topographic background map: ©Lantmäteriet dnr:109-2011/3027
 Ramsar sites vector data: ©Naturvårdsverket Sep 2012
 Natura 2000 vector data: ©Naturvårdsverket Sep 2012
 Nature reserves vector data: ©Naturvårdsverket Aug 2012

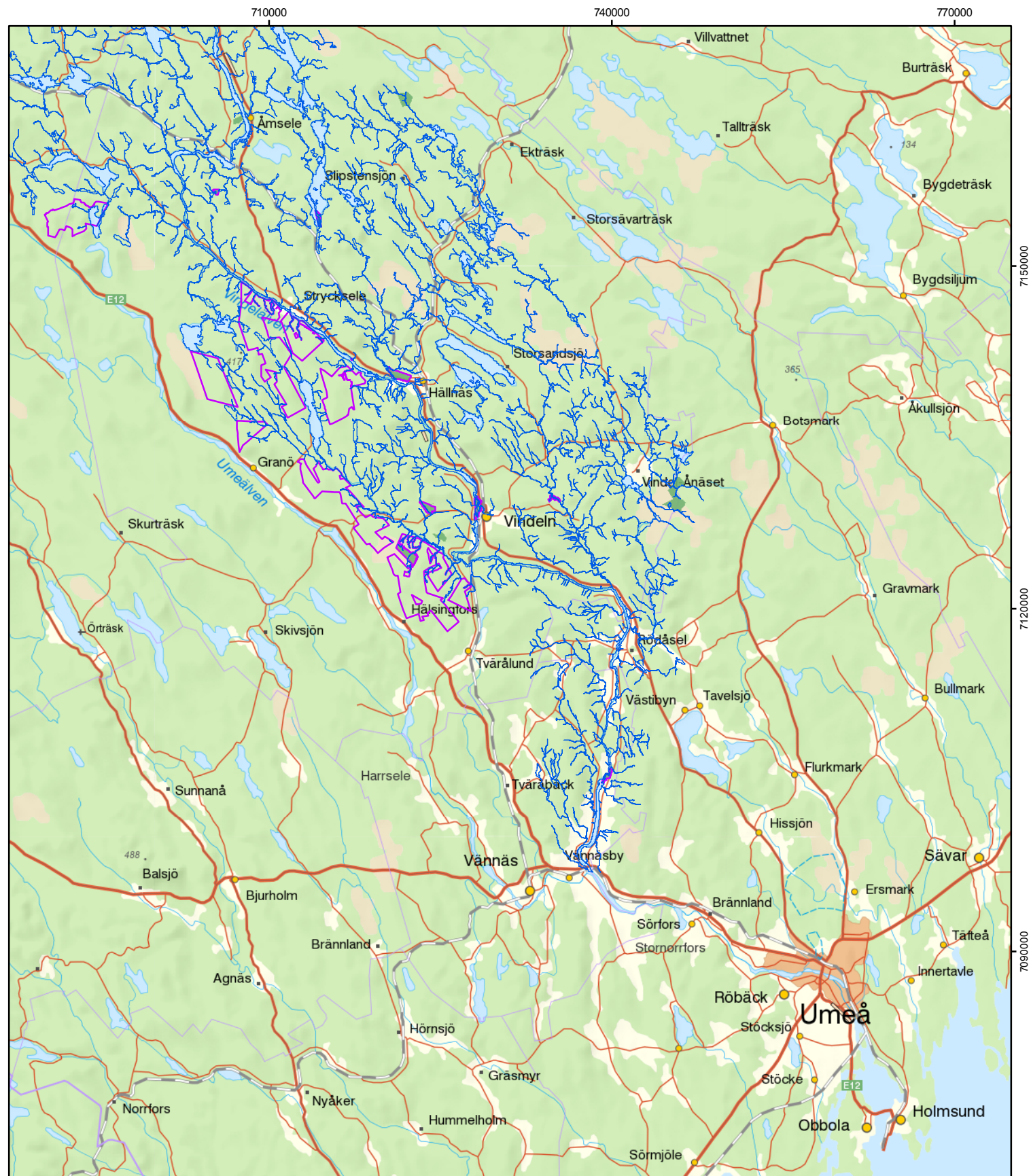
This map was produced by Metria AB October 2012.
 ©2012 Naturvårdsverket

Cartographic information

Coordinate system: SWEREF99
 Projection: Transverse Mercator
 Ramsar site coordinates: 61°56'N 15°30'E (NW corner)
 61°46'N 16°09'E (SE corner)

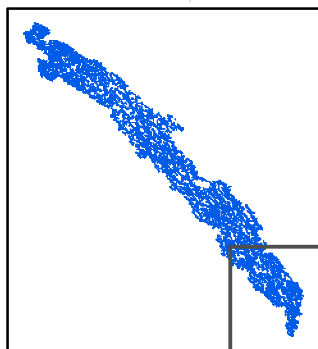
Scale: 1:450 000 for A4 prints






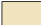

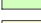



Vindelälven

Detailed map 4 of 4



Legend

-  Ramsar site
-  Natura 2000 sites that overlap the Ramsar site or have adjacent land areas.
-  Protected area (> 10 hectares)
-  Mire
-  Water
-  Forest
-  Open area

The whole Ramsar site is part of the Natura 2000 network. All Natura 2000 sites concerned except one is shown on the map. The one that is not shown; Vindelälven, coincides with the remaining part of the Ramsar site and is excluded on this map for cartographic reasons.

Data sources

- Topographic background map: ©Lantmäteriet dnr:109-2011/3027
- Ramsar sites vector data: ©Naturvårdsverket Sep 2012
- Natura 2000 vector data: ©Naturvårdsverket Sep 2012
- Nature reserves vector data: ©Naturvårdsverket Aug 2012

This map was produced by Metria AB October 2012.
©2012 Naturvårdsverket

Cartographic information

Coordinate system: SWEREF99
Projection: Transverse Mercator
Ramsar site coordinates: 61°56'N 15°30'E (NW corner)
61°46'N 16°09'E (SE corner)

Scale: 1:450 000 for A4 prints

