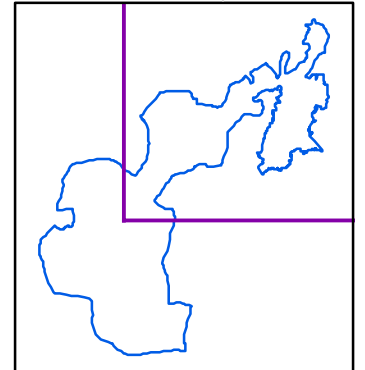


Tönnersjöheden - Årshultsmyren

Northeast part



Legend

- | | | | |
|--|------------------|--|-----------|
| | Ramsar site | | Mire |
| | Protected area | | Open area |
| | Natura 2000 site | | Water |
| | Built-up area | | Forest |

Data sources

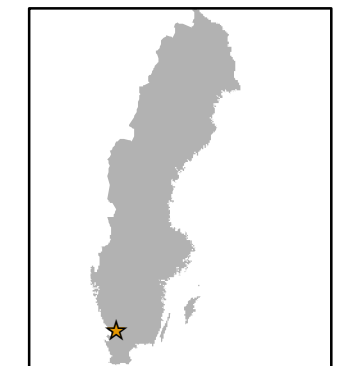
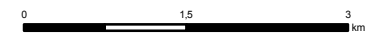
Topographic background map: ©Lantmäteriet dnr:109-2011/3027
 Ramsar sites vector data: ©Naturvårdsverket Oct 2014
 Decision to be taken 2015
 Natura 2000 vector data: ©Naturvårdsverket Jan 2014
 Nature reserves vector data: ©Naturvårdsverket Oct 2014

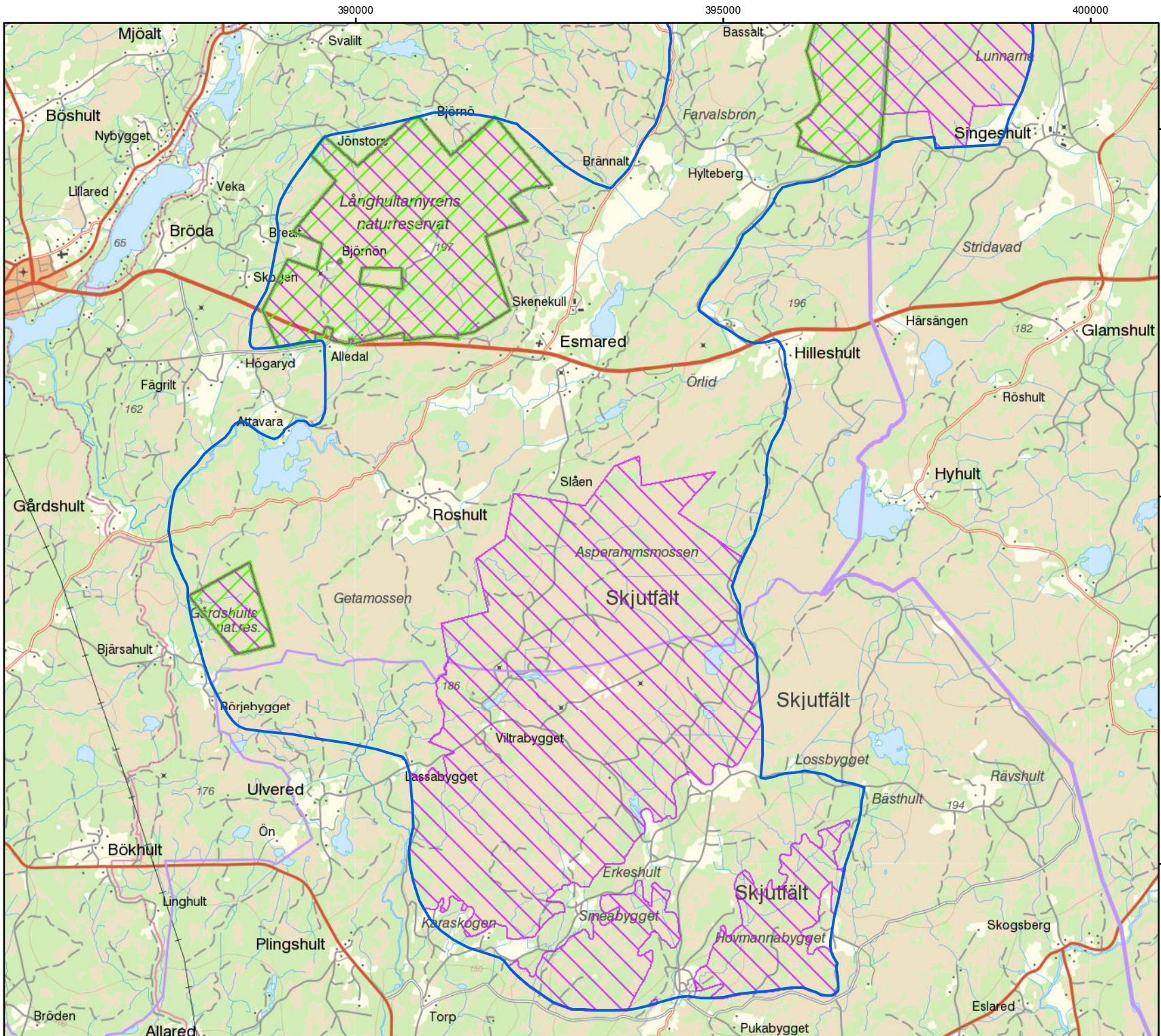
This map was produced by Metria AB Oct 2014.
 ©2014 Naturvårdsverket

Cartographic information

Coordinate system: SWEREF99
 Projection: Transverse Mercator
 Coordinates of Ramsar site: 56°46'N 13°22'E (Northeast part)

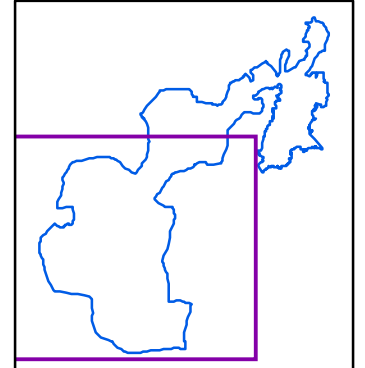
Scale: 1:70 000 for A4 prints





Tönnersjöheden - Årshultsmyrén

Southwest part



Legend

- | | |
|------------------|-----------|
| Ramsar site | Mire |
| Protected area | Open area |
| Natura 2000 site | Water |
| Built-up area | Forest |

Data sources

- Topographic background map: ©Lantmäteriet dnr:109-2011/3027
 Ramsar sites vector data: ©Naturvårdsverket Oct 2014 Decision to be taken 2015
 Natura 2000 vector data: ©Naturvårdsverket Jan 2014
 Nature reserves vector data: ©Naturvårdsverket Oct 2014

This map was produced by Metria AB Oct 2014.
 ©2014 Naturvårdsverket

Cartographic information

Coordinate system: SWEREF99
 Projection: Transverse Mercator
 Coordinates of Ramsar site: 56°41'N 13°14'E (Southwest part)

Scale: 1:70 000 for A4 prints

