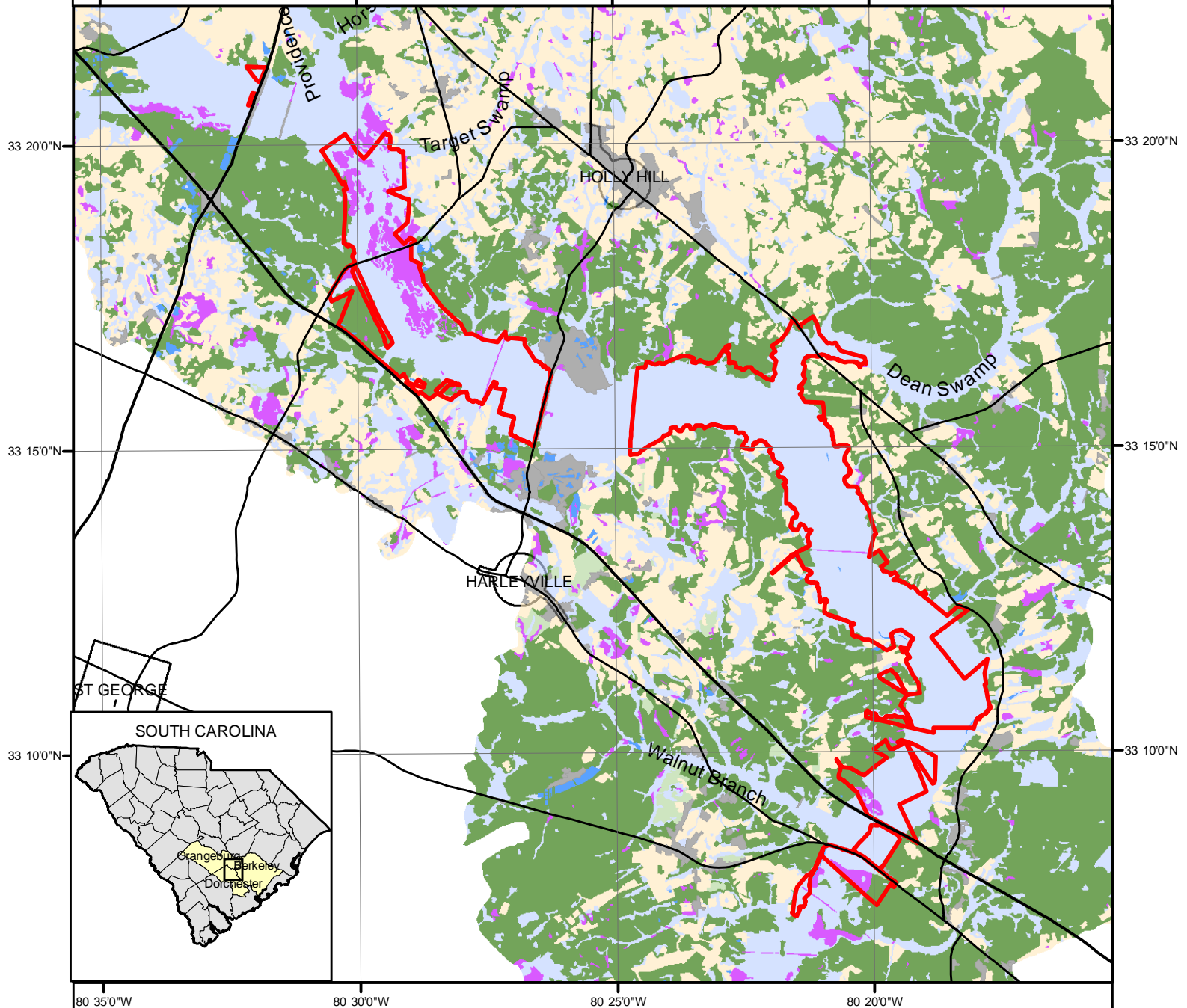


Ramsar Site: Francis Beidler Forest  
Landuse Analysis  
Located in Four Holes Swamp, Edisto River Basin, Dorchester,  
Berkeley and Orangeburg Counties,  
South Carolina, USA



Ramsar Site: Francis Beidler Forest 6,438 HA

Latitude: 33° 15' 48.84"N Longitude: 80° 22' 30.15"W

Land Use	Hectares
Forested Wetlands	5,232
Upland Forest, Evergreen, Deciduous and Mixed	649
Scrub-Brush	6
Non-Forested Wetlands	495
Cropland/Pasture	34
Open Water	9
Transportation and Utility	13
<b>TOTAL HECTARES</b>	<b>6,438</b>

