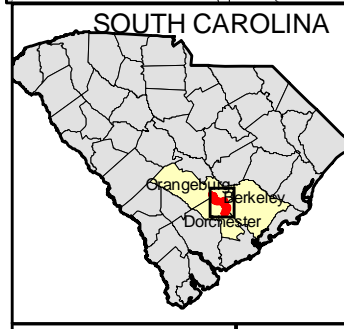
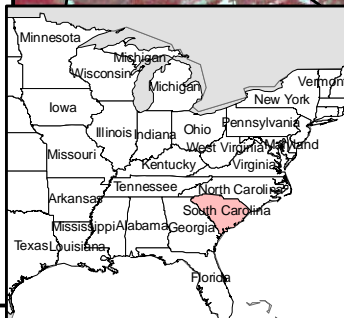
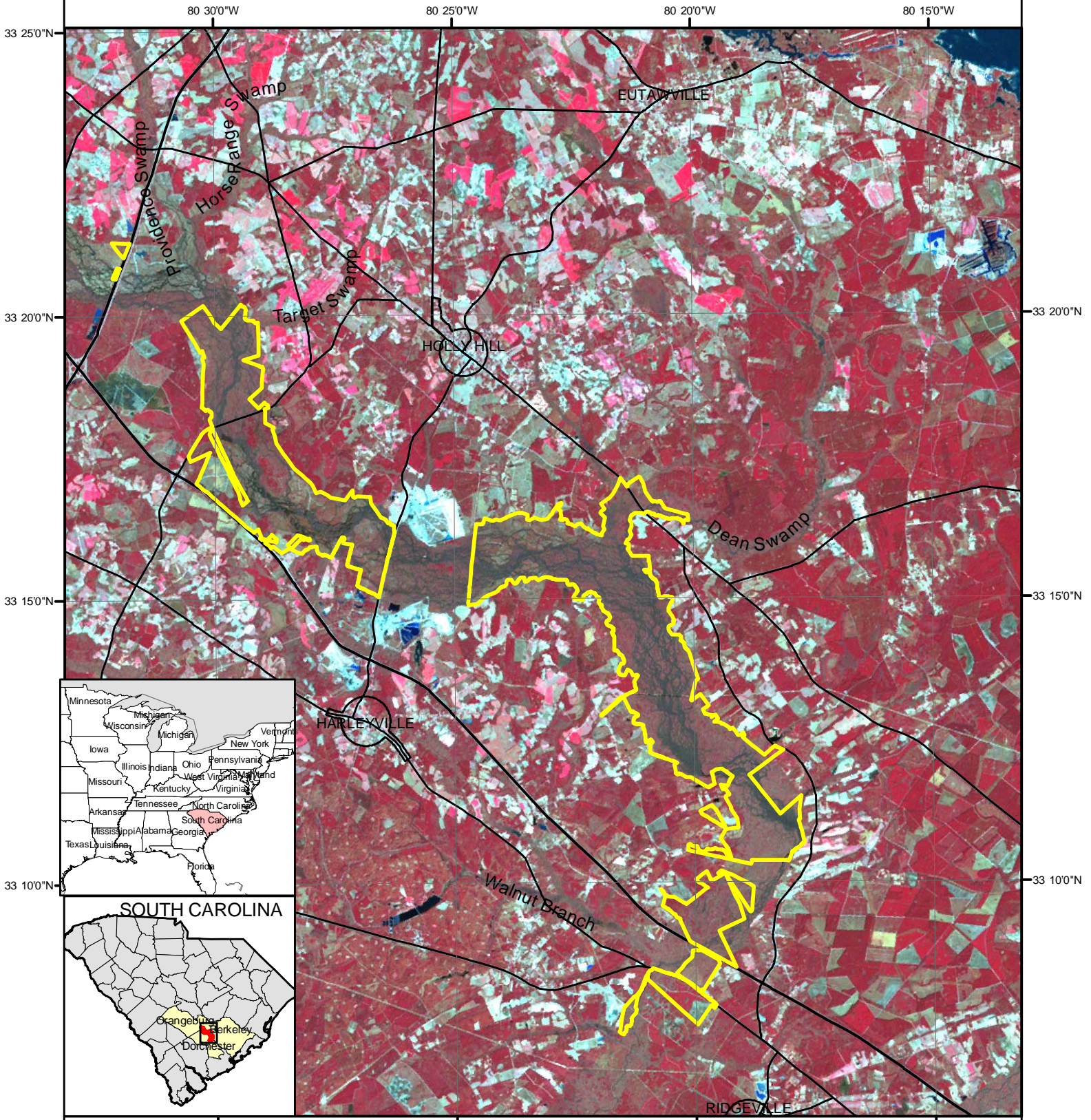

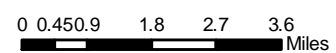


Ramsar Site: Francis Beidler Forest  
 Located in Four Holes Swamp, Edisto River Basin,  
 Dorchester, Berkeley and Orangeburg Counties,  
 South Carolina, USA



 Ramsar Site: Francis Beidler Forest 6,438 HA  
 Latitude: 33° 15' 48.84"N  
 Longitude: 80° 22' 30.15"W



Map produced by One Earth GIS, April, 2008, using LANDSAT Thematic Mapper satellite imagery from spring, 2002, and boundary data developed from county parcel data and other sources. Property boundaries are approximate and should only be used for planning purposes. Ramsar\_map\_site\_Dinge\_rev.mxd