



CENTRAL MARSHES RAMSAR SITE

Legend

Roads

- Hard /Paved
- Loose /Unpaved
- Railroad
- Governorate boundary
- - - District boundary
- - - Sub-district boundary
- ▭ Ramsar boundary
- ▨ Oil fields
- Major River
- Minor River
- ∩∩∩ Embankment 712

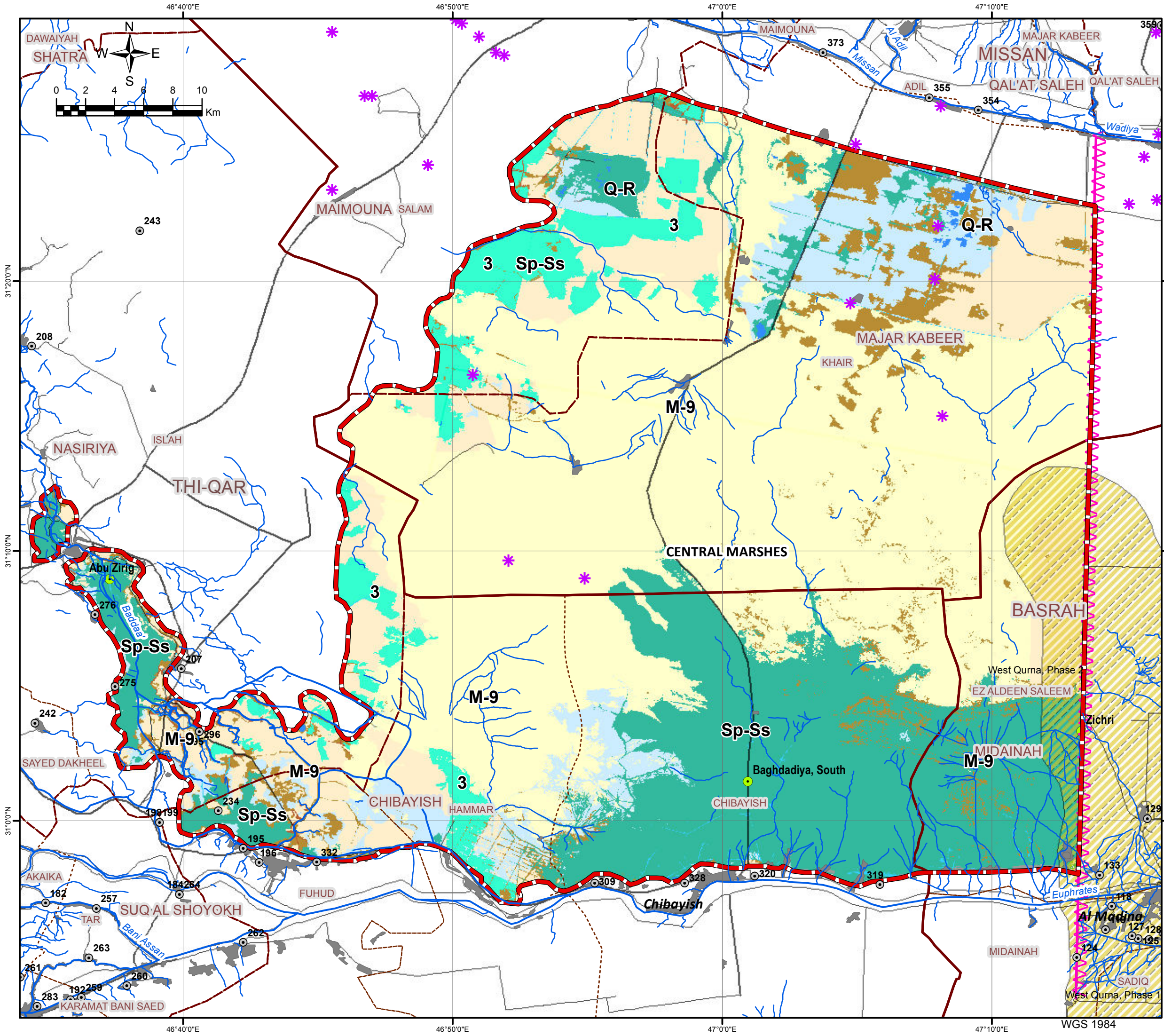
- ⊙ Villages
- * Archaeological sites
- Locations inside the marsh

Land Use

- Bare Areas
- Horticultures
- Irrigated Graminoid Crops
- Marshlands
- Natural Shrublands
- Palm Plantations
- Rice Fields
- Sandy Areas and Dunes
- Sparsely Vegetated Areas
- Urban and Industrial Areas
- Water Bodies
- Water Courses
- Waterlogged Areas

Wetland type

- Sp-Ss** Marshes
- Q-R** Water body
- M-9** Rivers/Streams
- 3** Irrigated land



WGS 1984