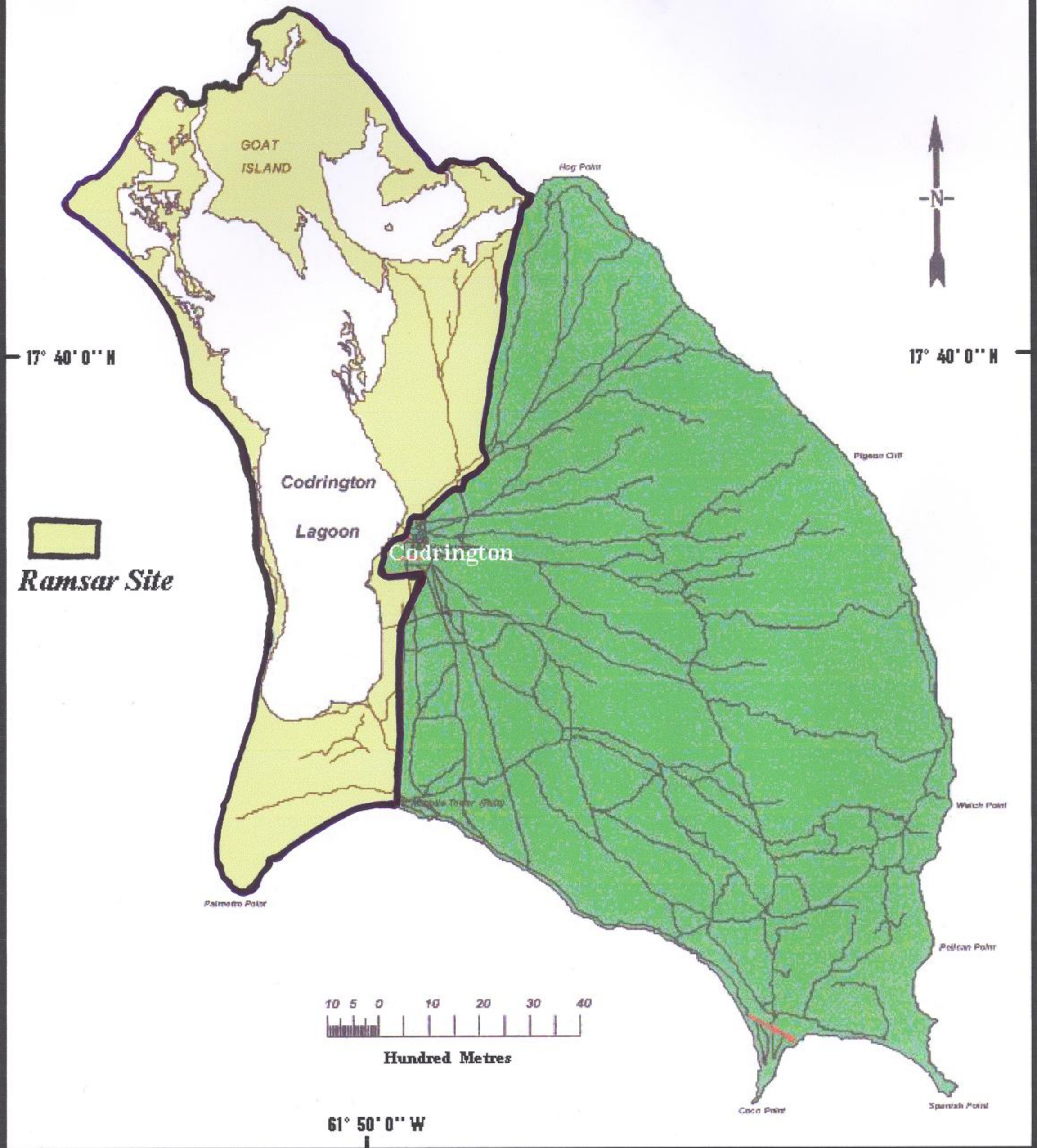


61° 50' 0" W

BARBUDA



GOAT ISLAND

Hog Point



17° 40' 0" N

17° 40' 0" N



Ramsar Site

Codrington

Lagoon

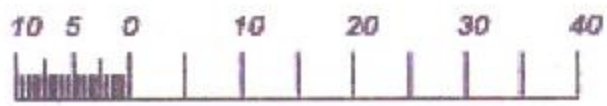
Codrington

Pigeon Cliff

Palmetto Point

Watch Point

Pelican Point



Hundred Metres

61° 50' 0" W

Cocca Point

Spanish Point