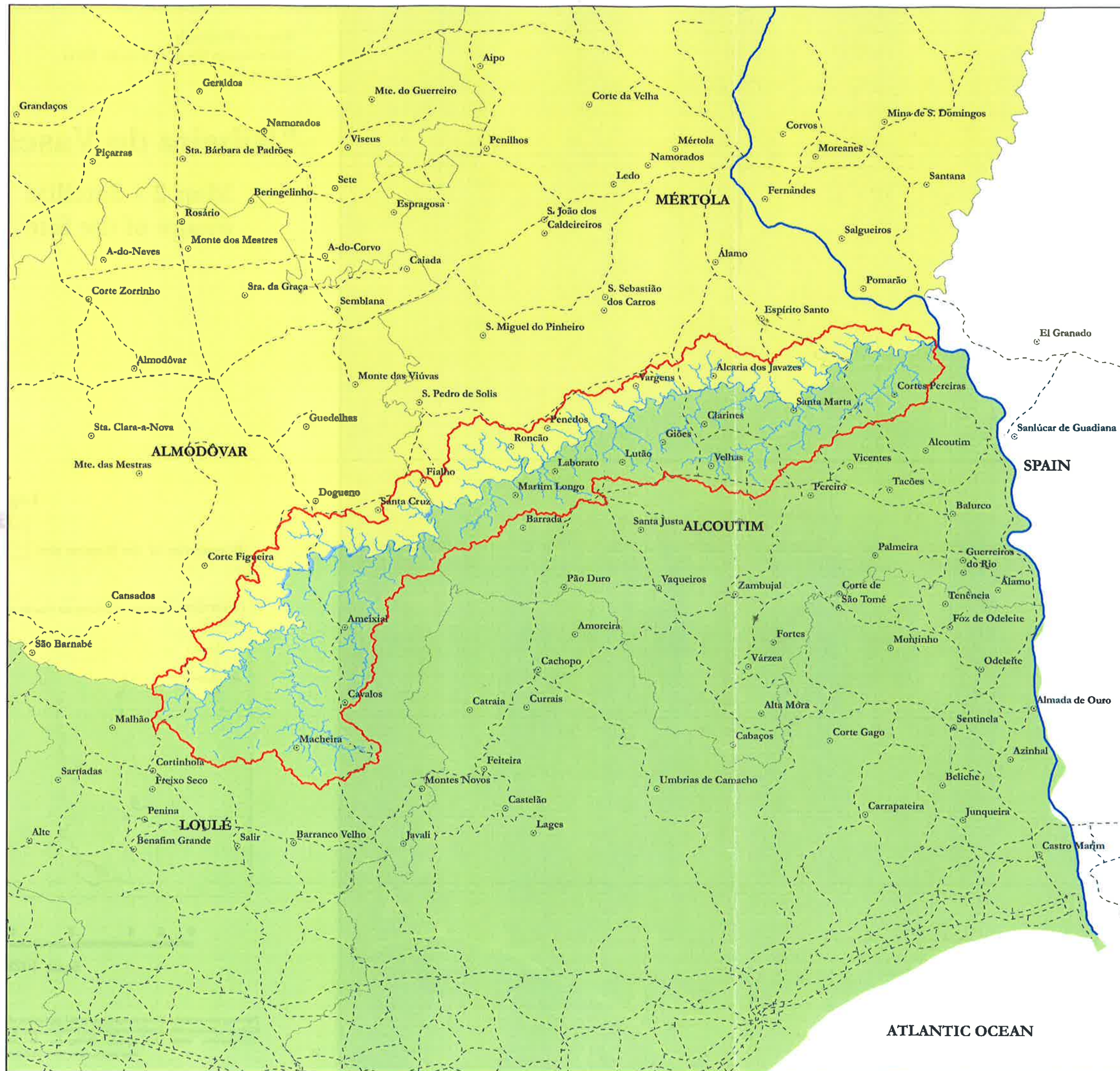


"Ribeira do Vascão"

Map 1 - General view of the Site



Legend

- Boundaries of the Ramsar site
- R. Vascão - Dry period
- R. Vascão - Normal period
- R. Vascão - Flood period
- Surface Runoff
- Guadiana River
- Locations
- Roads
- Municipalities
- District of Beja
- District of Faro

OVERVIEW: Location of Ribeira do Vascão in Portugal



Scale 1:125.000

This map was conceived as an integral part of the application of Vascão River as a Ramsar Site. Administrative limits and surface runoff by Agência Portuguesa do Ambiente.

Map produced by Joana Veríssimo, 2011.

"Ribeira do Vascão"

Map 2 - Satellite image of the Site



Legend

Boundaries of the Ramsar site



OVERVIEW: Location of Ribeira do Vascão in Portugal

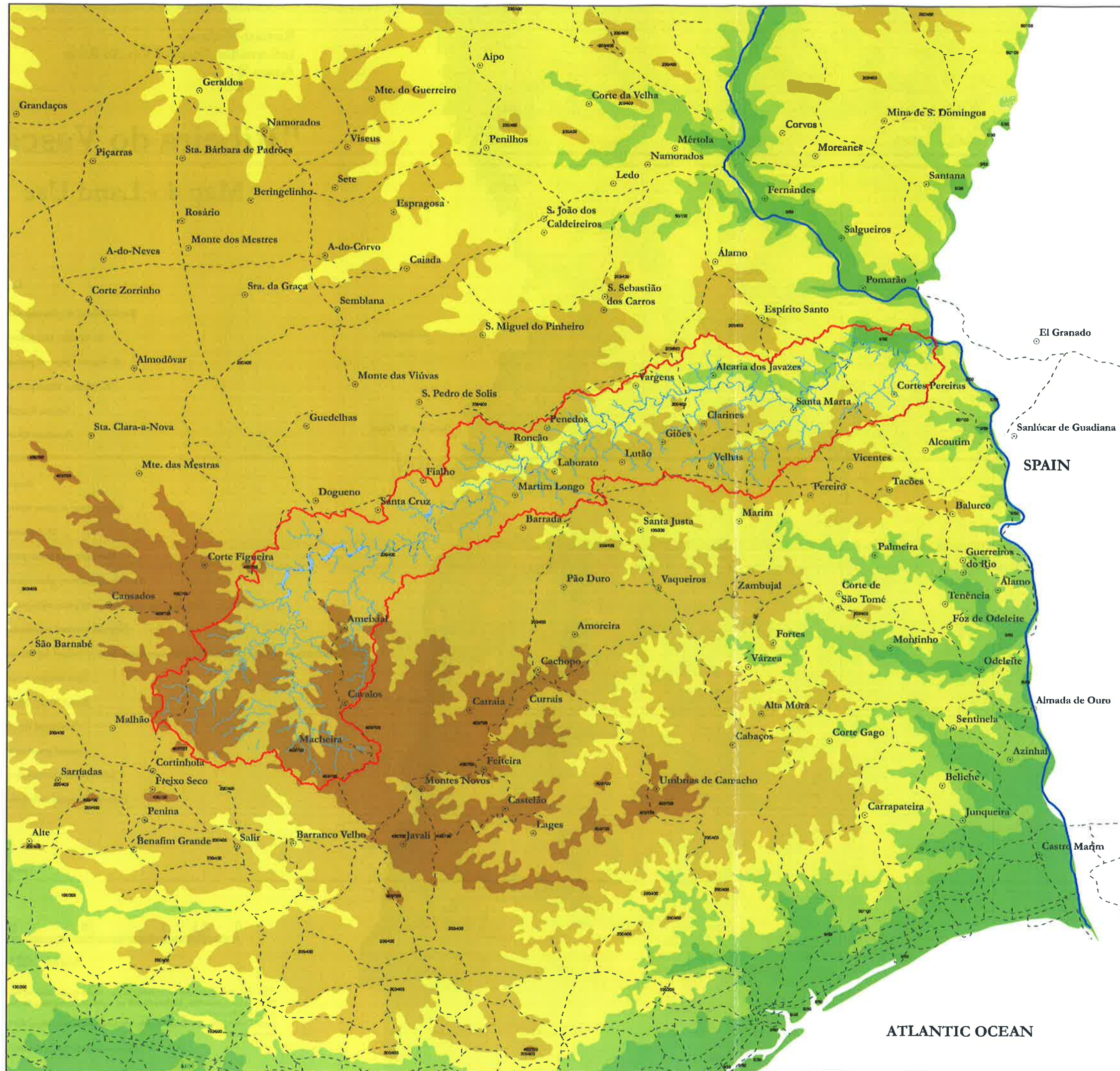


0 2 4 8 12 Km

Scale 1:125.000

"Ribeira do Vascão"

Map 3 - Hypsometry



SPAIN

ALMADA DE OURO

ATLANTIC OCEAN

- Legend**
- Boundaries of the Ramsar site □
 - R. Vascão - Dry period ■
 - R. Vascão - Normal period ■
 - R. Vascão - Flood period ■
 - Surface Runoff —
 - Guadiana River —
 - Locations ○
 - Roads - - -
 - Municipalities □
 - Hypsometry:**
 - 0 - 50 m ■
 - 50 - 100 m ■
 - 100 - 200 m ■
 - 200 - 400 m ■
 - 400 - 700 m ■
 - 700 - 1000 m ■



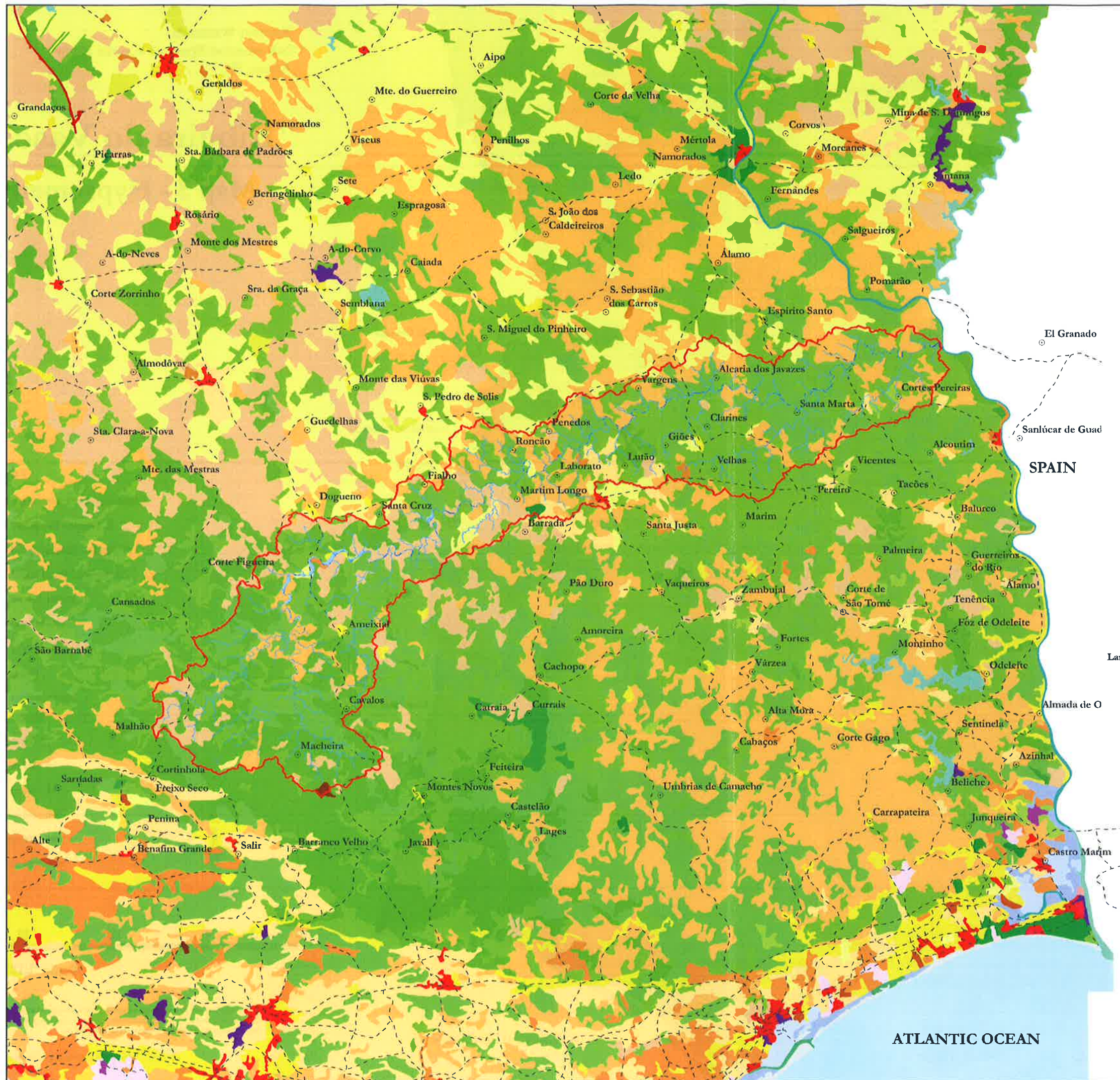
Scale 1:125.000

This map was conceived as an integral part of the application of Vascão River as a Ramsar Site. Administrative limits, surface runoff and hypsometry by Agência Portuguesa do Ambiente.

Map produced by Joana Veríssimo, 2011.

"Ribeira do Vascão"

Map 4 - Land Use



- Legend**
- Boundaries of the Ramsar site
 - R. Vascão - Dry period
 - R. Vascão - Normal period
 - R. Vascão - Flood period
 - Surface Runoff
 - Guadiana River
 - Locations
 - Roads
 - Discontinuous urban fabric
 - Dump sites
 - Non-irrigated arable land
 - Fruit trees and berry plantations
 - Annual crops associated with permanent crops
 - Complex cultivation patterns
 - Land principally occupied by agriculture, with significant areas of natural vegetation
 - Agro-forestry areas
 - Broad-leaved forest
 - Coniferous forest
 - Natural grasslands
 - Sclerophyllous vegetation
 - Transitional woodland-shrub

SPAIN



0 2,5 5 10 15 Km

Scale 1:125.000

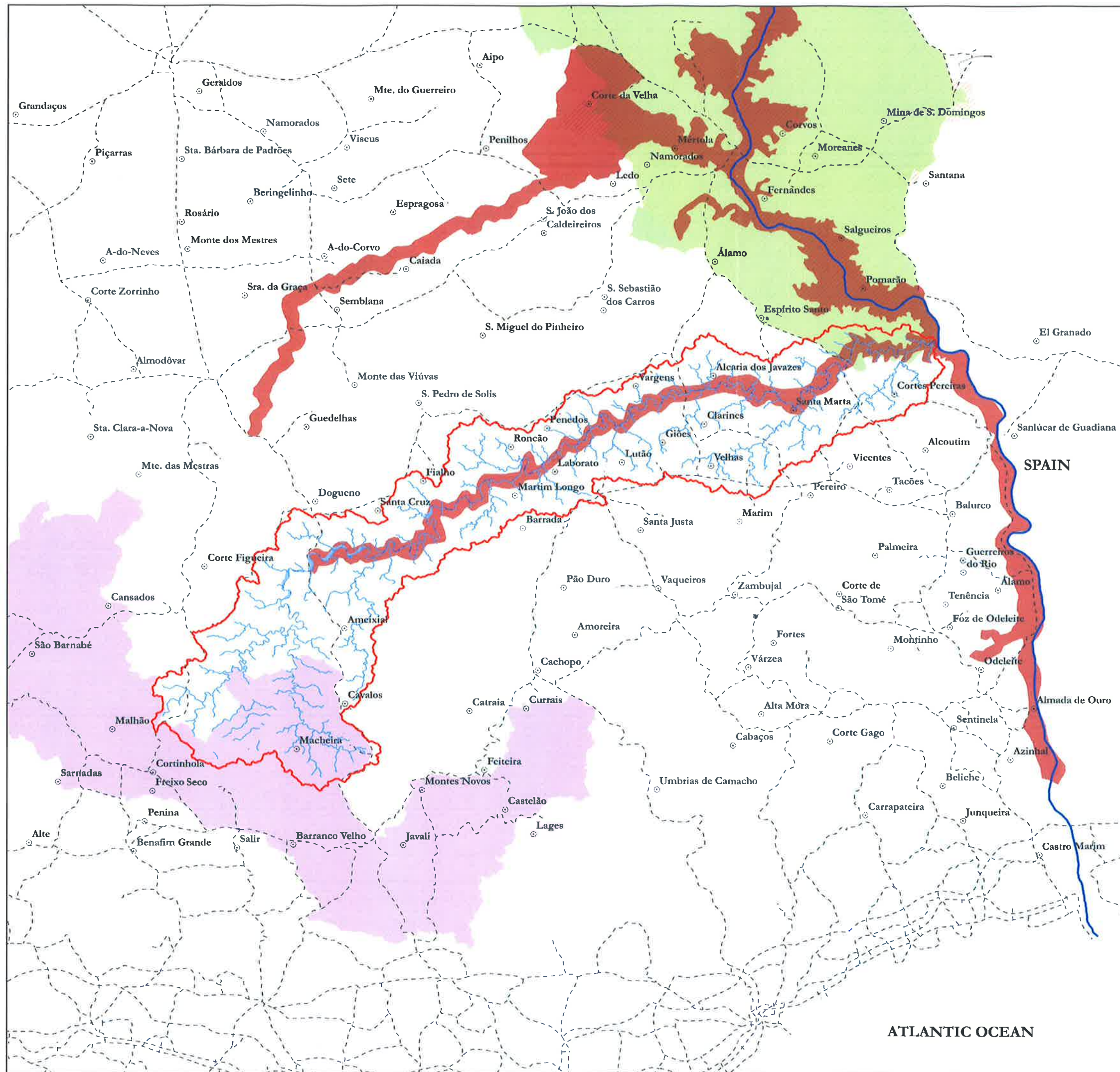
ATLANTIC OCEAN

This map was conceived as an integral part of the application of Vascão River as a Ramsar Site. Surface runoff by Agência Portuguesa do Ambiente; Land use by Corine Land Cover 2009. The Legend only contains information about the land inside the Site.

Map produced by Joana Verissimo, 2011.

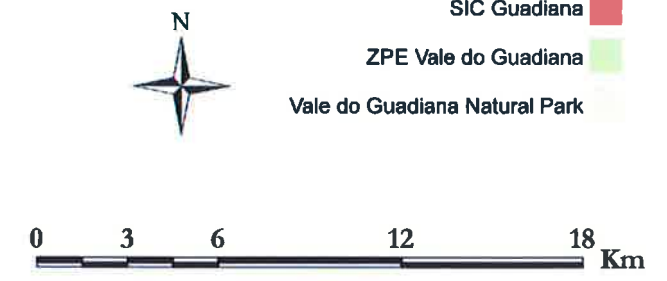
"Ribeira do Vascão"

Map 5 - Classified Areas



Legend

- Boundaries of the Ramsar site
- R. Vascão - Dry period
- R. Vascão - Normal period
- R. Vascão - Flood period
- Surface Runoff
- Guadiana River
- Locations
- Roads
- SIC and ZPE Caldeirão
- SIC Guadiana
- ZPE Vale do Guadiana
- Vale do Guadiana Natural Park



This map was conceived as an integral part of the application of Vascão River as a Ramsar Site. Surface runoff and Classified Areas by Agência Portuguesa do Ambiente.

Map produced by Joana Verissimo, 2011.

ATLANTIC OCEAN

SPAIN