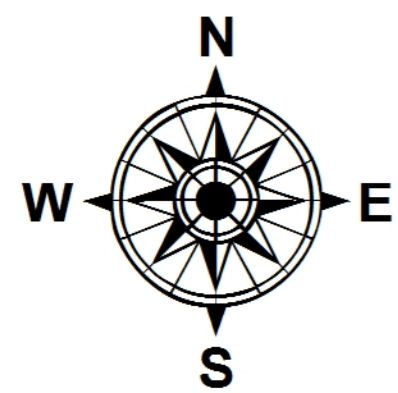
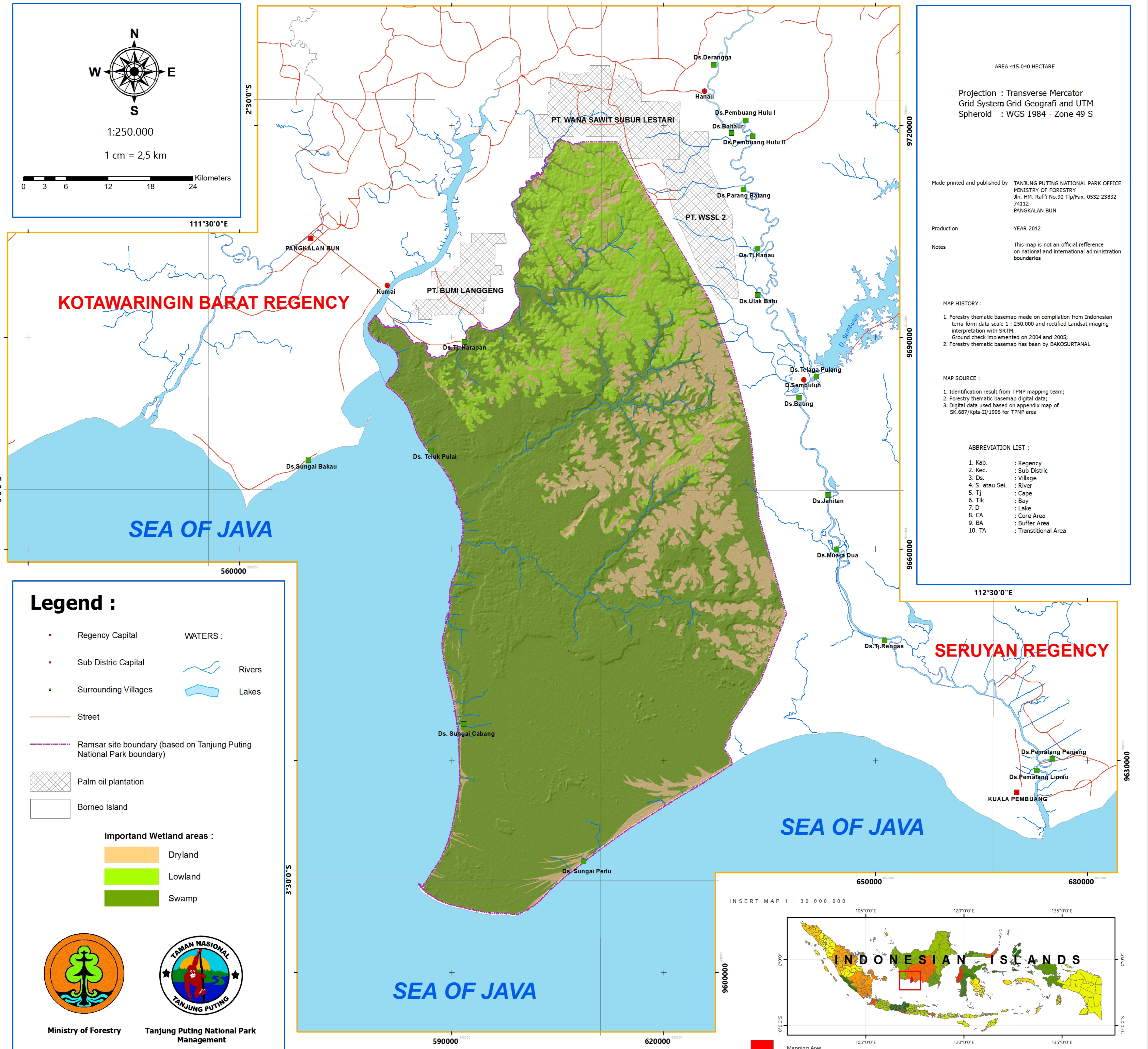
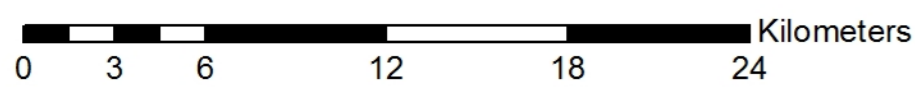


# MAP OF RAMSAR SITE BOUNDARY TANJUNG PUTING NATIONAL PARK



1:250.000

1 cm = 2,5 km



AREA 415.040 HECTARE

Projection : Transverse Mercator  
Grid System Grid Geografi and UTM  
Spheroid : WGS 1984 - Zone 49 S

Made printed and published by TANJUNG PUTING NATIONAL PARK OFFICE  
MINISTRY OF FORESTRY  
Jln. HM. Rafi No.90 Tlp/Fax. 0532-23832  
74112  
PANGKALAN BUN

Production YEAR 2012

Notes This map is not an official reference  
on national and international administration  
boundaries

#### MAP HISTORY :

1. Forestry thematic basemap made on compilation from Indonesian terra-form data scale 1 : 250.000 and rectified Landsat imaging interpretation with SRTM. Ground check implemented on 2004 and 2005;
2. Forestry thematic basemap has been by BAKOSURTANAL

#### MAP SOURCE :

1. Identification result from TPNP mapping team;
2. Forestry thematic basemap digital data;
3. Digital data used based on appendix map of SK.687/Kpts-II/1996 for TPNP area

#### ABBREVIATION LIST :

- |                 |                     |
|-----------------|---------------------|
| 1. Kab.         | : Regency           |
| 2. Kec.         | : Sub Distric       |
| 3. Ds.          | : Village           |
| 4. S. atau Sei. | : River             |
| 5. Tj           | : Cape              |
| 6. Tik          | : Bay               |
| 7. D            | : Lake              |
| 8. CA           | : Core Area         |
| 9. BA           | : Buffer Area       |
| 10. TA          | : Transitional Area |

## Legend :

- |   |          |
|---|----------|
| • Regency Capital   | WATERS : |
| • Sub Distric Capital   | Rivers   |
| • Surrounding Villages  | Lakes    |
| Street  |          |
| Ramsar site boundary (based on Tanjung Puting National Park boundary) |          |
| Palm oil plantation   |          |
| Borneo Island   |          |
| <b>Important Wetland areas :</b>                                      |          |
|   | Dryland  |
|   | Lowland  |
|   | Swamp    |



Ministry of Forestry



Tanjung Puting National Park  
Management

INSERT MAP 1 : 30.000.000



Mapping Area