

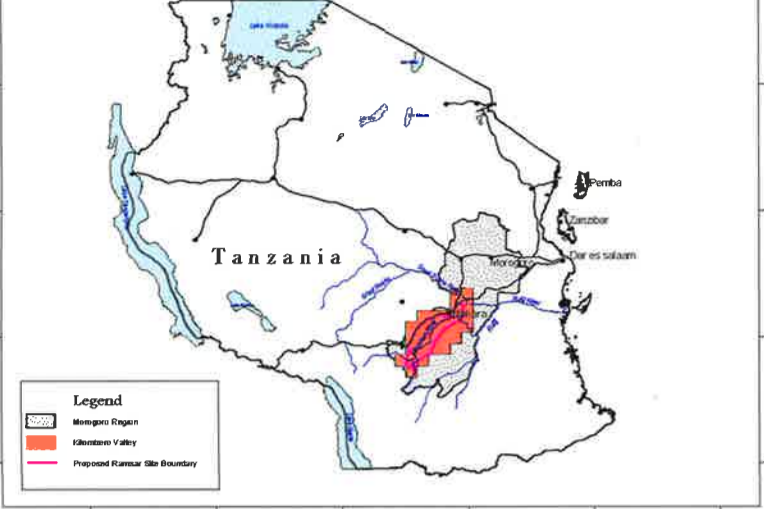
# KILOMBERO VALLEY - PROPOSED RAMSAR SITE

80000 100000 120000 140000 160000 180000 200000 220000 240000 260000 280000 300000 320000 340000

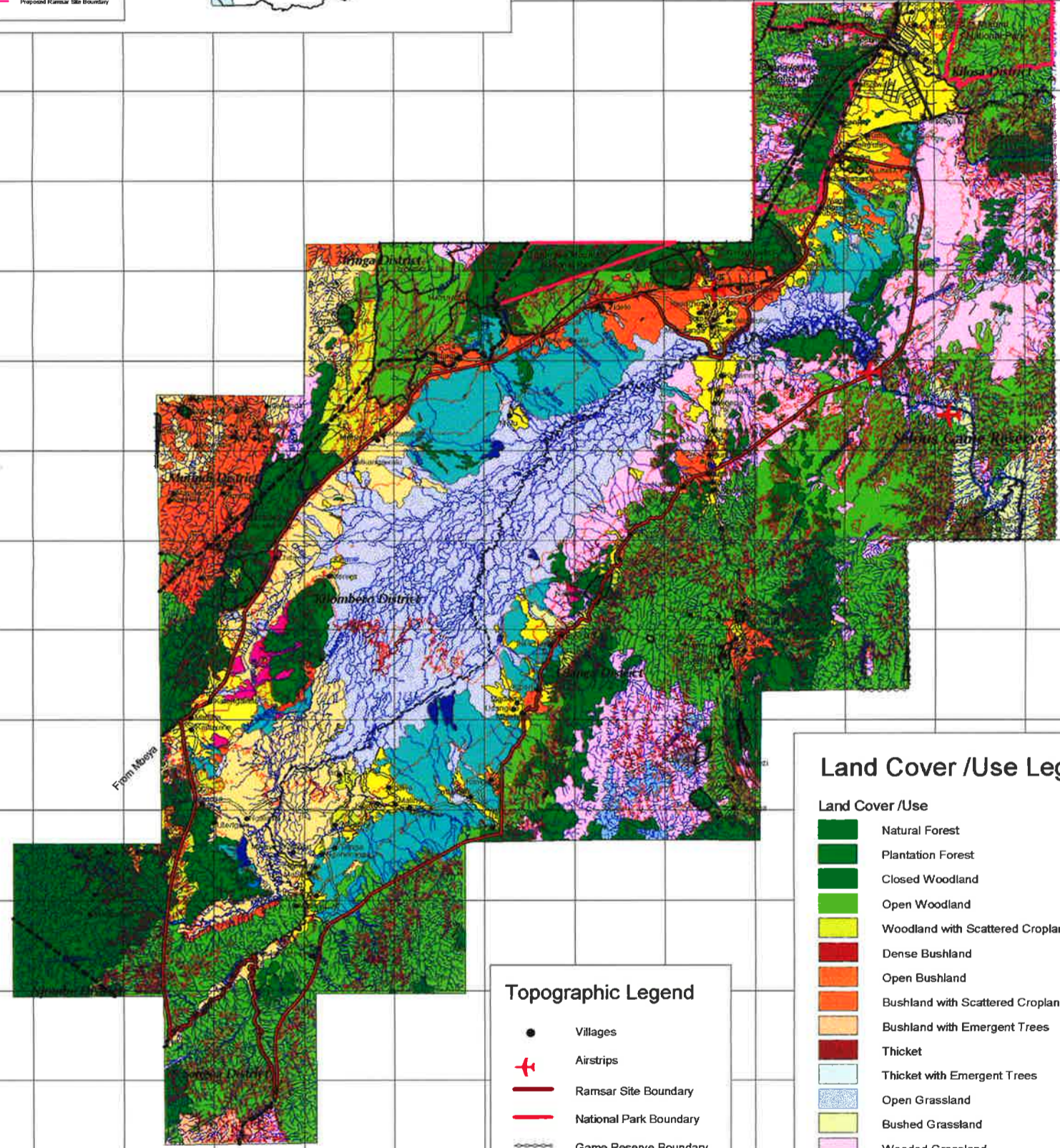
9260000  
9240000  
9220000  
9200000  
9180000  
9160000  
9140000  
9120000  
9100000  
9080000  
9060000  
9040000  
9020000  
9000000  
8980000  
8960000  
8940000  
8920000  
8900000  
8880000  
8860000

9260000  
9240000  
9220000  
9200000  
9180000  
9160000  
9140000  
9120000  
9100000  
9080000  
9060000  
9040000  
9020000  
9000000  
8980000  
8960000  
8940000  
8920000  
8900000  
8880000  
8860000

## INSERT SHOWING LOCATION OF KILOMBERO VALLEY



**Legend**  
 Morogoro Region  
 Kilombero Valley  
 Proposed Ramsar Site Boundary



## Land Cover /Use Legend

- | Land Cover /Use |                                       |
|-----------------|---------------------------------------|
| [Green]         | Natural Forest                        |
| [Dark Green]    | Plantation Forest                     |
| [Light Green]   | Closed Woodland                       |
| [Yellow-Green]  | Open Woodland                         |
| [Yellow]        | Woodland with Scattered Cropland      |
| [Red]           | Dense Bushland                        |
| [Orange]        | Open Bushland                         |
| [Light Orange]  | Bushland with Scattered Cropland      |
| [Light Yellow]  | Bushland with Emergent Trees          |
| [Dark Red]      | Thicket                               |
| [Light Blue]    | Thicket with Emergent Trees           |
| [Light Green]   | Open Grassland                        |
| [Light Yellow]  | Bushed Grassland                      |
| [Light Green]   | Wooded Grassland                      |
| [Light Yellow]  | Grassland with Scattered Cropland     |
| [Light Blue]    | Open Grassland Seasonally Inundated   |
| [Light Green]   | Bushed Grassland Seasonally Inundated |
| [Light Blue]    | Wooded Grassland Seasonally Inundated |
| [Yellow]        | Mixed Cropping                        |
| [Orange]        | Cultivation with Bushy Crops          |
| [Yellow]        | Cultivation with Herbaceous Crops     |
| [Yellow]        | Cultivation with Tree Crops           |
| [Blue]          | Inland Water                          |
| [Dark Blue]     | Swamp / Marsh                         |
| [Grey]          | Urban Areas                           |

## Topographic Legend

- |               |                         |
|---------------|-------------------------|
| [Black Dot]   | Villages                |
| [Red Cross]   | Airstrips               |
| [Red Line]    | Ramsar Site Boundary    |
| [Red Line]    | National Park Boundary  |
| [Dashed Line] | Game Reserve Boundary   |
| [Dashed Line] | Forest Reserve Boundary |
| [Dashed Line] | District Boundary       |
| [Dashed Line] | Regional Boundary       |
| [Red Line]    | Bound Surface Road      |
| [Grey Line]   | Loose Surface Road      |
| [Grey Line]   | Dry Weather Road        |
| [Grey Line]   | Motorable Track         |
| [Dashed Line] | Footpath                |
| [Black Line]  | Railway Line            |
| [Blue Line]   | Rivers                  |
| [Orange Line] | Contour                 |

From Mbeya

To Morogoro

0 25 50 100 Kilometers

# KILOMBERO VALLEY - PROPOSED RAMSAR SITE HYDROLOGICAL MAP

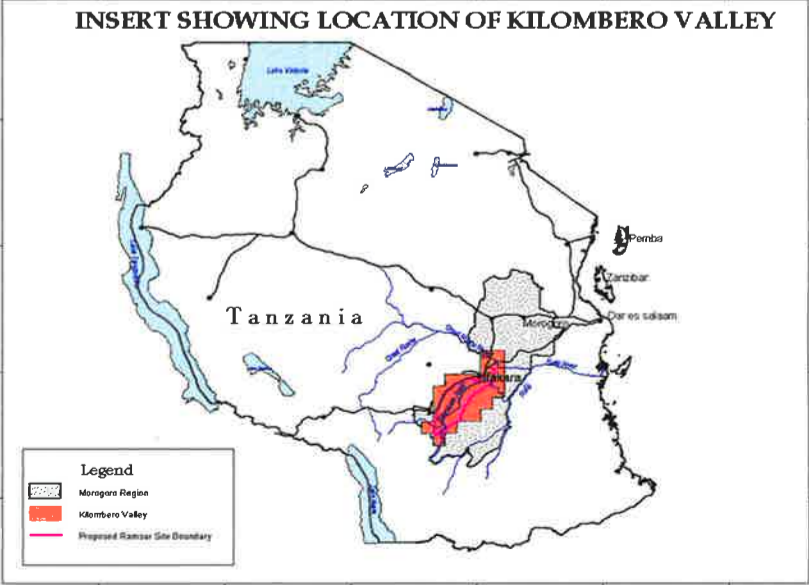
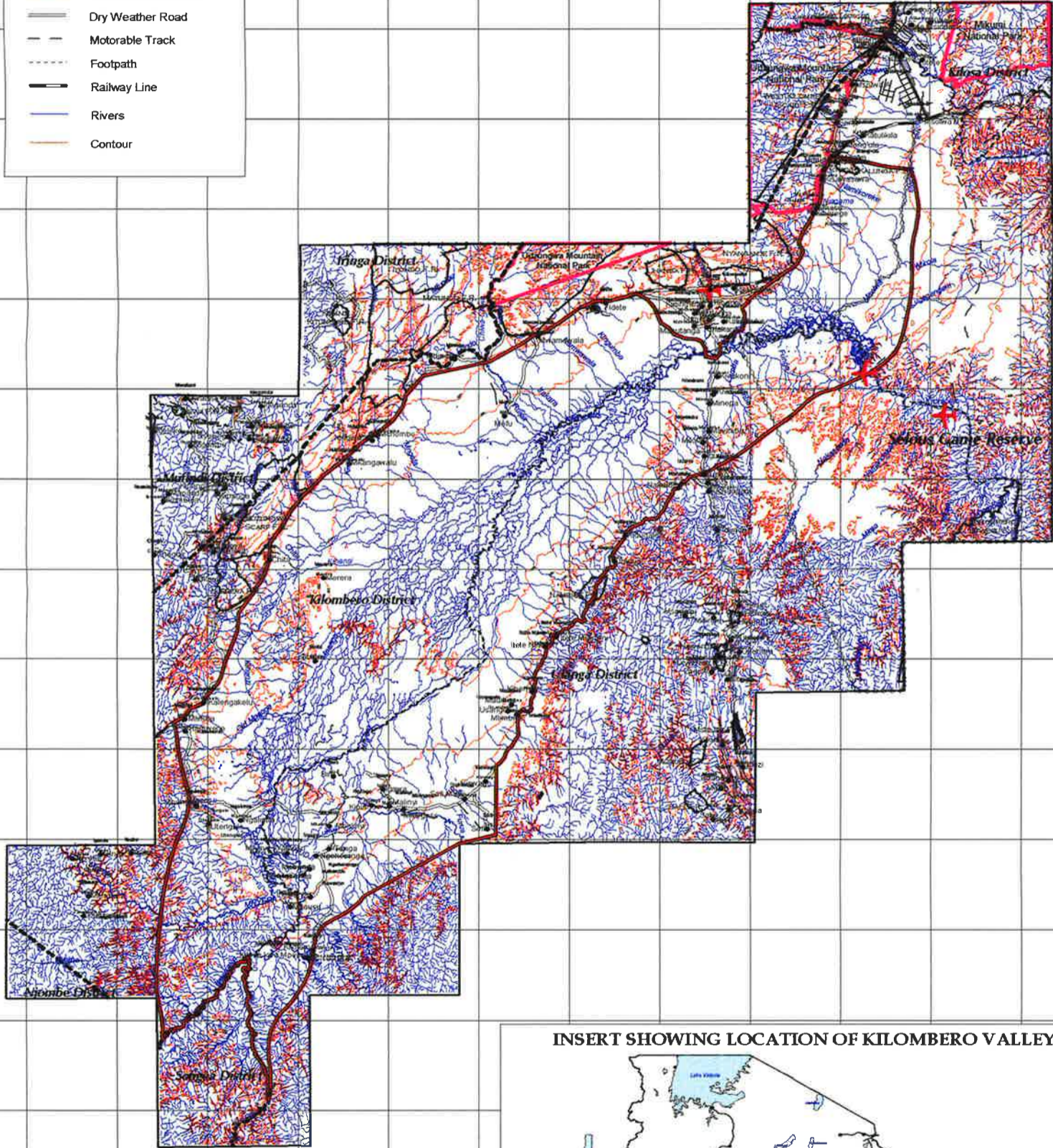
80000 100000 120000 140000 160000 180000 200000 220000 240000 260000 280000 300000 320000 340000

9260000  
9240000  
9220000  
9200000  
9180000  
9160000  
9140000  
9120000  
9100000  
9080000  
9060000  
9040000  
9020000  
9000000  
8980000  
8960000  
8940000  
8920000  
8900000  
8880000  
8860000

9260000  
9240000  
9220000  
9200000  
9180000  
9160000  
9140000  
9120000  
9100000  
9080000  
9060000  
9040000  
9020000  
9000000  
8980000  
8960000  
8940000  
8920000  
8900000  
8880000  
8860000

**Topographic Legend**

- Villages
- ✈ Airstrips
- ▬ Ramsar Site Boundary
- ▬ National Park Boundary
- ▬ Game Reserve Boundary
- ▬ Forest Reserve Boundary
- ▬ District Boundary
- ▬ Regional Boundary
- ▬ Bound Surface Road
- ▬ Loose Surface Road
- ▬ Dry Weather Road
- ▬ Motorable Track
- ▬ Footpath
- ▬ Railway Line
- ▬ Rivers
- ▬ Contour



0 25 50 100 Kilometers