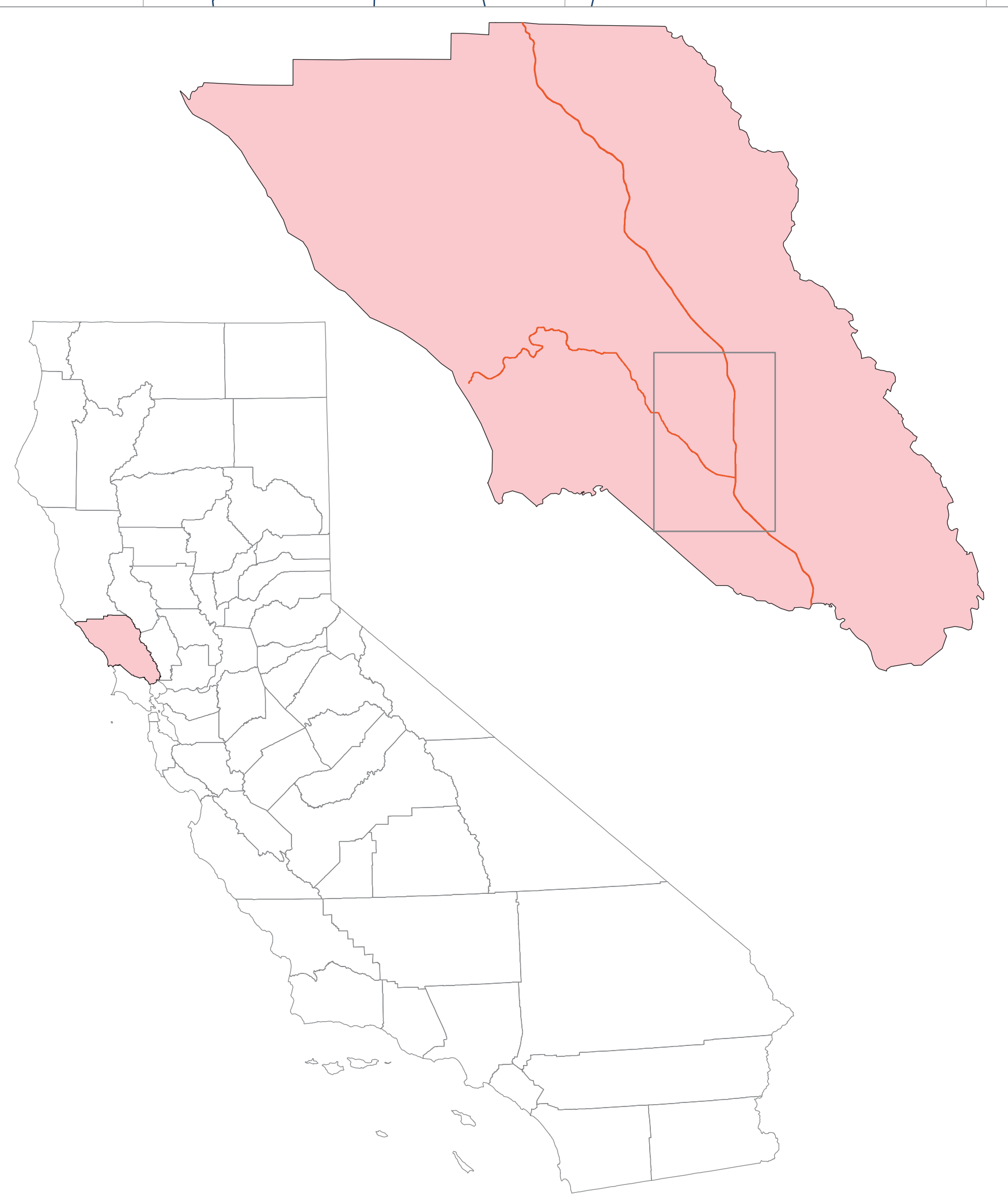
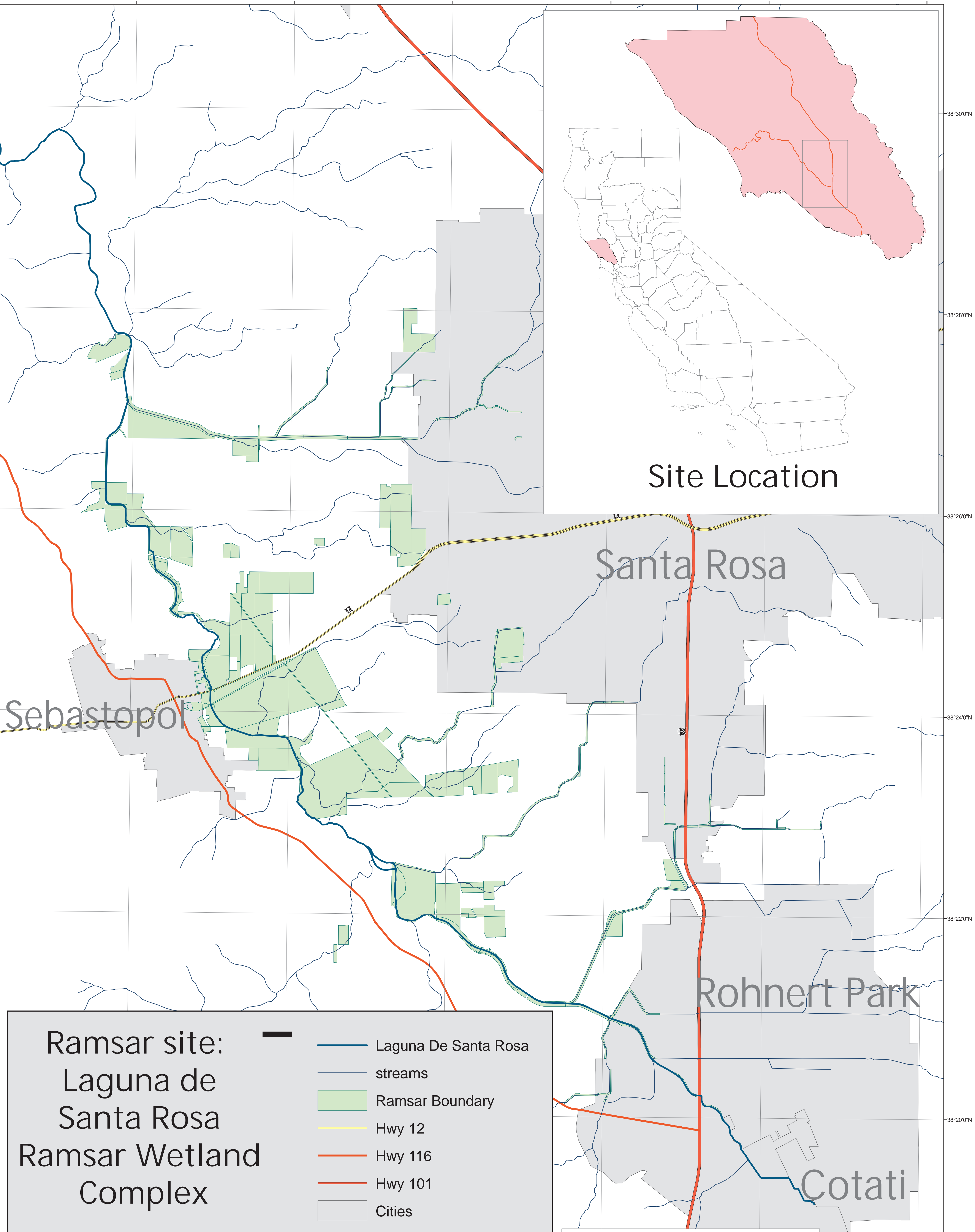






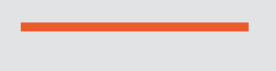
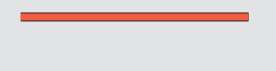
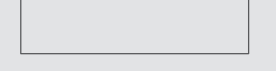
122°50'0"W 122°48'0"W 122°46'0"W 122°44'0"W 122°42'0"W 122°40'0"W



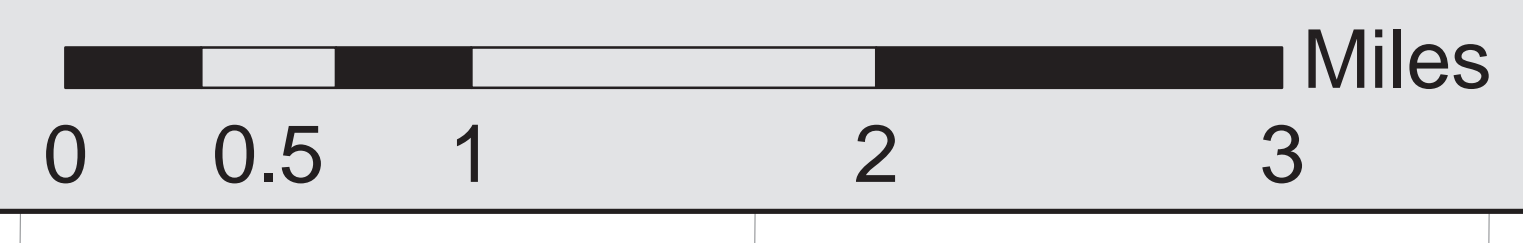
Site Location



**Ramsar site:
Laguna de
Santa Rosa
Ramsar Wetland
Complex**

-  Laguna De Santa Rosa
-  streams
-  Ramsar Boundary
-  Hwy 12
-  Hwy 116
-  Hwy 101
-  Cities

The Laguna de Santa Rosa Wetland Complex area includes an array of public parcels under a variety of conservation designations (Department of Fish and Game wildlife areas, conservation or mitigation banks, public parcels with conservation easements, parcels directly owned by conservation organizations, Sonoma County Water Agency (mainly applies to waterways & riparian zones) or other resource managers). The area also includes several properties in private ownership with or without conservation easements in place. We overlaid several GIS layers reflecting high biotic and conservation value in order to determine this site delineation.



2009 © Laguna de Santa Rosa Foundation
 Cartography: Christina Sloop
 Map ID: LdSR 700-A
 Geographic Coordinate System:
 California State Plain FIPS code 402
 Datum:
 North American 1983 (NAD 83)

38°30'0"N
38°28'0"N
38°26'0"N
38°24'0"N
38°22'0"N
38°20'0"N
38°18'0"N