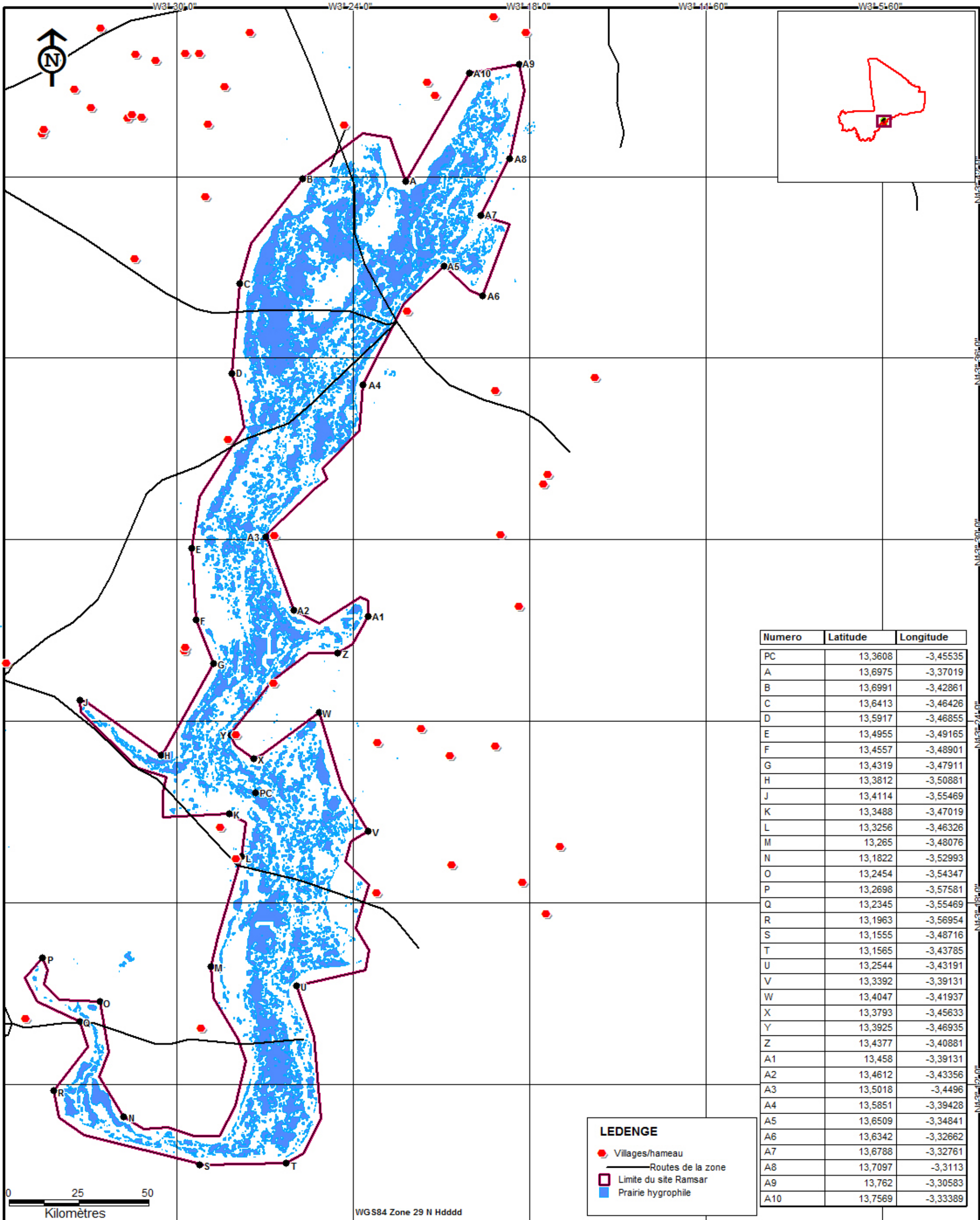


CARTE DE LOCALISATION DE LA PLAINE INONDABLE DU SOUROU (REGION DE MOPTI) REPUBLICQUE DU MALI

Superficie: 56500 HA, Perimètre: 250,2 km



Numero	Latitude	Longitude
PC	13,3608	-3,45535
A	13,6975	-3,37019
B	13,6991	-3,42861
C	13,6413	-3,46426
D	13,5917	-3,46855
E	13,4955	-3,49165
F	13,4557	-3,48901
G	13,4319	-3,47911
H	13,3812	-3,50881
J	13,4114	-3,55469
K	13,3488	-3,47019
L	13,3256	-3,46326
M	13,265	-3,48076
N	13,1822	-3,52993
O	13,2454	-3,54347
P	13,2698	-3,57581
Q	13,2345	-3,55469
R	13,1963	-3,56954
S	13,1555	-3,48716
T	13,1565	-3,43785
U	13,2544	-3,43191
V	13,3392	-3,39131
W	13,4047	-3,41937
X	13,3793	-3,45633
Y	13,3925	-3,46935
Z	13,4377	-3,40881
A1	13,458	-3,39131
A2	13,4612	-3,43356
A3	13,5018	-3,4496
A4	13,5851	-3,39428
A5	13,6509	-3,34841
A6	13,6342	-3,32662
A7	13,6788	-3,32761
A8	13,7097	-3,3113
A9	13,762	-3,30583
A10	13,7569	-3,33389

WGS84 Zone 29 N Hddd