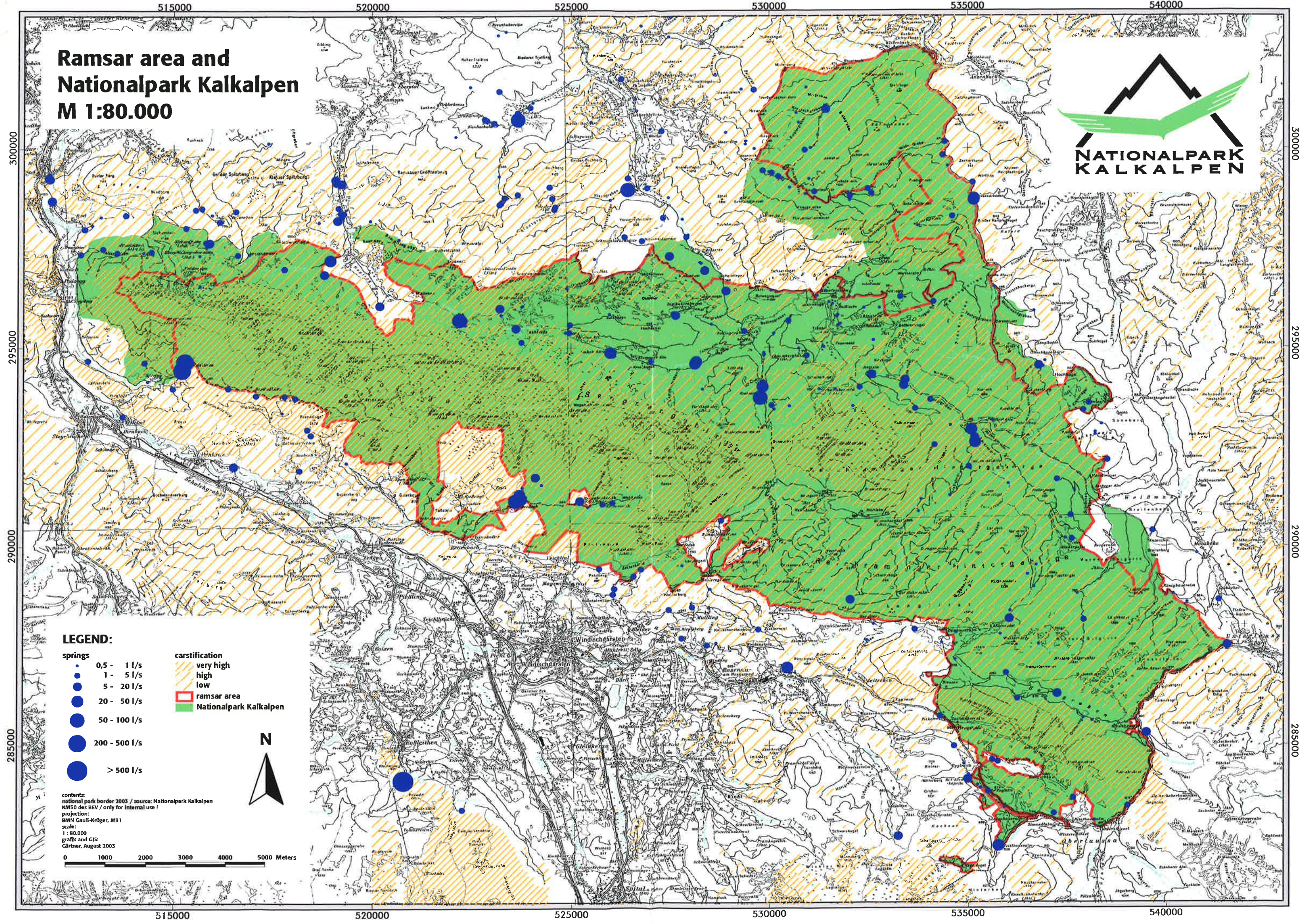


Ramsar area and Nationalpark Kalkalpen M 1:80.000



LEGEND:

- | | |
|-----------------|------------------------|
| springs | carstification |
| • 0,5 - 1 l/s | very high |
| • 1 - 5 l/s | high |
| • 5 - 20 l/s | low |
| • 20 - 50 l/s | ramsar area |
| • 50 - 100 l/s | Nationalpark Kalkalpen |
| • 100 - 200 l/s | |
| • 200 - 500 l/s | |
| • > 500 l/s | |

contents:
national park border 2003 / source: Nationalpark Kalkalpen
KM50 des BEV / only for internal use !
projection:
BMN Gauß-Krüger, M31
scale:
1 : 80.000
grafik and GIS:
Gärtner, August 2003

