

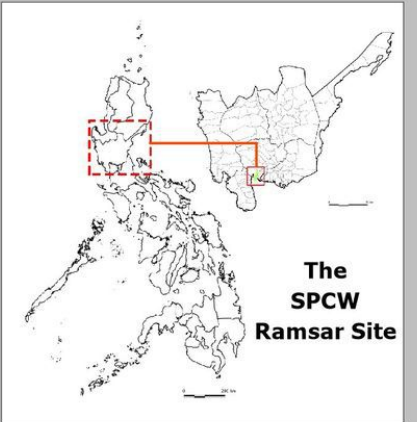
Sasmuan Pampanga Coastal Wetlands (SPCW) Ramsar Site

LOCATION

Barangays : Malusac, Sebitanan, Batang 1st, Batang 2nd and Mabuanbuan
 Municipality: Sasmuan
 Province : Pampanga
 Region : Region III (Central Luzon)
 Country : Philippines

LEGEND

- Barangay Boundary
- SBMCHSEA Critical Habitat
- SPCW Ramsar Site Boundary
- Ramsar Site Corners



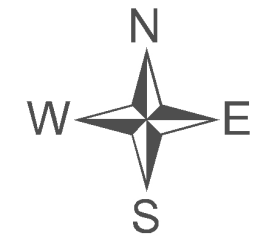
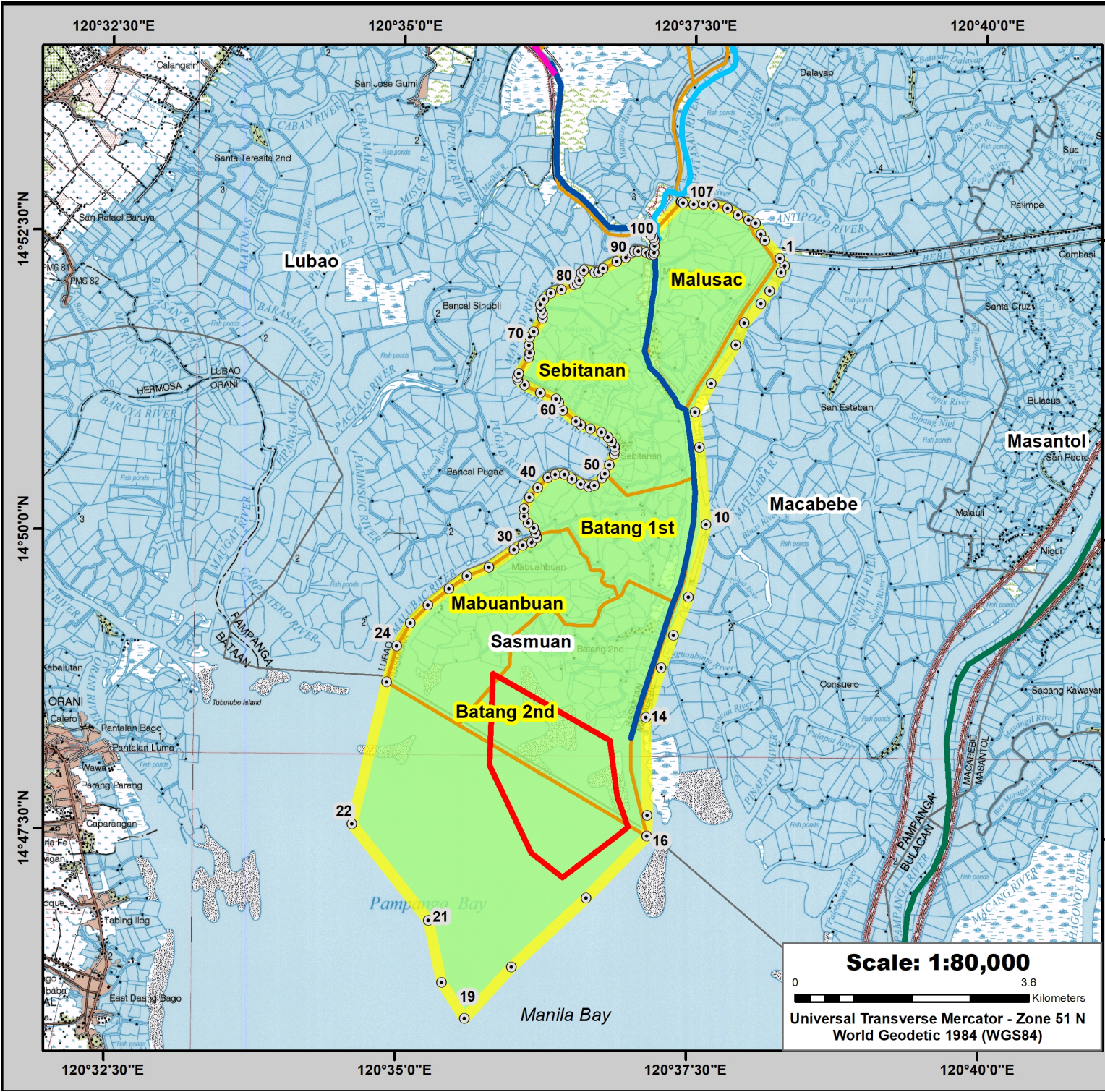
Scale : 1:100000

 Universal Transverse Mercator - Zone 51 (N)
 World Geodetic 1984 (WGS84)

Corner	Longitude	Latitude
1	120°38'17.0"	14°52'15.7"
2	120°38'15.2"	14°52'12.4"
3	120°38'09.6"	14°52'03.0"
4	120°38'04.9"	14°51'56.6"
5	120°37'56.5"	14°51'46.8"
6	120°37'52.3"	14°51'35.8"
7	120°37'39.9"	14°51'16.2"
8	120°37'31.8"	14°51'01.9"
9	120°37'34.1"	14°50'44.3"
10	120°37'37.8"	14°50'05.5"
11	120°37'29.2"	14°49'29.0"
12	120°37'21.7"	14°49'09.9"
13	120°37'15.7"	14°48'53.5"
14	120°37'08.1"	14°48'28.5"
15	120°37'09.1"	14°47'39.3"
16	120°37'09.0"	14°47'29.1"
17	120°36'38.2"	14°46'57.7"
18	120°36'00.2"	14°46'22.7"
19	120°35'36.2"	14°45'56.7"
20	120°35'24.2"	14°46'14.7"
21	120°35'17.2"	14°46'45.7"
22	120°34'37.2"	14°47'33.7"
23	120°34'54.3"	14°48'44.9"
24	120°34'59.2"	14°49'03.2"
25	120°35'06.2"	14°49'14.5"
26	120°35'15.2"	14°49'23.7"
27	120°35'25.8"	14°49'32.0"
28	120°35'35.1"	14°49'38.4"
29	120°35'46.4"	14°49'43.1"
30	120°35'59.2"	14°49'51.9"
31	120°36'03.7"	14°49'54.1"
32	120°36'08.1"	14°49'55.7"
33	120°36'11.0"	14°49'58.1"
34	120°36'10.3"	14°50'00.4"
35	120°36'09.1"	14°50'02.8"
36	120°36'06.2"	14°50'05.4"
37	120°36'04.2"	14°50'08.8"
38	120°36'04.1"	14°50'12.5"
39	120°36'06.7"	14°50'18.2"
40	120°36'11.1"	14°50'23.2"

Corner	Longitude	Latitude
41	120°36'16.2"	14°50'28.2"
42	120°36'20.0"	14°50'29.8"
43	120°36'24.9"	14°50'29.8"
44	120°36'28.7"	14°50'27.7"
45	120°36'33.2"	14°50'25.2"
46	120°36'37.2"	14°50'23.9"
47	120°36'40.3"	14°50'24.6"
48	120°36'44.1"	14°50'28.3"
49	120°36'45.6"	14°50'30.5"
50	120°36'47.8"	14°50'34.8"
51	120°36'50.2"	14°50'40.3"
52	120°36'50.6"	14°50'42.2"
53	120°36'50.3"	14°50'44.0"
54	120°36'48.8"	14°50'46.5"
55	120°36'46.9"	14°50'48.9"
56	120°36'43.6"	14°50'51.3"
57	120°36'38.0"	14°50'52.9"
58	120°36'32.8"	14°50'54.8"
59	120°36'30.4"	14°50'56.5"
60	120°36'23.4"	14°51'02.1"
61	120°36'21.3"	14°51'05.9"
62	120°36'20.0"	14°51'07.8"
63	120°36'11.9"	14°51'10.7"
64	120°36'03.6"	14°51'14.6"
65	120°36'00.3"	14°51'16.9"
66	120°36'00.0"	14°51'18.2"
67	120°36'00.7"	14°51'20.2"
68	120°36'05.7"	14°51'28.4"
69	120°36'06.1"	14°51'30.6"
70	120°36'05.7"	14°51'34.5"
71	120°36'06.1"	14°51'38.6"
72	120°36'08.3"	14°51'41.2"
73	120°36'12.6"	14°51'48.2"
74	120°36'12.6"	14°51'50.4"
75	120°36'11.7"	14°51'52.3"
76	120°36'11.4"	14°51'54.9"
77	120°36'13.2"	14°51'57.5"
78	120°36'16.7"	14°52'00.6"
79	120°36'22.3"	14°52'02.6"
80	120°36'28.7"	14°52'05.1"

Corner	Longitude	Latitude
81	120°36'30.3"	14°52'05.7"
82	120°36'31.4"	14°52'07.3"
83	120°36'32.2"	14°52'11.0"
84	120°36'33.5"	14°52'12.3"
85	120°36'39.3"	14°52'11.2"
86	120°36'41.3"	14°52'11.5"
87	120°36'43.6"	14°52'13.2"
88	120°36'50.5"	14°52'16.9"
89	120°36'55.4"	14°52'18.9"
90	120°36'58.2"	14°52'21.1"
91	120°36'59.6"	14°52'22.2"
92	120°37'01.6"	14°52'22.2"
93	120°37'05.6"	14°52'21.4"
94	120°37'08.0"	14°52'20.5"
95	120°37'09.4"	14°52'20.5"
96	120°37'09.8"	14°52'21.4"
97	120°37'10.0"	14°52'24.9"
98	120°37'10.0"	14°52'27.7"
99	120°37'09.3"	14°52'29.0"
100	120°37'07.7"	14°52'30.3"
101	120°37'23.2"	14°52'47.2"
102	120°37'23.5"	14°52'47.3"
103	120°37'24.5"	14°52'46.5"
104	120°37'29.9"	14°52'46.0"
105	120°37'34.8"	14°52'46.3"
106	120°37'40.2"	14°52'45.6"
107	120°37'47.2"	14°52'44.2"
108	120°37'52.7"	14°52'41.0"
109	120°37'58.2"	14°52'38.3"
110	120°38'01.9"	14°52'36.8"
111	120°38'04.7"	14°52'31.3"
112	120°38'06.8"	14°52'28.4"
113	120°38'14.6"	14°52'19.3"



Sasmuan Pampanga Coastal Wetlands (SPCW) Ramsar Site

LOCATION

Barangay/s: Malusac, Sebitanan,
Batang 1st, Batang 2nd,
and Mabuanbuan

Municipality: Sasmuan
Province : Pampanga
Region : Region III (Central Luzon)
Country : Philippines

- LEGEND**
- Ramsar Site Corner
 - ▭ Barangay Boundary
 - ▭ SBMCHCA Critical Habitat
 - ▭ SPCW Ramsar Site Boundary
 - ▬ Pampanga River
 - ▬ Porac Gumain River
 - ▬ Pasac River
 - ▬ Guagua River

